

**REFERENCE DWGS**

- DWG. N° 751224-SHT. 1
- ALLIS-CHALMERS DWG. N° M-536-120-406

**NOTES**

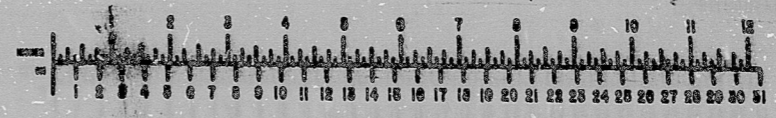
- FURNISHED BY ALLIS-CHALMERS
- LINE TO TERA-APERTURE OUTSIDE TURBINE BLDG. APPROXIMATELY 150 FEET ABOVE TURBINE OPER. FLOOR. ALSO LINE TO BE AS SHORT AS POSSIBLE
- FOR COOLING WATER, SEE DWG. N° H-F-0034
- FURNISHED BY ALLIS-CHALMERS & INSTALLED BY BROWN & ROOT IN FIELD.

TERA  
APERTURE  
CARD

INFORMATION  
THIS DOCUMENT IS  
SUBJECT TO REVISION  
WITHOUT NOTIFICATION  
TO THE USER OF THIS  
COPY

C 5-17-78 ADDED COMMENTS BY A & R R 5-17-78 COMMENTS ADDED & REVISED AS NOTED A 5-17-77 INITIAL ISSUE		PKG. 024 AREA 104 SOUTH TEXAS PROJECT PIPING DIAGRAM CONDENSER AIR REMOVAL DRAWING NO. 91-21 I-F-0031-C		CONTRACT NO. CR-0241 SCALE
PRELIMINARY <input type="checkbox"/> REVIEW <input type="checkbox"/> USE <input type="checkbox"/> CONSTRUCTION <input type="checkbox"/>				

BROWN & ROOT INC.  
MICROFILM SERVICES  
WEDNESDAY, MAY 17 1978



RIDS

8112070229

