

OPEN		CONTACT		POSITION	
SL	RL	NORM	CLOSE	OPEN	
1-1-11		X	X		
3-1-28				X	
2-1-28		X			X
4-1-49			X		

CUTLER-HAMMER TYPE E30 JYD WITH TWO K1A3 CONTACT BLOCKS

HANG INDICATING SWITCH THIS-SEE TABLE A MOMENTARY CONTACT

LIMIT SWITCH CONTACT DEVELOPMENT	ROTOR	VALVE POSITION		FUNCTION
		FULL OPEN	FULL CLOSED	
1	OPEN			BYPASS CRT
2	OPEN			SPARE
3	OPEN			IND LIGHT
4	OPEN			OPEN CRT
5	OPEN			BYPASS CRT
6	OPEN			SPARE
7	OPEN			SPARE
8	OPEN			CLOSE CRT
9	OPEN			SPARE
10	OPEN			SPARE
11	OPEN			COMPUTER
12	OPEN			SPARE
13	OPEN			SPARE
14	OPEN			SPARE
15	OPEN			IND LIGHT
16	OPEN			SPARE
17	WS	TORQUE SW OPENS ON HI CLOSING TORQUE		
18	WS	TORQUE SW OPENS ON HI OPENING TORQUE		

SOLID BAR INDICATES CONTACT CLOSED

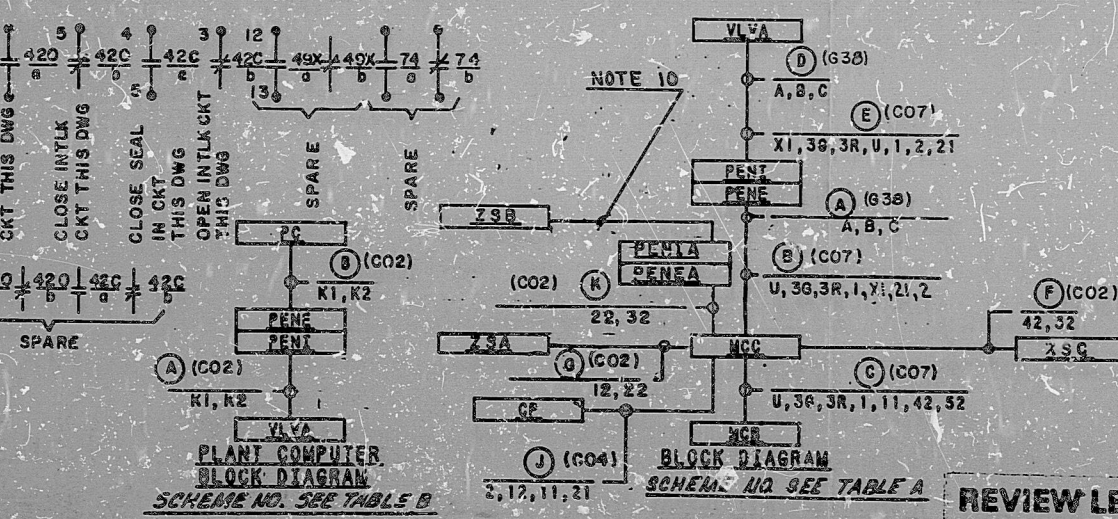
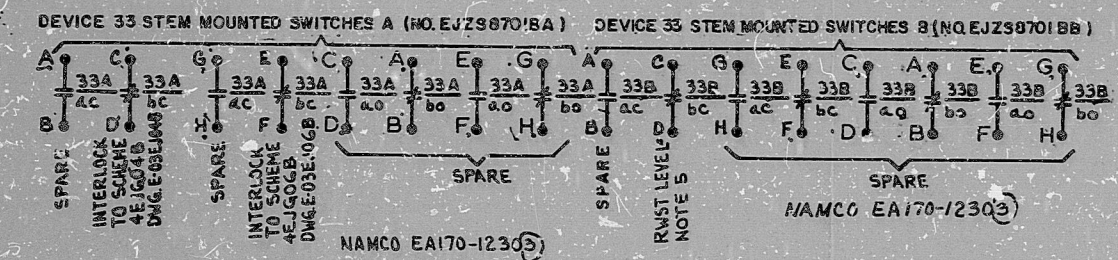
- REF. DWG: M-02EJ01
10. CABLES (2) ARE VC COMAX PETALES; SEE E-030300 3M-46 FOR TERMINATION DETAILS.
  3. CONTACT CLOSURES ON RHR PUMP 2 TO CHARGING PUMP VALVE CLOSED. SEE DWG E-03EJ04B.
  8. CONTACT CLOSURES ON SUMP TO NO.2 RHR PUMP VLV CLOSED SEE DWG E-03EJ06B.
  7. CONTACT CLOSURES ON REFUELING WATER STORAGE TANK TO RHR PUMP MOV CLOSED. SEE DWG E-03BN03.
  6. HEATER 40 WATTS, MFR. TYPE WARD LEONARD P/N 405.
  5. RWST LEVEL TEST CRT. SEE SCH. 4EJS10B, DWG E-03EJ010
  4. JUMPER TO BE INSTALLED PRIOR TO CORE LOADING.
  3. DELETED
  2. DELETED
  1. CONTACT K-734 OPENS ON HIGH-1 AND K-735 CLOSES ON HIGH-2 RCS PRESSURE. FOR DETAILS, SEE BECHTEL V.P. NO. M-767-186.

TABLE B

COMPUTER REF DWG	U-106-0115
BECHTEL V.P. NO.	
PENETRATION-PEN	ZNE277
COMPUTER PRINT	EJZ8701B
COMPUTER LOC. PC	RJ159A
VALVE LOC.-VLVA	EJHV8701B
COMPUTER SCHEME NO.	1EJRO5B

TABLE A

MCA LOC.-MCA	80018F81
PENETRATION-PENA	ZNE297
PENETRATION-PEN	ZNE277
CONTROL PANEL-CP	8R0290
SYSTEM NO. NO. 230	EJZ8701B
SYSTEM NO. NO. 230	EJZ8701B
SYSTEM NO. NO. 230	EJZ8701B
MCC LOCATION-MCC	80018DF3
MIS NUMBER	EJN18701B
MIS LOCATION-MIS	RL017
VALVE NO.-VLVA	EJHV8701B
SCHEME NO.	1EJRO5B



TI APERTURE CARD

NOTES:

5/1/73	REV'D LIMIT SW CONTACT DEVELOPMENT TO INCORP. DCP E-66				
5/1/74	REV'D LIMIT SWITCH MODEL 05 S. HP. RATINGS PER AS. 5-111 A INC. 5/1/74				
	TESTED PER CONSTRUCTION				

BECHTEL  
GAITHERSBURG, MARYLAND  
SNUPPS  
SCHEMATIC DIAGRAM  
RHR LOOP 2 INLET ISOLATION VALVE

10480 E-03EJ05B (A) 7

I certify that the image contained on this frame was made in the normal and regular course of business, on the date stated below and that it is an accurate reproduction of the document(s) submitted to Micrographics. DATE 5-16-84 OPERATOR R. Cauffman

16X

8410050349

**PDR** *Rev*

