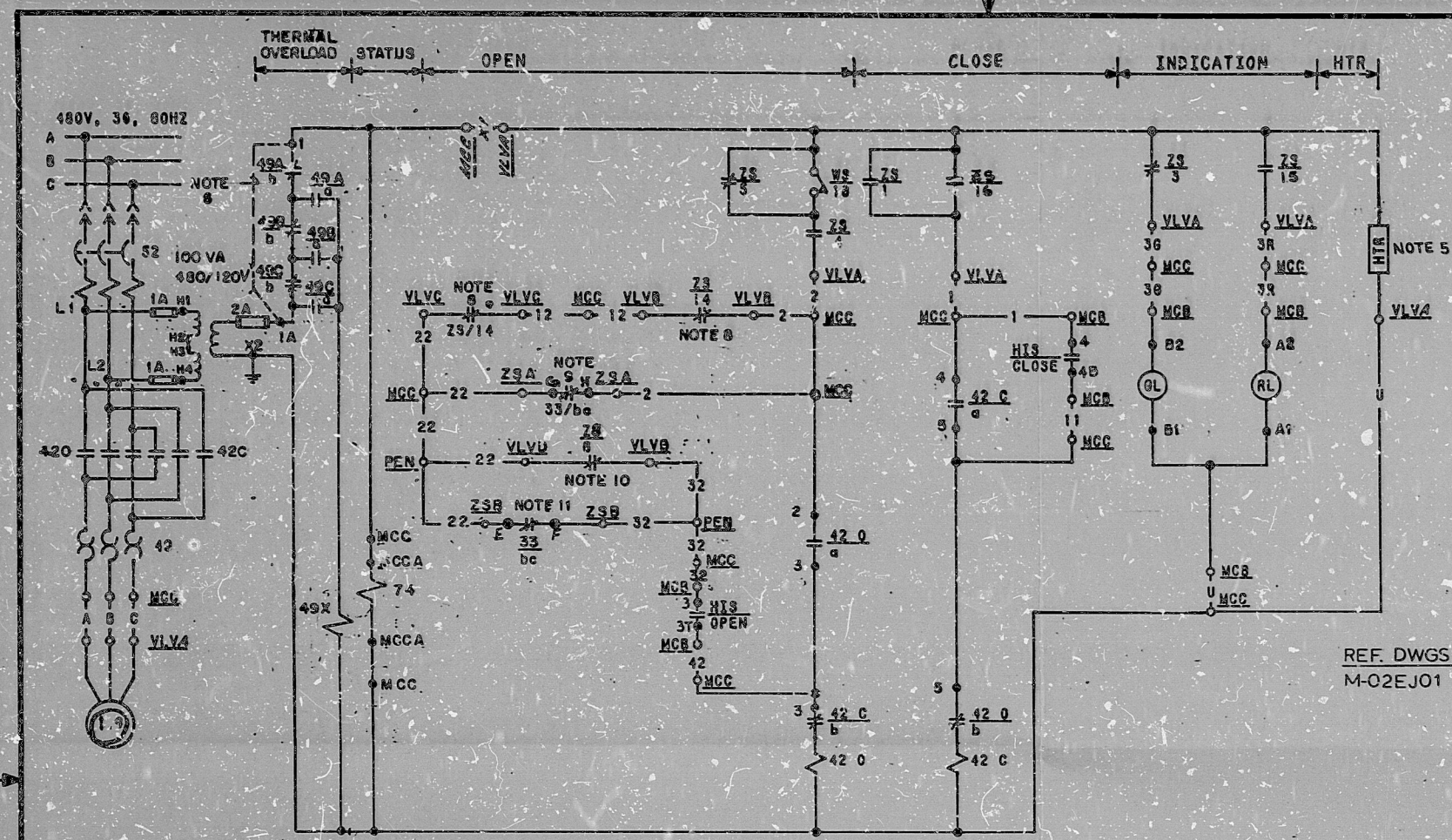


This drawing is the property of the United States Government and is loaned to the contractor for use only. It is not to be reproduced, copied, loaned, exhibited, or used except in the limited way and under the conditions permitted by written consent given by the SUPPS utilities to the borrower.



OPEN		CONTACT		POSITION	
GL	RL			NORM	CLOSE OPEN
		1-1-01T	X	X	
		3-1-03T			X
CLOSE		2-1-02B	X		X
		4-1-04B		X	

CUTLER-HAMMER TYPE E30 JY9 WITH TWO KLA3 CONTACT BLOCKS
 HAND INDICATING SWITCH HIS-SEE TABLE A
 MOMENTARY CONTACT

LIMIT SWITCH CONTACT DEVELOPMENT				
ROTOR	CONT.	VALVE POSITION		FUNCTION
		FULL OPEN	FULL CLOSED	
OPEN	1			BYPASS CKT
	2			SPARE
	3			IND LIGHT
	4			OPEN CKT
CLOSE	5			BYPASS CKT
	6			NOTE 2
	7			SPARE
	8			NOT USED
ZS	9			SPARE
	10			SPARE
	11			COMPUTER
	12			NOTE 7
	13			NOTE 3
	14			NOTE 4
	15			IND LIGHT
	16			CLOSE CKT
WS	17	TORQUE SW	OPENS ON HI CLOSING TORQUE	
	18	TORQUE SW	OPENS ON HI OPENING TORQUE	

SOLID BAR INDICATES CONTACT CLOSED

- SEPARATE STEM MOUNTED SWITCHES ARE USED TO MAINTAIN PHYSICAL SEPARATION OF THE CIRCUIT WHICH INTERLOCKS VALVES OF ONE SEPARATION GROUP WITH VALVES OF A DIFFERENT SEPARATION GROUP. CABLES TO THESE SWITCHES SHALL BE ROUTED SEPARATELY FROM OTHER CABLES TO THE VALVES
- INTERLOCK TO SCH. 1EMG03B, SEE DWG. E-03EM03.
- INTERLOCK TO SCH. 1EMG03A, SEE DWG. E-03EM03.
- HEATER 30 WATTS, MANUFACTURER TYPE WARD LEONARD PA1905 INTERLOCK TO SCH. 1EJG05A, SEE DWG. E-03EJ05A
- CONTACT CLOSING ON RHR LOOP 1 INLET ISO VLV CLOSED. SEE DWG. E-03BB12A.
- CONTACT CLOSING ON RHR LOOP 1 INLET ISO VLV CLOSED. SEE DWG. E-03EJ05A.
- CONTACT CLOSING ON SIS PUMP MINIFLOW ISO VLV CLOSED. SEE SCH. 1BNK7A, DWG. E-03BN07.
- CONTACT CLOSING ON SIS MINIFLOW ISO VLV CLOSED SEE DWG. E-03EM03
- TO STATUS PANEL. SEE DWG. E-03SA05.
- JUMPED TO BE INSTALLED PRIOR TO CORE LOADING

TABLE B

COMPUTER ASP. DWG. NO.	J-106-0115
COMPUTER POINT	EJ28804A
COMPUTER LOCATION-PC	RJ399A
VALVE NO.-VLVA	EJHV8804A
COMPUTER SCHEME NO.	1EJR04A

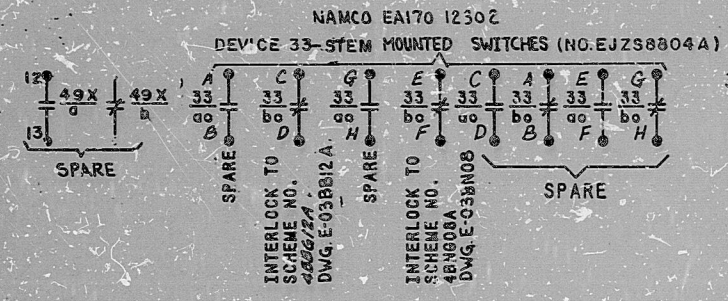
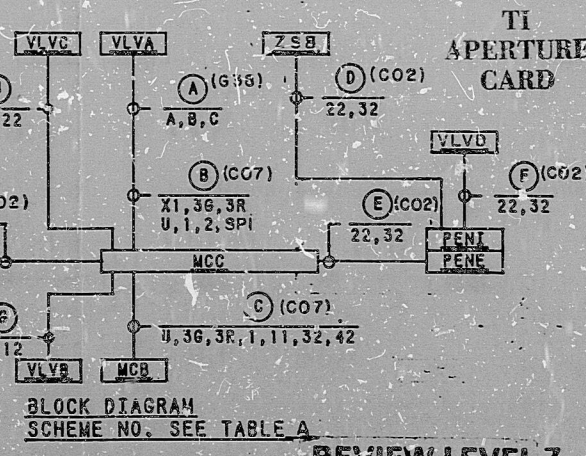
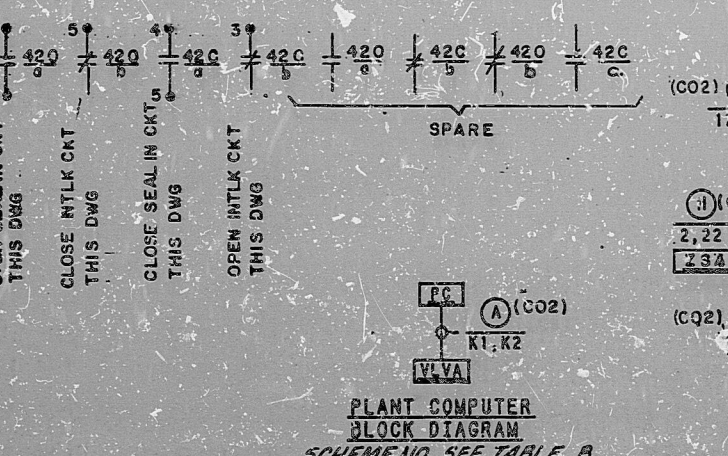


TABLE A

MCCA LDC-MCCA	NG03CFF1
SYSTEM SW E NO	88238702AA
PENETRATION-PC	ZME277
VALVE NO.-VLVD	EJHV8731A
STEM MTD SW A NO.	88238813
VALVE NO.-VLVC	EMHV8814A
VALVE NO.-VLVB	EMHV8814B
MCC LOCATION-MCC	NG03CMP4
HIS NUMBER	EJH138804A
HIS LOCATION-MCB	RL017
VALVE NO.-VLVA	EJHV8804A
SCHEME NO.	1EJG04A



REVIEW LEVEL 3

NO.	DATE	REVISIONS	BY	CHKD	APPD
1		REV'D ZSA CONTACTS FROM LIMIT SW CONTACT PANEL			
2		ADD DEVICE 33-STEM MOUNTED SWITCHES			
3		REV'D M.P. RATING TO INCLUDE SFA-1-EJ-45 AND DCN E-03EJ04A-3-COL			
4		ZSA FOR COST			

SCALE: DESIGNED CAP, DRAWN CAD, CHECKED ECH, APPROVED ECH
BECHTEL
 SAITHEBSBURG, MARYLAND
SIUPPS
 SCHEMATIC DIAGRAM
 RHR PUMP 1 TO CHARGING PUMP VALVE

JOB NO	BECHTEL NUMBER INC.	REV
10488	E-03EJ04A (3)	6

I certify that the image contained on this frame was made in the proper and regular course of business, on the date stated below and that it is

8410050344

EDR RIDS

