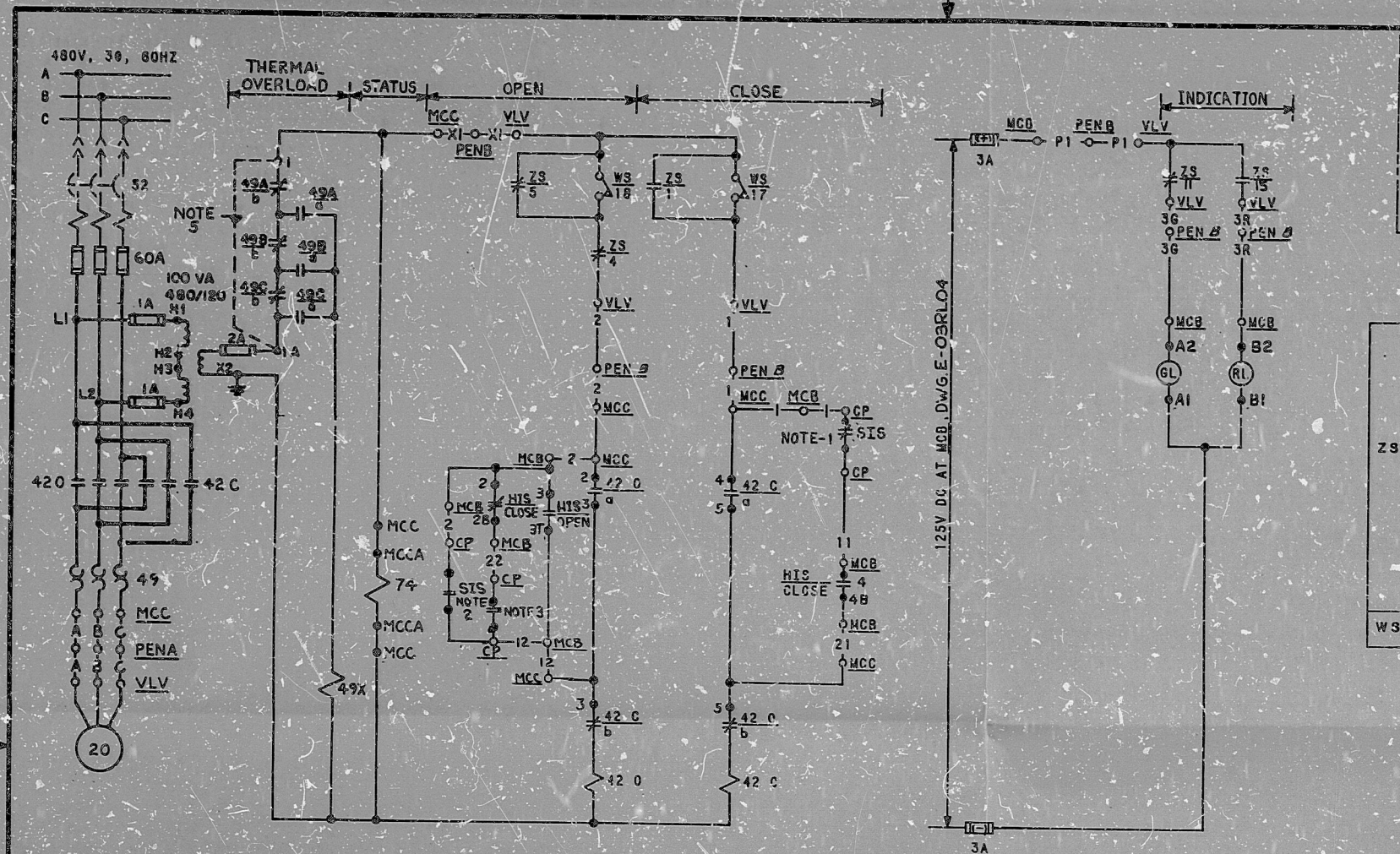


This drawing and the design it contains is the property of the utilities which are participating in the SNUPPS Project. It is loaned to the borrower's express agreement that it will not be reproduced, copied, loaned, exhibited, or used except in the limited way and private use permitted by written consent given by the SNUPPS utilities to the borrower.



OPEN		POSITION	
GL	RL	NORM	CLOSE OPEN
1-1-1T	X	X	
3-1-3T			X
2-1-2B	X		X
4-1-4B		X	

CUTLER-HAMMER  
TYPE E30 J115  
WITH TWC KLA3  
CONTACT BLOCKS

HAND INDICATING SWITCH  
HIS- SEE TABLE A  
OPEN SW-MOMENTARY  
CLOSE SW-MAINTAINED

LIMIT SWITCH CONTACT DEVELOPMENT			
ROTOR	VALVE POSITION		FUNCTION
	FULL OPEN	FULL CLOSED	
OPEN	1		BYPASS CKT
	2		SPARE
	3		SPARE
	4		OPEN CKT
CLOSE	5		BYPASS CKT
	6		SPARE
	7		NOT USED
	8		NOT USED
INT. 1	9		NOTE B
	10		SPARE
	11		GRN LIGHT
	12		NOTE B
INT. 2	13		SPARE
	14		SPARE
	15		RED LIGHT
	16		SPARE
W3	17	TORQUE SW OPENS ON HI CLOSING TORQUE	
	18	TORQUE SW OPENS ON HI OPENING TORQUE	

SOLID BAR INDICATES CONTACT CLOSED

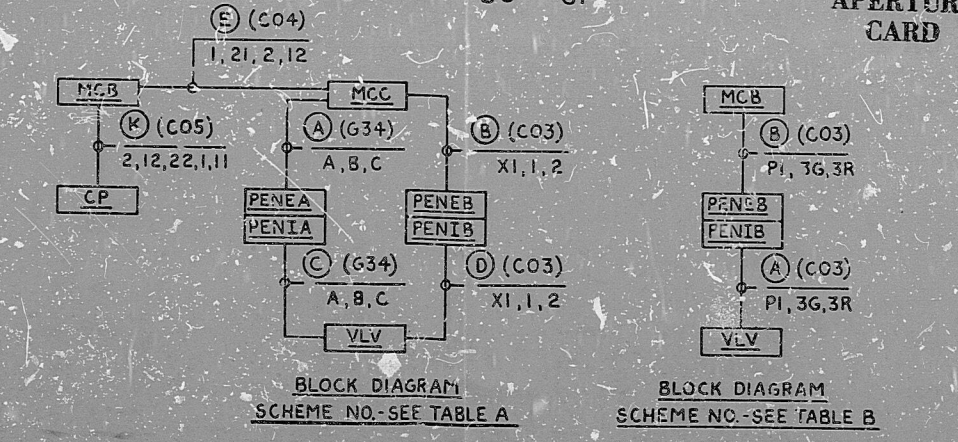
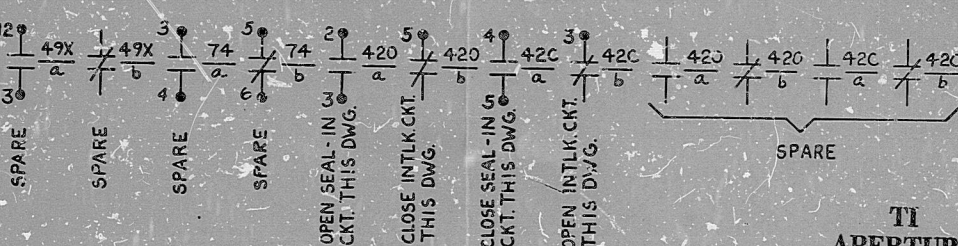
- CONTACT OPENS ON SAFETY INJECTION SIGNAL RELAY A CONTACT NO. SEE TABLE A FOR DETAILS, SEE WESTINGHOUSE DWG. BECTEL V.P. NO. M-767-178
- CONTACT CLOSURES ON SAFETY INJECTION SIGNAL RELAY B CONTACT NO. SEE TABLE A FOR DETAILS, SEE WESTINGHOUSE DWG. BECTEL V.P. NO. M-767-178
- CONTACT CLOSURES AT RCS PRESSURE ABOVE THE SI UNBLOCK PRESSURE PRESSURIZER RELIEF BLOCK RELAY B CONTACT NO. SEE TABLE A FOR DETAILS, SEE WESTINGHOUSE DWG. BECTEL V.P. NO. M-767-184
- FOR STEM MOUNTED SWITCHES SEE DWG E-03EP02B
- JUMPER TO BE INSTALLED PRIOR TO CORE-LOADING
- SEE TABLE A FOR INTERLOCK
- TO STATUS PANEL SEE DWG. E-03SA03.
- BREAKER SHOULD BE PADLOCKED DURING NORMAL OPERATION.

TABLE B

PENETRATION BNO	PEN B	ZNE27B	ZNE27B	ZSE234	ZSE234
HIS NUMBER	EPHIS8808A	EPHIS8808C	EPHIS8808B	EPHIS8808D	EPHIS8808D
HIS LOC. - MCC	RL01B	RL01B	RL01B	RL01B	RL01B
VALVE NO. - VLV	EPHV8808A	EPHV8808C	EPHV8808B	EPHV8808D	EPHV8808D
SCHEME NO.	1EPK02E	1EPK02F	4EPK02G	4EPK02H	4EPK02H

TABLE A

S.4 PROT. RELAY (NOTE 1)	K608	K603	K608	K603
E CONTACT NO.	4-10	9-10	9-10	9-10
S.5 PROT. RELAY (NOTE 2) <th>K603</th> <th>K603</th> <th>K608</th> <th>K603</th>	K603	K603	K608	K603
E CONTACT NO. <td>7-8</td> <td>7-8</td> <td>7-8</td> <td>7-8</td>	7-8	7-8	7-8	7-8
MCC LOC. - MCCA	NG01BFRI	NG01BFRI	NG02BFRI	NG02BFRI
PRESS. RELIEF BLOCK RELAY & CONTACT NO.	K621	K621	K621	K621
PENETRATION - PEN B	ZNE27B	ZNE27B	ZSE234	ZSE234
INTLK SCHEME NO. DWG. NO.	1EPK02C E-03EP02	1EPK02D E-03EP02	4EPK02G E-03EP02	4EPK02H E-03EP02
CONTROL PANEL - CP	S8029C	S8029C	S8032C	S8032C
PENETRATION - PEN A	ZNE289	ZNE289	ZSE21B	ZSE21B
HIS NUMBER	EPHIS8808A	EPHIS8808C	EPHIS8808B	EPHIS8808D
MCC LOCATION - MCC	NG01BGF3	NG01BGF2	NG02BGF3	NG02BGF2
HIS LOCATION - MCC	RL01B	RL01B	RL01B	RL01B
VALVE NO. - VLV	EPHV8808A	EPHV8808C	EPHV8808B	EPHV8808D
SCHEME NO.	1EPG02A	1EPG02B	4EPG02C	4EPG02D



REVISIONS

NO.	DATE	REVISIONS	BY	CHK	DESIGN	ENG.	PROJ.	CHIEF
1		REVISED POSITION SWITCH FUNCTION						
2		REV. POS. SWITCH FUNCTION 774 RELAY CONTACT DEV.						
3		ISSUED FOR CONSTRUCTION						

SCALE: DESIGNED CAP. DRAWN CAD. CHIEF ENGR.

**BECTEL**  
BETHESDA, MARYLAND

**SNUPPS**

**SCHEMATIC DIAGRAM**  
ACCUMULATOR ISOLATION VALVES

DATE	BY	CHK	DESIGN	ENG.	PROJ.	CHIEF
10488						

JOB NO. 10488  
BECTEL DRAWING NO. E-03EP02A (Q)  
DATE 11/21/78

REVIEW LEVEL 3

I certify that the image contained on this frame was made in the normal and regular course of business, on the date stated below and that it is an accurate reproduction of the document(s) submitted to Xeroxgraphics.  
DATE 11/21/78 OPERATOR: [signature]



8410050316

PDR RIDS

