

This drawing and the design it covers is the property of the utilities which are participating in the SNUPPS Project. It is loaned to the borrower's express agreement that it will not be reproduced, copied, loaned, exhibited, or used except in the limited way and private use permitted by written consent given by the utility to the borrower.

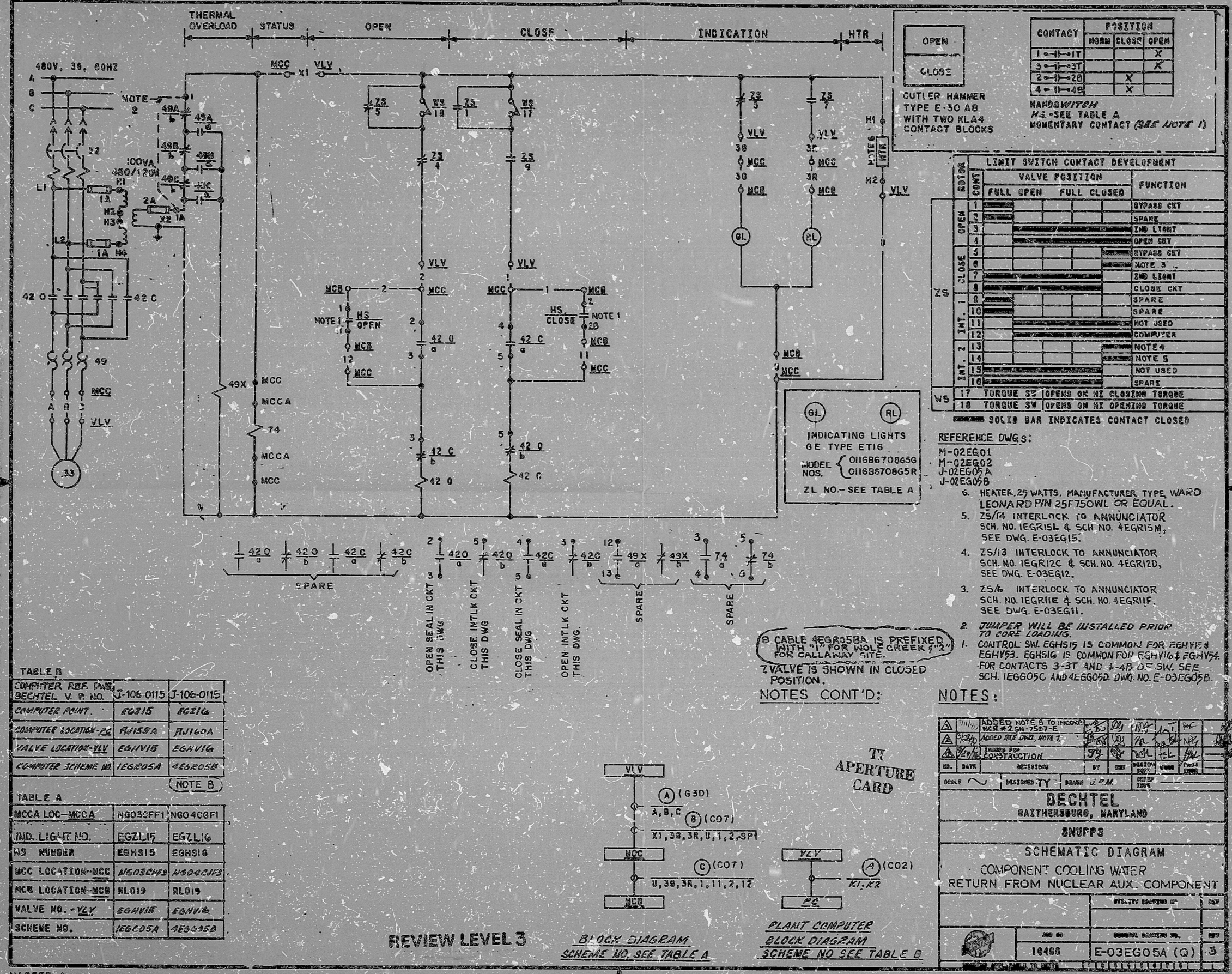


TABLE B

| | | |
|----------------------|------------|------------|
| COMPUTER REF. DWG. | J-106-0115 | J-106-0115 |
| BECHTEL V. P. NO. | EG215 | EG216 |
| COMPUTER POINT | RJ159A | RJ160A |
| COMPUTER LOCATION-PC | EGHV15 | EGHV16 |
| VALVE LOCATION-VLV | EGHV15 | EGHV16 |
| COMPUTER SCHEME NO. | 1EG05A | 4EG05B |

TABLE A

| | | |
|------------------|---------|----------|
| MCCA LOC-MCCA | H903CF1 | NG04CGF1 |
| IND. LIGHT NO. | EGZL15 | EGZL16 |
| HS NUMBER | EGHS15 | EGHS16 |
| MCC LOCATION-MCC | NG03CF3 | NG04CF3 |
| MCB LOCATION-MCB | RL019 | RL019 |
| VALVE NO.-VLV | EGHV15 | EGHV16 |
| SCHEME NO. | 1EG05A | 4EG05B |

| CONTACT | POSITION | |
|---------|----------|------------|
| | NORM | CLOSE OPEN |
| 1-11-1T | | X |
| 3-11-3T | | X |
| 2-11-2B | X | |
| 4-11-4B | X | |

CUTLER HAMMER
TYPE E-30 AB
WITH TWO KLA4
CONTACT BLOCKS

HANDSWITCH
H2-SEE TABLE A
MOMENTARY CONTACT (SEE NOTE 1)

LIMIT SWITCH CONTACT DEVELOPMENT

| ROTOR | CONT | VALVE POSITION | | FUNCTION |
|--------|------|----------------|-------------|--------------------------------------|
| | | FULL OPEN | FULL CLOSED | |
| OPEN | 1 | | | BYPASS CKT |
| | 2 | | | SPARE |
| | 3 | | | IND LIGHT |
| | 4 | | | OPEN CKT |
| CLOSE | 5 | | | BYPASS CKT |
| | 6 | | | NOTE 3 |
| | 7 | | | IND LIGHT |
| | 8 | | | CLOSE CKT |
| ZS | 9 | | | SPARE |
| | 10 | | | SPARE |
| | 11 | | | NOT USED |
| | 12 | | | COMPUTER |
| INT. 2 | 13 | | | NOTE 4 |
| | 14 | | | NOTE 5 |
| | 15 | | | NOT USED |
| | 16 | | | SPARE |
| WS | 17 | | | TORQUE SW OPENS ON HI CLOSING TORQUE |
| | 18 | | | TORQUE SW OPENS ON HI OPENING TORQUE |

SOLID BAR INDICATES CONTACT CLOSED

- REFERENCE DWGS:**
- M-02EG01
 - M-02EG02
 - J-02EG05A
 - J-02EG05B
- HEATER 25 WATTS, MANUFACTURER TYPE WARD LEONARD P/N 25F750WL OR EQUAL.
 - ZS/4 INTERLOCK TO ANNUNCIATOR SCH. NO. 1EGRI5L & SCH. NO. 4EGRI5M, SEE DWG. E-03EG15.
 - ZS/13 INTERLOCK TO ANNUNCIATOR SCH. NO. 1EGRI2C & SCH. NO. 4EGRI2D, SEE DWG. E-03EG12.
 - ZS/6 INTERLOCK TO ANNUNCIATOR SCH. NO. 1EGRI1E & SCH. NO. 4EGRI1F, SEE DWG. E-03EG11.
 - JUMPER WILL BE INSTALLED PRIOR TO CORE LOADING.
 - CONTROL SW EGH515 IS COMMON FOR EGHV15 & EGHV16. EGH516 IS COMMON FOR EGHV16 & EGHV17. FOR CONTACTS 3-3T AND 4-4B O.F. SW. SEE SCH. 1EGG05C AND 4EGG05D. DWG. NO. E-03EG05B.

3 CABLE 4EGR05BA IS PREFIXED WITH "1" FOR WOLE CREEK "2" FOR CALLAWAY SITE.
Z VALVE IS SHOWN IN CLOSED POSITION.

NOTES CONT'D:

NOTES:

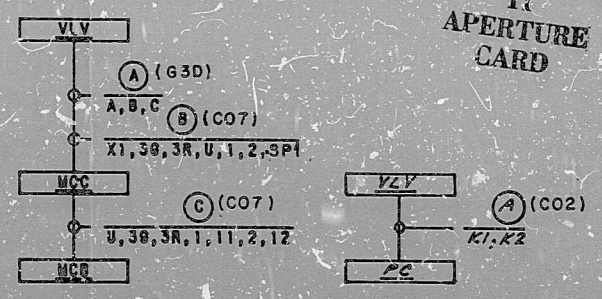
| | | | |
|-----------------------------------------------|----------|--------|------|
| ADDED NOTE 5 TO INCONSISTENT WITH DWG. NOTE 2 | BY | CHK | DATE |
| ISSUED FOR CONSTRUCTION | BY | CHK | DATE |
| DESIGNED BY | REVISION | J.P.M. | DATE |

BECHTEL
GAITHERSBURG, MARYLAND

SNUPPS

SCHEMATIC DIAGRAM
COMPONENT COOLING WATER
RETURN FROM NUCLEAR AUX. COMPONENT

| | | | | | |
|---------|-------|---------------------|---------------|-----|---|
| DWG NO. | 10408 | BECHTEL DRAWING NO. | E-03EG05A (G) | REV | 3 |
|---------|-------|---------------------|---------------|-----|---|



REVIEW LEVEL 3

BLOCK DIAGRAM
SCHEME NO. SEE TABLE A

PLANT COMPUTER
BLOCK DIAGRAM
SCHEME NO. SEE TABLE B

MASTER 1

I certify that the usage contained on this frame was made in the normal and regular course of business, on the date stated below and that it is an accurate reproduction of the document(s) submitted to Micrographics.
DATE 7-17-83 OPERATOR [Signature] SUPERVISOR [Signature]

16X

17"

8410050256

EDR RIDs

