

- NOTES:
- ORIFICE REQUIRED TO PREVENT EXCESSIVE PUMP RUNOUT OR RESTRICT MINIFLOW.
 - THE SUMP REPRESENTATION IS NOT INTENDED TO ILLUSTRATE A STRUCTURAL DESIGN.
 - SEE W SYSTEMS STANDARD DESIGN CRITERIA L12 LAYOUT GUIDELINES.
 - PROVIDE 3/8 INCH ID FLOW RESTRICTOR FOR TRANSITION FROM SAFETY CLASS 1 TO SAFETY CLASS 2.
 - LOCATE CONT. SUMP ISOLATION VALVE ABOVE ELEV. OF RWST ISOLATION VALVE.
 - SEE W SYSTEMS STANDARD DESIGN CRITERIA L14 CONTAINMENT ISOLATION.
 - LOCATE TV CONN. AS CLOSE AS POSSIBLE TO ISOLATION VALVE. TEST CONNECTIONS ATTACHED TO BOT. TOP OF PIPING TO FACILITATE DRAINING OF LINES.
 - THIS DWG SUPERSEDES DWG. F-15015-A 10 MATING FLANGE FOR VALVE MUST BE 300#, GRADE F316 TO MEET W. PIPE SPEC. G-107854, REV. 2 REQUIREMENTS.
- REFERENCES:
- FOR PIPING INSTRUMENT SYMBOLS SEE DRAWINGS: G-P0001 & G-P0002.
 - WEST INHOUSE DRAWING NO. 120717 SUB 1 SHEET 2 OF 4.

TERA APERTURE CARD INFORMATION
THIS DOCUMENT IS SUBJECT TO REVISION WITHOUT NOTIFICATION TO THE USER OF THIS COPY

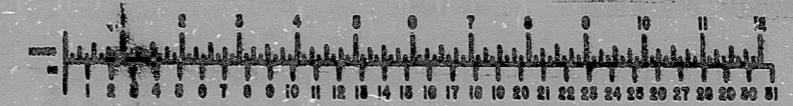
| NO. | DATE | DESCRIPTION | BY | CHKD | APP'D | REV | DATE | DESCRIPTION |
|------------|------|---|-----|------|-------|-----|------|-------------|
| F-5167 | | CIRCLED AREAS INDICATE LATEST REVISION | RCC | | | | | |
| F-5167 | | CIRCLED AREAS INDICATE LATEST REVISION | RCC | | | | | |
| D-12-78 | | ALL CIRCLED AREAS INDICATE LATEST REVISIONS | GRS | | | | | |
| C-10-77 | | GENERAL REVISION | JH | | | | | |
| B-5-1-76 | | ALL CIRCLED AREAS INDICATE LATEST REVISIONS | JH | | | | | |
| A-10-18-74 | | ADDED F-15015A REVIEW COMMENTS | JAH | | | | | |

BROWN & ROOT INC.
MICROFILM SERVICES
FRIDAY, MAY 10 1978

Brown & Root Inc.
Engineering Contractors
HOUSTON, TEXAS

| | | | |
|-----------------------------|--|--------------------------|-----------|
| SOUTH TEXAS PROJECT | | PKG. NO. 001 | SHEET 100 |
| PIPING DIAGRAM | | CONTRACT NO. | SCALE |
| RHR/SAFETY INJECTION SYSTEM | | CR-0241 | NONE |
| SHEET NO. 2 OF 4 | | DRAWING NO. 5112 (15115) | |
| | | I-F-5014-F | |

INFORMATION PRELIMINARY REVIEW USE CONSTRUCTION



8.5"

11"

8.5"

11"

17"

8.5"

11"

8.5"

11"

17"

RIDS

8112070093

