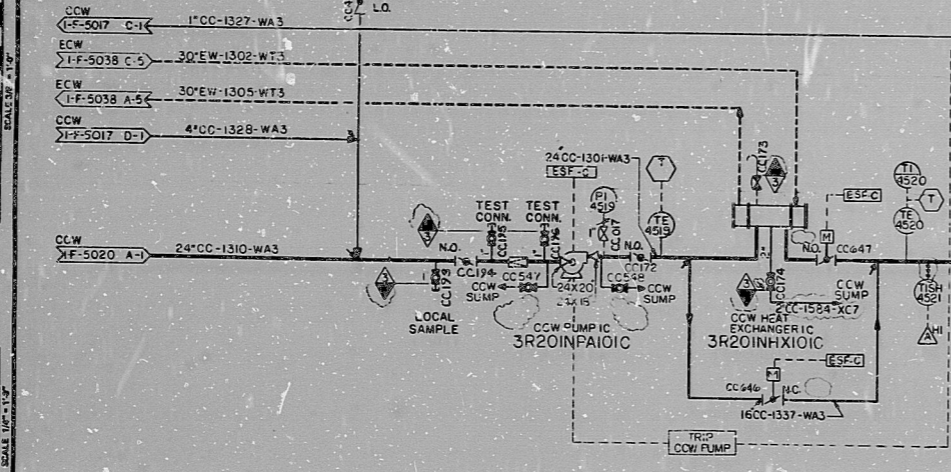


NOTES:
 1. LOCATE ALL T.V.'S & T.C.'S ON THE BOTTOM OF THE CONNECTING PIPE
 2. LOCATE VALVES AS CLOSE TO PRC'S AS POSSIBLE
 3. LOCATE VALVES AS CLOSE TO PENETRATIONS AS POSSIBLE
 4. PIPING, VALVES, AND COMPONENTS IDENTIFIED AS SAFETY CLASS 1, 2 OR 3 ARE SEISMICALLY DESIGNED. CLASS 7, 8 OR 9 ITEMS ARE NON-SEISMICALLY DESIGNED.
 5. HYDRO VENTS AND DRAINS TO BE LOCATED ON FAB ISO'S ONLY.

INFORMATION
 THIS DOCUMENT IS
 SUBJECT TO REVISION
 WITHOUT NOTIFICATION
 TO THE USER OF THIS
 COPY

TERA
 APERTURE
 CARD



REV.	DATE	DESCRIPTION	BY	CHKD.	APP'D.
G 11/27/77		CIRCLED AREAS INDICATES LATEST REVISION			
F 11/27/77		CIRCLED AREAS INDICATES LATEST REVISION			
E 6/4/77		CIRCLED AREAS INDICATES LATEST REVISION			
D 12/27/77		ALL CIRCLED AREAS INDICATE LATEST REVISION			
C 12/27/77		ALL CIRCLED AREAS INDICATE LATEST REVISION			
B 12/27/77		GENERAL REVISION			
A 12/27/77		GENERAL REVISION			

Brown & Root, Inc.
 Engineers - Constructors
 HOUSTON, TEXAS

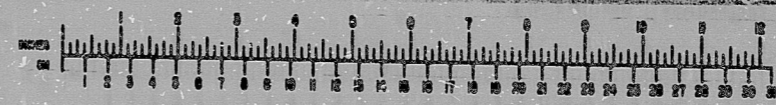
SOUTH TEXAS PROJECT
 PIPING DIAGRAM
 COMPONENT COOLING WATER SYSTEM
 SHEET 3 OF 5

CONTRACT NO. CR-0241
 SCALE NONE
 DRAWING NO. SR-20
 I-F-5019-11

THIS DRAWING SUPERSEDES DRAWINGS F-15018-E & F-15019-E

INFORMATION PRELIMINARY REVIEW USE CONSTRUCTION

BROWN & ROOT INC.
 MICROFILM SERVICES
 THURSDAY, MAY 11 1978



RIDS

8/12070083

