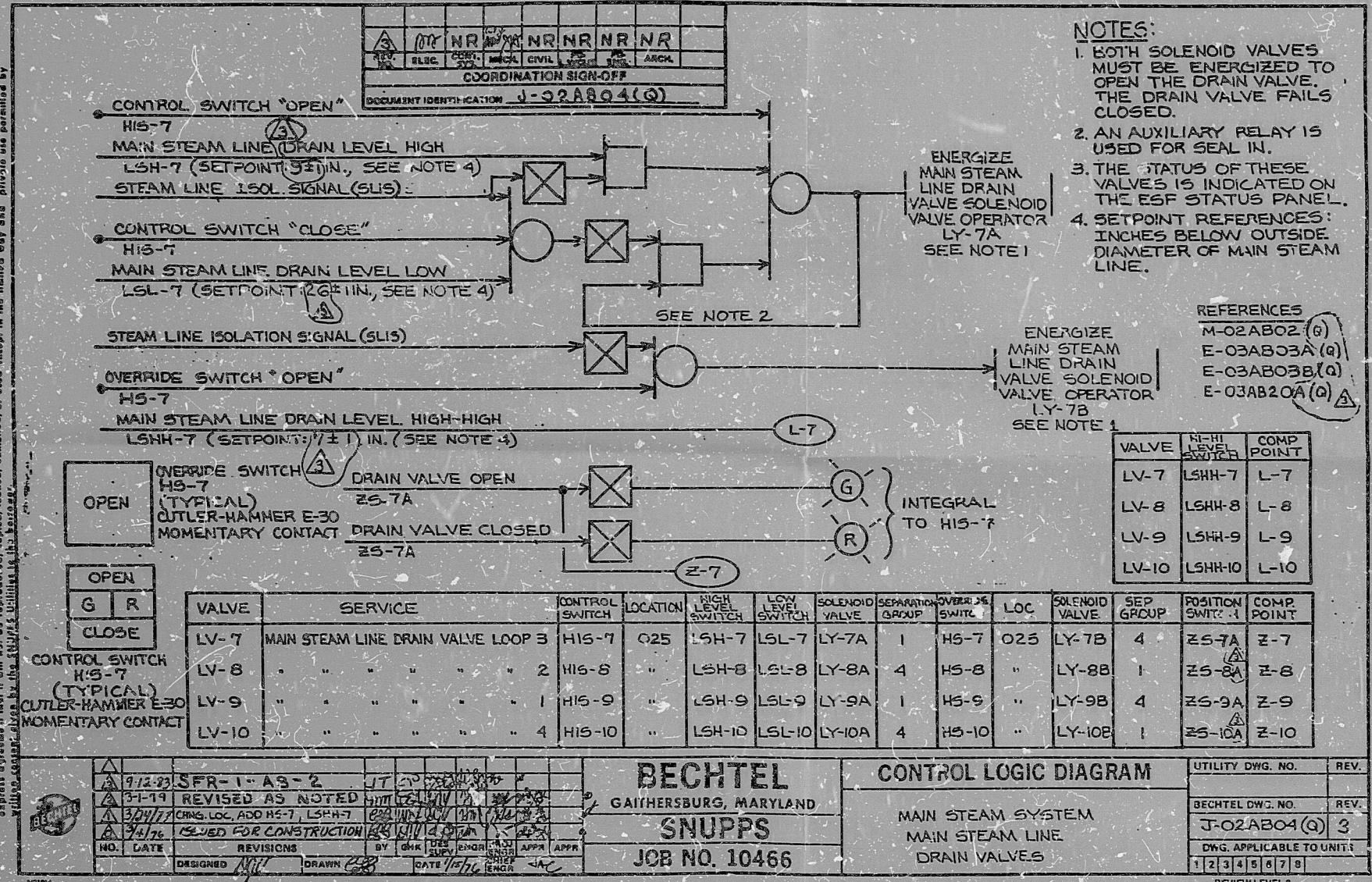


14

11

50

This drawing and the design it covers is the property of the Utilities which are participating in the SNUPPS Project. It is loaned to the borrower's express agreement that it will not be used for any other project, established or made, except in the limited way and purpose use permitted by the borrower.



NOTES:

- BOTH SOLENOID VALVES MUST BE ENERGIZED TO OPEN THE DRAIN VALVE. THE DRAIN VALVE FAILS CLOSED.
- AN AUXILIARY RELAY IS USED FOR SEAL IN.
- THE STATUS OF THESE VALVES IS INDICATED ON THE ESF STATUS PANEL.
- SETPOINT REFERENCES: INCHES BELOW OUTSIDE DIAMETER OF MAIN STEAM LINE.

REFERENCES

- M-02AB02 (R)
- E-03AB03A (Q)
- E-03AB03B (Q)
- E-03AB20A (Q)

TI APERTURE CARD

9-12-73 SFR-1-AS-2 3-1-79 REVISED AS NOTED 3-29-77 CHNG LOC ADD HS-7, LSH-7 3-4-76 ISUED FOR CONSTRUCTION		BECHTEL GAINERSBURG, MARYLAND SNUPPS JOB NO. 10466		CONTROL LOGIC DIAGRAM MAIN STEAM SYSTEM MAIN STEAM LINE DRAIN VALVES		UTILITY DWG. NO. REV. BECHTEL DWG. NO. REV. J-02AB04(Q) 3 DWG. APPLICABLE TO UNIT: 1 2 3 4 5 6 7 8 REVIEW LEVEL 3	
--	--	---	--	---	--	--	--

I certify that the image contained on this frame was made in the normal and regular course of business, on the date stated below and that it is an accurate reproduction of the document(s) submitted to Micrographics.
 DATE 9/14/83 OPERATOR *mmk/Barand* SUPERVISOR *ccornel/MSB*

16X

8

11

17

8410050712

PDR RIDS

