

INFORMATION
 THIS DOCUMENT IS
 SUBJECT TO REVISION
 WITHOUT NOTIFICATION
 TO THE USER OF THIS
 COPY

NOTES:
 1. SEE # SYSTEM STANDARD
 DESIGN CRITERIA 1.12,
 LAYOUT GUIDELINES.

REFERENCES:
 1. FOR PIPING & INSTRUMENT SYMBOLS
 SEE DRAWINGS O-F-0001 & O-F-0002
 2. WESTINGHOUSE DRAWING NO.
 1207E20 SUB1 SHT. 2 OF 2.

**TERA
 APERTURE
 CARD**

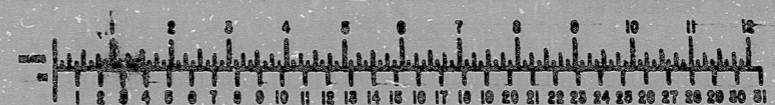
NO.	DATE	DESCRIPTION	BY	CHK	APP	REV	DATE	DESCRIPTION	BY	CHK	APP	REV	DATE	DESCRIPTION
G	8/15/78	ISSUED FOR REVIEW	J.P.											
F	8/15/78	ISSUED FOR REVIEW	J.P.											
E	8/15/78	ISSUED FOR REVIEW	J.P.											
D	8/15/78	ISSUED FOR REVIEW	J.P.											
C	8/15/78	ISSUED FOR REVIEW	J.P.											
B	8/15/78	ISSUED FOR REVIEW	J.P.											
A	8/15/78	ISSUED FOR REVIEW	J.P.											

Brown & Root, Inc.
 Piping Diagram
 SFP/COOLING & CLEANUP SYSTEM
 SHEET 2 OF 2

SOUTH TEXAS PROJECT
 CONTRACT NO. CR-0241
 SCALE: NTS
 DRAWING NO. SR-21
 1-F-5029-G

PKG. NO. 050 DIFF. 101

BROWN & ROOT INC.
MICROFILM SERVICES
 FRIDAY, MAY 19 1978



INFORMATION PRELIMINARY REVIEW USE CONSTRUCTION

RIDS

811207 0045

