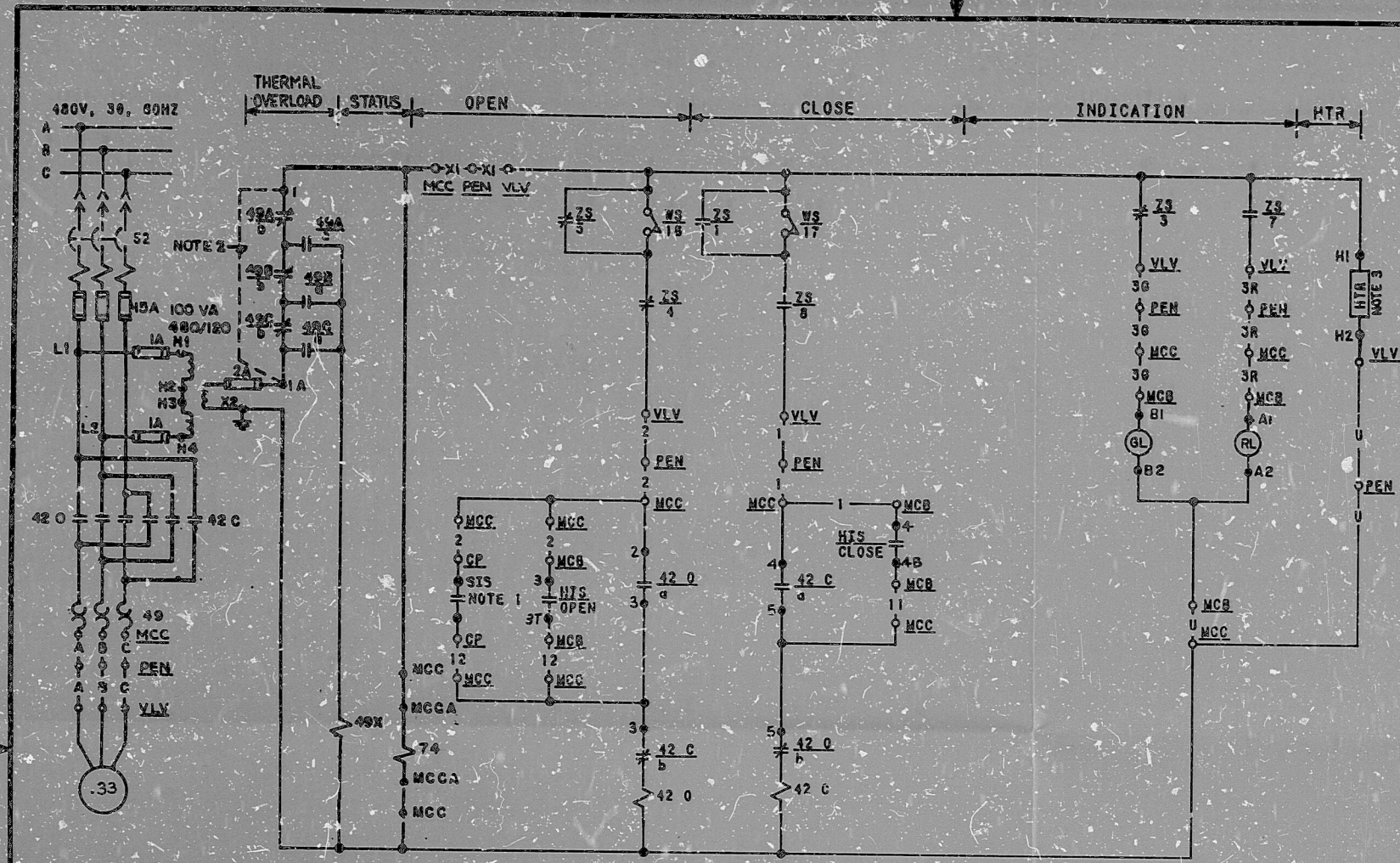


This drawing and the design it covers is the property of the utilities which are participating in the SNUPPS Project. It is loaned on the borrower's express agreement that it will not be reproduced, copied, loaned, exhibited, or used except in the limited way and private use permitted by written consent given by the SNUPPS Utilities to the borrower.



CUTLER-HAMMER TYPE E30 JY9 WITH TWO KLAS CONTACT BLOCKS		CONTACT POSITION	
GL	RL	NORM CLOSE	OPEN
1	1-1T	X	X
3	1-3T		X
2	1-2B	X	
4	1-4B		X

HAND INDICATING SWITCH HIS-SEE TABLE A MOMENTARY CONTACT

ROTOR	LIMIT SWITCH CONTACT DEVELOPMENT		FUNCTION
	FULL OPEN	FULL CLOSED	
1			BYPASS CKT
2			COMPUTER
3			IND LIGHT
4			OPEN CKT
5			BYPASS CKT
6			SPARE
7			IND LIGHT
8			CLOSE CKT
9			NOTE 4
10			SPARE
11			NOT USED
12			SPARE
13			SPARE
14			SPARE
15			NOT USED
16			SPARE
17	TORQUE SW OPENS ON HI CLOSING TORQUE		
18	TORQUE SW OPENS ON HI OPENING TORQUE		

SOLID BAR INDICATES CONTACT CLOSED

REFERENCE DWGS:
 M-02EFO2
 M-02EFO3

- TO STATUS PANEL. SEE DWG E-03SA03
- HEATER, 25WATTS, MANUFACTURER TYPE WARD LEONARD P/N 25F750ML OR EQUAL.
- JUMPER TO BE INSTALLED PRIOR TO CORE LOADING
- CONTACT CLOSING ON SAFETY INJECTION SIGNAL. RELAY & CONTACT NO. SEE TABLE, FOR DETAILS, SEE WESTINGHOUSE DWG, BECTEL V.P. NO. M-767-778

NOTES:

REVISED NOTE 3					
ISSUED FOR CONSTRUCTION					

SCALE: ~ DRAWN BY: BECTEL C1D

BECTEL
 BAITHERSBURG, MARYLAND

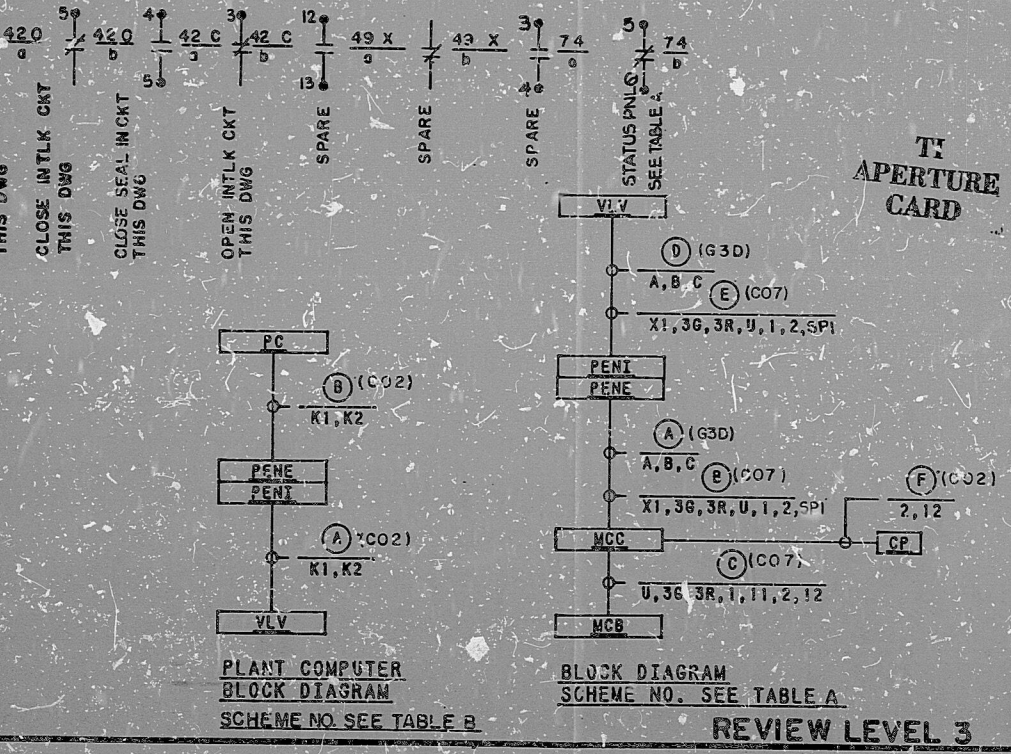
SNUPPS

SCHEMATIC DIAGRAM
 ESW TO/FROM CONTAINMENT AIR COOLERS ISOLATION VALVES

DATE	BY	CHKD	APP'D
10488	E-03EF09 (3)		

TABLE B				
COMPUTER REF. DWG. BECTEL V.P. NO.	J-106-0115	J-106-0115	J-106-0115	J-106-0115
PENETRATION NO.-PEN	ZNE27B	ZSE234	ZNE27B	ZSE234
COMPUTER POINT	EF233	EF234	EF245	EF248
COMPUTER LOCATION-PC	RJ159A	RJ160A	RJ159A	RJ160A
VALVE NO.-VLV	EFHV33	EFHV34	EFHV45	EFHV48
COMPUTER SCHEME NO.	1EF909A	4EF909B	1EF909C	4EF909D

TABLE A				
74/b STATUS PNL. DWG	E-03SA07	E-03SA09	E-03SA07	E-03SA09
MCCA LOG - MCCA	NG01BF1	NG02BF1	NG01BF1	NG02BF1
S.S. PROT RELAY & CONTACT NO. (SIS)	K810 1T-1B	K810 1T-1B	K810 9-10	K810 9-10
HIS NUMBER	EFHIS33	EFHIS34	EFHIS43	EFHIS48
PENETRATION NO.-PEN	ZNE27B	ZSE234	ZNE27B	ZSE234
CONT PNL LOCATION-CP	SB029C	SB032C	SB029C	SB032C
MCC LOCATION-MCC	NG01BF2	NG02BF3	NG01BF2	NG02BF2
HIS LOCATION-MCB	RL019	RL019	RL019	RL019
VALVE NO.-VLV	EFHV33	EFHV34	EFHV45	EFHV48
SCHEME NO.	1EF909A	4EF909B	1EF909C	4EF909D



PLANT COMPUTER BLOCK DIAGRAM SCHEME NO. SEE TABLE B

BLOCK DIAGRAM SCHEME NO. SEE TABLE A

REVIEW LEVEL 3

I certify that the image contained on this frame was made in the normal and regular course of business, on the date stated below and that it is an accurate reproduction of the document(s) submitted to Micrographics.
 DATE 5/1/82 OPERATOR *Paul Canard* SUPERVISOR *[Signature]*

16X

8410050200

PDR RIDS

