

UNCONTROLLED DOCUMENT
FOR REFERENCE ONLY

NOTES:

1. INSTALL MANUAL AIR VENT VALVES ON ALL HIGH POINTS OF THE CHILLED WATER SYSTEM.
2. INSTALL MANUAL DRAIN VALVES ON ALL LOW POINTS OF THE CHILLED WATER SYSTEM.
3. TE-18780A1, TE-18780A2, TM-18780A1 AND HS-18780A1 CORRESPOND TO INDICATOR POINT, TE-18780A2, TM-18780A1, TM-18780A2 AND HS-18780A1 TO POINT C. ETC. TEMPERATURE ELEMENTS, TRANSDUCERS AND SWITCHES ARE SIMILARLY ARRANGED.
4. SUPPLY AND RETURN CONNECTIONS OF DRYWELL UNIT COOLERS REQUIRES LAY JOINT FLANGES.
5. THE THREADED CAPS ON DRAIN PANS SHALL BE SEAL WELDED.
6. REFER TO NUCLEAR BOILER FUNCTIONAL CONTROL DIAGRAM M-187-017, 018, 019 & 020. CE NO. 104219 FOR SOURCE OF CONTAINMENT ISOLATION SIGNAL.
7. LOOP - LOSS OF OFF-SITE POWER.

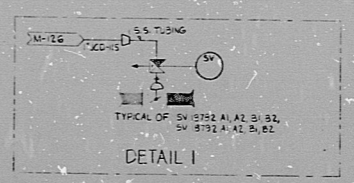
POOR ORIGINAL

PRC
APERTURE
CARD

LAST VALVE
NUMBER
I-87-101
I-87-214

REFERENCE DWGS.

BECKETL NO.	PL. NO.
M-115	E-106218
M-103	E-106248
M-100	E-106208
M-187-41	E-106292
V-418	E-106291
V-187	E-106292



REV.	REVISION	DATE	BY	CHKD.
1	REVISED PER CHANGE LIST # 002 42	5/5
2	REVISED PER CHANGE LIST # 002 42	5/5
3	REVISED PER SPR 1962	5/5
4	REVISED PER SPR 1962	5/5
5	REVISED PER SPR 1962	5/5
6	REVISED PER SPR 1962	5/5
7	REVISED PER SPR 1962	5/5
8	REVISED PER SPR 1962	5/5
9	REVISED PER SPR 1962	5/5
10	REVISED PER SPR 1962	5/5
11	REVISED PER SPR 1962	5/5
12	REVISED PER SPR 1962	5/5
13	REVISED PER SPR 1962	5/5
14	REVISED PER SPR 1962	5/5
15	REVISED PER SPR 1962	5/5
16	REVISED PER SPR 1962	5/5
17	REVISED PER SPR 1962	5/5
18	REVISED PER SPR 1962	5/5
19	REVISED PER SPR 1962	5/5
20	REVISED PER SPR 1962	5/5
21	REVISED PER SPR 1962	5/5
22	REVISED PER SPR 1962	5/5
23	REVISED PER SPR 1962	5/5
24	REVISED PER SPR 1962	5/5
25	REVISED PER SPR 1962	5/5
26	REVISED PER SPR 1962	5/5
27	REVISED PER SPR 1962	5/5
28	REVISED PER SPR 1962	5/5
29	REVISED PER SPR 1962	5/5
30	REVISED PER SPR 1962	5/5
31	REVISED PER SPR 1962	5/5
32	REVISED PER SPR 1962	5/5
33	REVISED PER SPR 1962	5/5
34	REVISED PER SPR 1962	5/5
35	REVISED PER SPR 1962	5/5
36	REVISED PER SPR 1962	5/5
37	REVISED PER SPR 1962	5/5
38	REVISED PER SPR 1962	5/5
39	REVISED PER SPR 1962	5/5
40	REVISED PER SPR 1962	5/5
41	REVISED PER SPR 1962	5/5
42	REVISED PER SPR 1962	5/5
43	REVISED PER SPR 1962	5/5
44	REVISED PER SPR 1962	5/5
45	REVISED PER SPR 1962	5/5
46	REVISED PER SPR 1962	5/5
47	REVISED PER SPR 1962	5/5
48	REVISED PER SPR 1962	5/5
49	REVISED PER SPR 1962	5/5
50	REVISED PER SPR 1962	5/5
51	REVISED PER SPR 1962	5/5
52	REVISED PER SPR 1962	5/5
53	REVISED PER SPR 1962	5/5
54	REVISED PER SPR 1962	5/5
55	REVISED PER SPR 1962	5/5
56	REVISED PER SPR 1962	5/5
57	REVISED PER SPR 1962	5/5
58	REVISED PER SPR 1962	5/5
59	REVISED PER SPR 1962	5/5
60	REVISED PER SPR 1962	5/5
61	REVISED PER SPR 1962	5/5
62	REVISED PER SPR 1962	5/5
63	REVISED PER SPR 1962	5/5
64	REVISED PER SPR 1962	5/5
65	REVISED PER SPR 1962	5/5
66	REVISED PER SPR 1962	5/5
67	REVISED PER SPR 1962	5/5
68	REVISED PER SPR 1962	5/5
69	REVISED PER SPR 1962	5/5
70	REVISED PER SPR 1962	5/5
71	REVISED PER SPR 1962	5/5
72	REVISED PER SPR 1962	5/5
73	REVISED PER SPR 1962	5/5
74	REVISED PER SPR 1962	5/5
75	REVISED PER SPR 1962	5/5
76	REVISED PER SPR 1962	5/5
77	REVISED PER SPR 1962	5/5
78	REVISED PER SPR 1962	5/5
79	REVISED PER SPR 1962	5/5
80	REVISED PER SPR 1962	5/5
81	REVISED PER SPR 1962	5/5
82	REVISED PER SPR 1962	5/5
83	REVISED PER SPR 1962	5/5
84	REVISED PER SPR 1962	5/5
85	REVISED PER SPR 1962	5/5
86	REVISED PER SPR 1962	5/5
87	REVISED PER SPR 1962	5/5
88	REVISED PER SPR 1962	5/5
89	REVISED PER SPR 1962	5/5
90	REVISED PER SPR 1962	5/5
91	REVISED PER SPR 1962	5/5
92	REVISED PER SPR 1962	5/5
93	REVISED PER SPR 1962	5/5
94	REVISED PER SPR 1962	5/5
95	REVISED PER SPR 1962	5/5
96	REVISED PER SPR 1962	5/5
97	REVISED PER SPR 1962	5/5
98	REVISED PER SPR 1962	5/5
99	REVISED PER SPR 1962	5/5
100	REVISED PER SPR 1962	5/5

PENNSYLVANIA POWER & LIGHT COMPANY
 ALLIANCE WITH WESTINGHOUSE
 REACTOR BLDG. CHILLED WATER
 BECKETL - SAN FRANCISCO
 P & I D
 REACTOR BLDG. CHILLED WATER
 SHEET NO. M-187 SHEET 2 OF 2
 E-106292-SM-2

46 71

46 11

46 58

8.5"

11"

17"

30 X 11

Identify that the microfilm image contained on this microfilm was made in the normal and regular course of business. This is your full and complete representation and warranty for and on behalf of original document generated by the Federal Special Agent in Charge.

DANNY
 MRG-1

RIDS

8305260080

