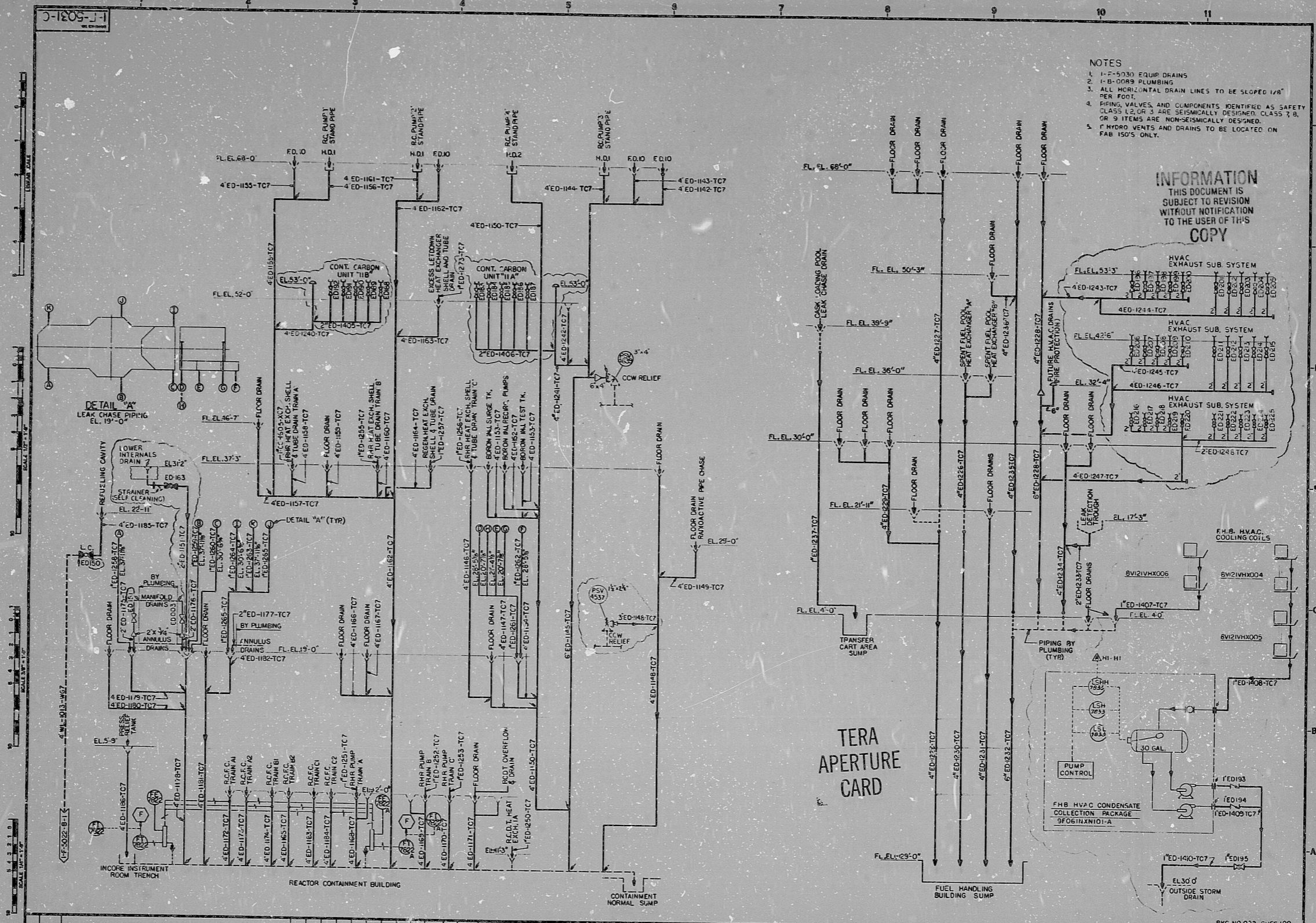
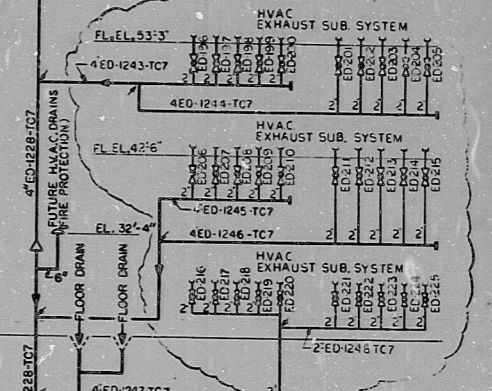


1-F-5031-C



- NOTES
- 1-2-5030 EQUIP DRAINS
 - 2-1-0-0089 PLUMBING
 - 3- ALL HORIZONTAL DRAIN LINES TO BE SLOPED 1/8" PER FOOT.
 - 4- FRINGE VALVES AND COMPONENTS IDENTIFIED AS SAFETY CLASS 1, 2, OR 3 ARE SEISMICALLY DESIGNED CLASS 2, 3, OR 3 ITEMS ARE NON-SEISMICALLY DESIGNED.
 - 5- F WIND VENTS AND DRAINS TO BE LOCATED ON FAB 150'S ONLY.

INFORMATION
THIS DOCUMENT IS
SUBJECT TO REVISION
WITHOUT NOTIFICATION
TO THE USER OF THIS
COPY



C 10-250 REVISED AS CIRCLED
B 10-250 REVISED AS CIRCLED
A 10-17-74 INITIAL ISSUE

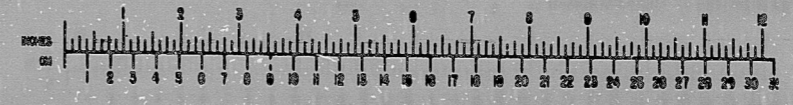
NO.	DATE	DESCRIPTION	BY	CHKD.
1	10-17-74	INITIAL ISSUE		
2	10-25-74	REVISED AS CIRCLED		
3	10-25-74	REVISED AS CIRCLED		

Brown & Root, Inc.
Engineers & Constructors
HOUSTON, TEXAS

SOUTH TEXAS PROJECT		PKG. NO. 022 SUPP. 100
CONTRACT NO.	CR-0241	SCALE
PIPING DIAGRAM		SCALE
FUEL HANDLING BUILDING		SCALE
AND REACTOR CONTAINMENT BUILDING		SCALE
GRAVITY DRAINS		SCALE
DRAWING NO. 70006		SCALE
1-F-5031-C		SCALE

INFORMATION: PRELIMINARY REVIEW USE CONSTRUCTION

BROWN & ROOT INC.
MICROFILM SERV.



THURSDAY, JAN. 24 1980

8.5"

11"

17"

RIDS

8/12070039

