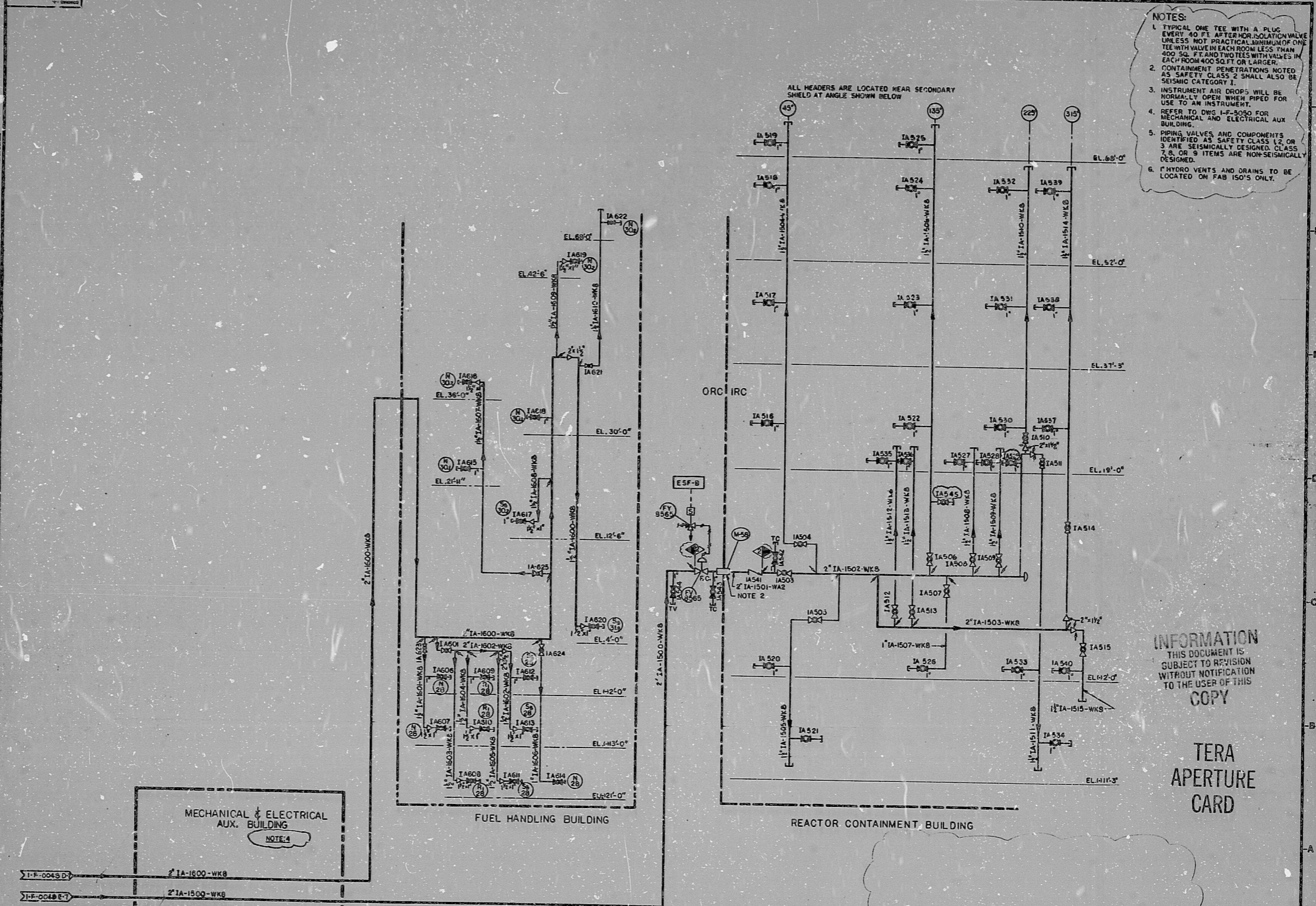
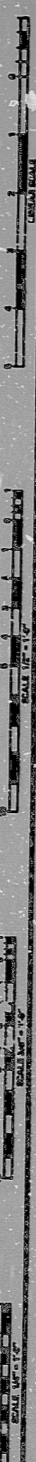


I-F-5040-D



- NOTES:
1. TYPICAL ONE TEE WITH A PLUG EVERY 40 FT. AFTER ISOLATION VALVE UNLESS NOT PRACTICAL. MINIMUM OF ONE TEE WITH VALVE IN EACH ROOM LESS THAN 400 SQ. FT. AND TWO TEES WITH VALVES IN EACH ROOM 400 SQ. FT. OR LARGER.
 2. CONTAINMENT PENETRATIONS NOTED AS SAFETY CLASS 2 SHALL ALSO BE SEISMIC CATEGORY 1.
 3. INSTRUMENT AIR DROPS WILL BE NORMALLY OPEN WHEN PIPED FOR USE TO AN INSTRUMENT.
 4. REFER TO DWG I-F-5050 FOR MECHANICAL AND ELECTRICAL AUX BUILDING.
 5. DRIVING VALVES AND COMPONENTS IDENTIFIED AS SAFETY CLASS 1, 2, OR 3 ARE SEISMICALLY DESIGNED. CLASS 2, 3, OR 3 ITEMS ARE NON-SEISMICALLY DESIGNED.
 6. F-WINDO VENTS AND DRAINS TO BE LOCATED ON FAB 150'S ONLY.

INFORMATION
THIS DOCUMENT IS
SUBJECT TO REVISION
WITHOUT NOTIFICATION
TO THE USER OF THIS
COPY

TERA
APERTURE
CARD

NO.	DATE	BY	CHKD.	DESCRIPTION
1				
2				
3				
4				
5				
6				
7				
8				
9				
10				

Brown & Root, Inc.
Houston, Texas

SOUTH TEXAS PROJECT
PIPING DIAGRAM
INSTRUMENT AIR
SHEET 1 OF 3

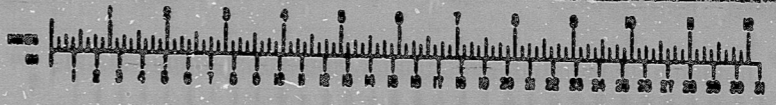
CONTRACT NO. CR-0241
SCALE: NTS
DRAWING NO. 5011
I-F-5040-D

PGC NO. 052 BUFE 102

INFORMATION PRELIMINARY REVIEW USE CONSTRUCTION

BROWN & ROOT INC.
MICROFILM SERVICES

WEDNESDAY, DECEMBER 10, 1975



RIDS

812040663

