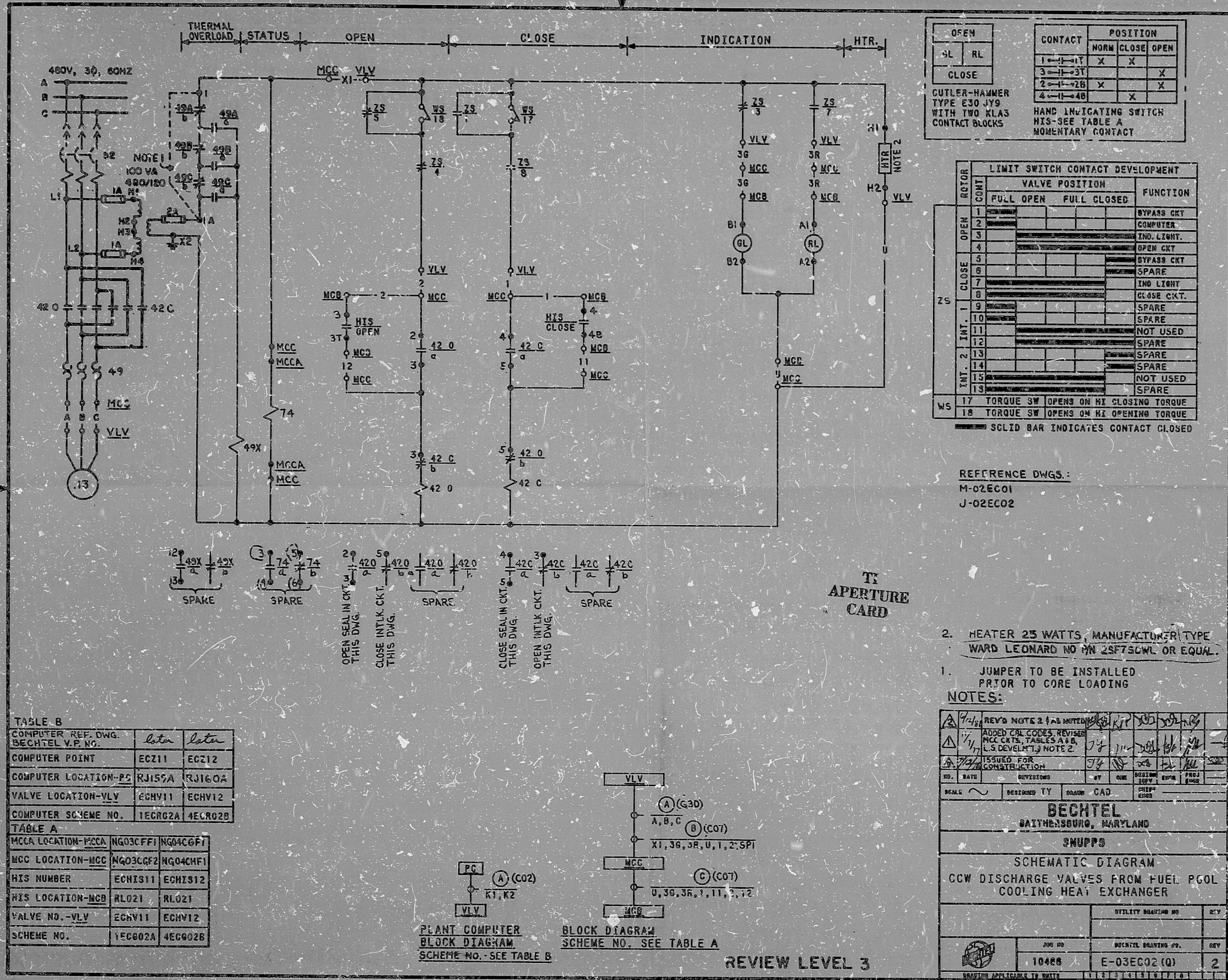


This drawing and the design it covers is the property of the Utilit. loc which are participating in the SNUPPS Project. It is loaned on the borrower's express agreement that it will not be reproduced, copied, loaned, exhibited, or used except in the limited way and private use permitted by written consent given by the SNUPPS Utilit. loc to the borrower.



OPEN		CONTACT		POSITION		
9L	RL	1	2	NORM	CLOSE	OPEN
		1-1-3T	X	X		
		3-1-3T	X			X
		2-1-2B	X			X
		4-1-4B	X			X

CUTLER-HAMMER TYPE E30 JY9 WITH TWO KLAS CONTACT BLOCKS  
HAND INDICATING SWITCH HIS-SEE TABLE A  
MOMENTARY CONTACT

LIMIT SWITCH CONTACT DEVELOPMENT				
ROTOR	CONTACT	VALVE POSITION		FUNCTION
		FULL OPEN	FULL CLOSED	
OPEN	1			BYPASS CKT
	2			COMPUTER
	3			IND. LIGHT
	4			OPEN CKT
CLOSE	5			BYPASS CKT
	6			SPARE
	7			IND LIGHT
	8			CLOSE CKT.
ZS	9			SPARE
	10			SPARE
	11			NOT USED
	12			SPARE
	13			SPARE
	14			SPARE
	15			NOT USED
WS	17			TORQUE SW OPENS ON HI CLOSING TORQUE
	18			TORQUE SW OPENS ON HI OPENING TORQUE

SLID BAR INDICATES CONTACT CLOSED

REFERENCE DWGS.:  
M-02EC01  
J-02EC02

TI  
APERTURE  
CARD

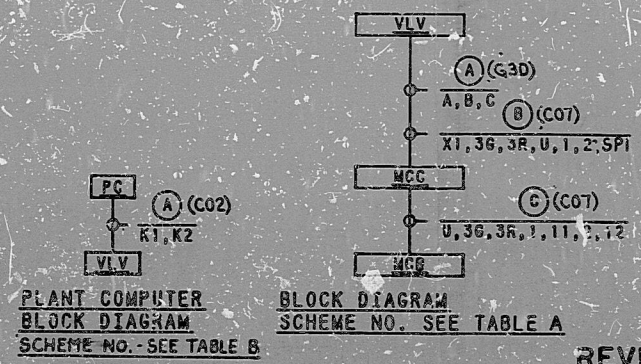
- HEATER 25 WATTS, MANUFACTURER TYPE WARD LEONARD NO FN 2SF75CWL OR EQUAL.
  - JUMPER TO BE INSTALLED PRIOR TO CORE LOADING
- NOTES:

TABLE B

COMPUTER REF. DWG. BECHTEL V.P. NO.	later	later
COMPUTER POINT	EC211	EC212
COMPUTER LOCATION-PS	RJ155A	RJ160A
VALVE LOCATION-VLV	ECHV11	ECHV12
COMPUTER SCHEME NO.	1EC802A	4EC802B

TABLE A

MCCA LOCATION-MCCA	NG03CFF1	NG04C6F1
MCC LOCATION-MCC	NG03CGF2	NG04CHF1
HIS NUMBER	ECHIS11	ECHIS12
HIS LOCATION-MCB	RL021	RL021
VALVE NO.-VLV	ECHV11	ECHV12
SCHEME NO.	1EC802A	4EC802B



PLANT COMPUTER BLOCK DIAGRAM  
SCHEME NO. - SEE TABLE B

BLOCK DIAGRAM  
SCHEME NO. SEE TABLE A

REVIEW LEVEL 3

NO.	DATE	REVISIONS	BY	CHKD	APPR	FRG
<p>BECHTEL SAITHERSBURG, MARYLAND</p> <p>SNUPPS</p> <p>SCHEMATIC DIAGRAM CCW DISCHARGE VALVES FROM FUEL POOL COOLING HEAT EXCHANGER</p>						
SCALE		DESIGNED BY	DRAWN	CAD	CHKD	APPR
JOB NO.		BECHTEL DRAWING NO.		REV		
10466		E-03EC02 (Q)		2		

I certify that the image contained on this frame was made in the normal and regular course of business, on the date stated below and that it is an accurate reproduction of the document(s) submitted to Micrographics.  
DATE: 10/15/80 OPERATOR: J. M. B. SUPERVISOR: [Signature]



8410050150

**E.D.R. AIDS**

