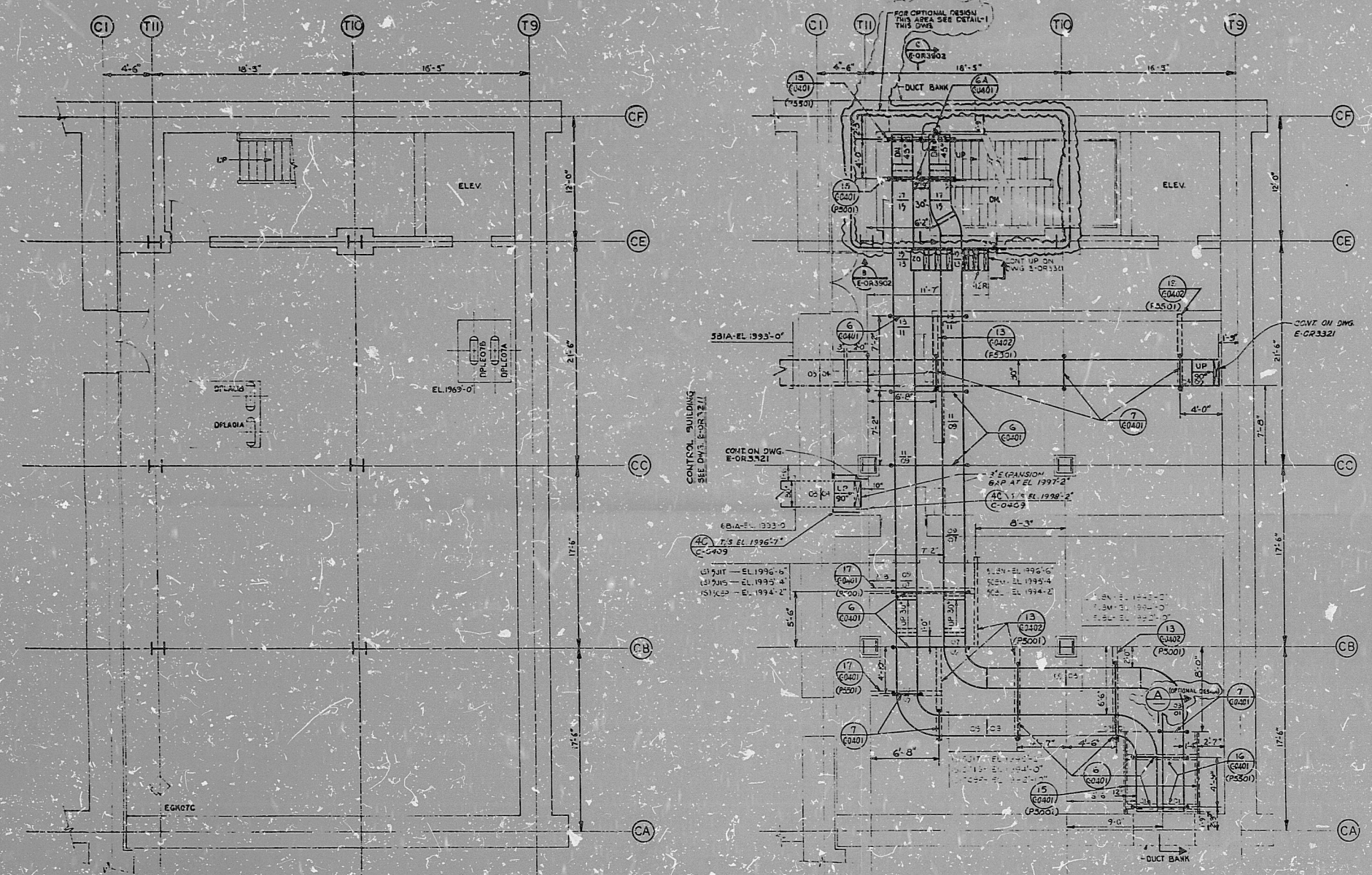
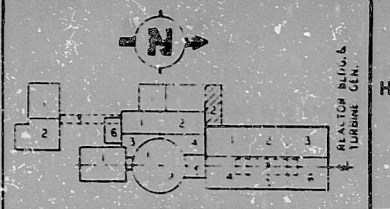


E-OR3221



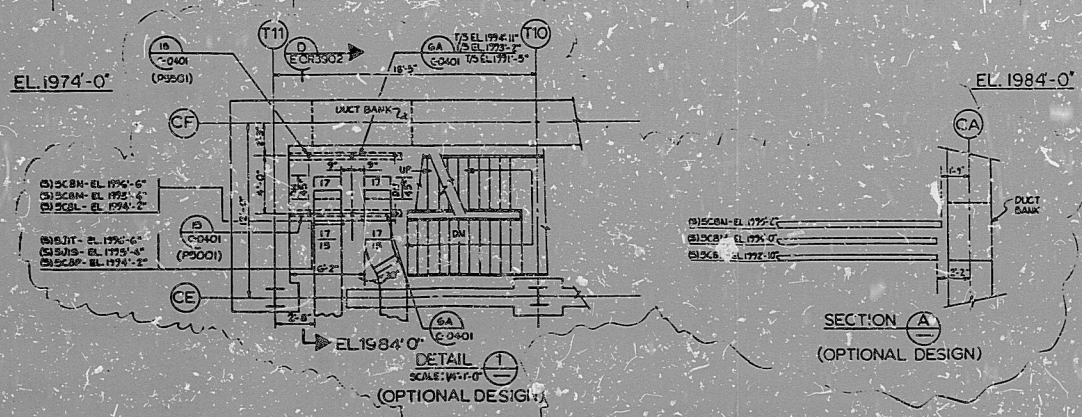
All raceway cable tray drawings shall be prepared in accordance with the provisions of the National Electrical Code, 1990 Edition, and shall be based on the information furnished by the owner. The contractor shall be responsible for the accuracy of the information furnished by the owner. The contractor shall be responsible for the accuracy of the information furnished by the owner.



REACTOR BLDG.
 KEY PLAN
 REFERENCE DRAWINGS
 E-OR3221 RACEWAY NOTES, SYMBOLS AND DETAILS
 E-OR3221 RACEWAY PLAN COMM. CORRIDOR AREA-2 EL. 2000'-0"
 C-0401 CIVIL STRUCTURAL CABLE TRAY SUPPORTS SHIT. NO. 1
 C-0402 CIVIL STRUCTURAL CABLE TRAY SUPPORTS SHIT. NO. 2

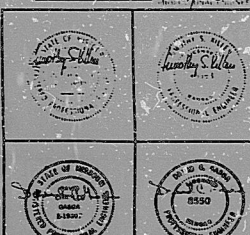
NOTES
 1. ALL CABLE TRAYS ARE 24" WIDE AND ALL TRAY FITTINGS SHALL HAVE A 24" RADIUS UNLESS OTHERWISE NOTED.
 2. ALL CABLE TRAYS ARE 3" HIGH.
 3. FOR TRAY SUPPORT MATERIALS SEE ELECTRICAL SPECIFICATION NO. 10.10466-E-037.

TI
 APERTURE
 CARD



COORDINATION FOR DESIGN OFF

DESIGN	7	8
BLDG.	N/R	N/E
MECH.	N/R	N/E
ELECT.	N/R	N/E
PLUMB.	N/R	N/E
HAZAR.	N/R	N/E
INDUS.	N/R	N/E
OTHER	N/R	N/E



NO.	DESCRIPTION	DATE	BY	CHECKED
1	ISSUED FOR CONSTRUCTION	7/31/75	JEM/AMG	G. J.
2	REVISION			
3	REVISION			
4	REVISION			
5	REVISION			
6	REVISION			
7	REVISION			
8	REVISION			

BECHTEL
 BATHINGEN, MARYLAND
 SNUPPS
 RACEWAY PLAN
 COMMUNICATION CORRIDOR
 AREA-2 EL. 1974'-0" & EL. 1984'-0"
 10466 E-OR3221
 SITE AE RELATED

8410050/35

PDR RIDS

