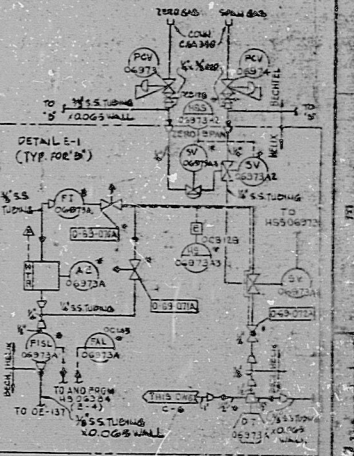


- NOTES**
- 1) * DENOTES COMPONENTS SUPPLIED BY HELIX PROCESS SYSTEM UNDER P.O. M-308
 - 2) # DENOTES COMPONENTS SUPPLIED BY AIRCO UNDER P.O. M-35, AND REUSED UNDER P.O. M-308
 - 3) VALVE STEM LEAK-OFF CONNECTIONS SHALL BE OF THE LEAK-OFF COLLECTION SYSTEM. BACKING RINGS SHALL NOT BE USED IN ANY WELD SHEET 306 OF DRAWING 855-14-100. PIPING CLASS SHEET SHALL BE USED FOR WELD END-PRE PARATIONS.
 - 4) THE FOLLOWING LINES SHALL BE CLASSIFIED AND BUILT (QUALITY GROUP D AUGMENTED) AND MATERIAL MANUFACTURER'S CERTIFICATES OF COMPLIANCE OR MILL TEST REPORTS ARE REQUIRED: HBD-79; HBD-87; ALL ON-SKID PIPING.
 - 5) ALL T.E.'S ARE SINGLE ELEMENTS UNLESS OTHERWISE NOTED.
 - 6) LINE OCB-1 WAS INITIALLY SPECIFIED AS ASME SECTION III, CLASS 3 (QUALITY GROUP C), HOWEVER THIS LINE ONLY NEEDS TO BE INSTALLED PER ANSI B31.1 (QUALITY GROUP D AUGMENTED) REQUIREMENTS. ON-SKID PIPING IS DESIGNED BY HELIX PROCESS SYSTEM 6 UNDER P.O. M-308, AND PURCHASED AND INSTALLED BY BECHTEL.
 - 7) WROD ROOT VALVES ARE 1/2" ERGOTEST VALVES WITH DIAPHRAGM STEM SEALS PROVIDED BY HELIX UNDER P.O. M-308. DO NOT USE STANDARD ROOT VALVES IN THESE POSITIONS.
 - 8) HELIX SUPPLIED VALVES WITH POSITIONERS ARE EQUIPPED WITH 1/2" AIR PRESSURE WITH POS. BY HELIX TO BE SET AT 20 PSIG.
 - 9) LAST SERIAL VALVE UNDER USED IS O-4 OTI.



REFERENCE DRAWINGS

BECHTEL NO.	FL. NO.
M-100	E-104209
M-121	E-104210
M-125, 241, 2	E-104230, 2
M-131	E-104236
M-135, 341	E-104274
M-218	E-104275
M-123	E-104234
M-219	E-104232

NO.	DESCRIPTION	DATE	BY	CHKD.
1	ISSUED FOR CONSTRUCTION	11/15/54		
2	REVISED PER CHANGE LIST # 1	12/15/54		
3	REVISED PER CHANGE LIST # 2	1/15/55		
4	REVISED PER CHANGE LIST # 3	2/15/55		
5	REVISED PER CHANGE LIST # 4	3/15/55		
6	REVISED PER CHANGE LIST # 5	4/15/55		
7	REVISED PER CHANGE LIST # 6	5/15/55		
8	REVISED PER CHANGE LIST # 7	6/15/55		
9	REVISED PER CHANGE LIST # 8	7/15/55		
10	REVISED PER CHANGE LIST # 9	8/15/55		
11	REVISED PER CHANGE LIST # 10	9/15/55		
12	REVISED PER CHANGE LIST # 11	10/15/55		
13	REVISED PER CHANGE LIST # 12	11/15/55		
14	REVISED PER CHANGE LIST # 13	12/15/55		
15	REVISED PER CHANGE LIST # 14	1/15/56		
16	REVISED PER CHANGE LIST # 15	2/15/56		
17	REVISED PER CHANGE LIST # 16	3/15/56		
18	REVISED PER CHANGE LIST # 17	4/15/56		
19	REVISED PER CHANGE LIST # 18	5/15/56		
20	REVISED PER CHANGE LIST # 19	6/15/56		
21	REVISED PER CHANGE LIST # 20	7/15/56		
22	REVISED PER CHANGE LIST # 21	8/15/56		
23	REVISED PER CHANGE LIST # 22	9/15/56		
24	REVISED PER CHANGE LIST # 23	10/15/56		
25	REVISED PER CHANGE LIST # 24	11/15/56		
26	REVISED PER CHANGE LIST # 25	12/15/56		
27	REVISED PER CHANGE LIST # 26	1/15/57		
28	REVISED PER CHANGE LIST # 27	2/15/57		
29	REVISED PER CHANGE LIST # 28	3/15/57		
30	REVISED PER CHANGE LIST # 29	4/15/57		
31	REVISED PER CHANGE LIST # 30	5/15/57		
32	REVISED PER CHANGE LIST # 31	6/15/57		
33	REVISED PER CHANGE LIST # 32	7/15/57		
34	REVISED PER CHANGE LIST # 33	8/15/57		
35	REVISED PER CHANGE LIST # 34	9/15/57		
36	REVISED PER CHANGE LIST # 35	10/15/57		
37	REVISED PER CHANGE LIST # 36	11/15/57		
38	REVISED PER CHANGE LIST # 37	12/15/57		
39	REVISED PER CHANGE LIST # 38	1/15/58		
40	REVISED PER CHANGE LIST # 39	2/15/58		
41	REVISED PER CHANGE LIST # 40	3/15/58		
42	REVISED PER CHANGE LIST # 41	4/15/58		
43	REVISED PER CHANGE LIST # 42	5/15/58		
44	REVISED PER CHANGE LIST # 43	6/15/58		
45	REVISED PER CHANGE LIST # 44	7/15/58		
46	REVISED PER CHANGE LIST # 45	8/15/58		
47	REVISED PER CHANGE LIST # 46	9/15/58		
48	REVISED PER CHANGE LIST # 47	10/15/58		
49	REVISED PER CHANGE LIST # 48	11/15/58		
50	REVISED PER CHANGE LIST # 49	12/15/58		
51	REVISED PER CHANGE LIST # 50	1/15/59		
52	REVISED PER CHANGE LIST # 51	2/15/59		
53	REVISED PER CHANGE LIST # 52	3/15/59		
54	REVISED PER CHANGE LIST # 53	4/15/59		
55	REVISED PER CHANGE LIST # 54	5/15/59		
56	REVISED PER CHANGE LIST # 55	6/15/59		
57	REVISED PER CHANGE LIST # 56	7/15/59		
58	REVISED PER CHANGE LIST # 57	8/15/59		
59	REVISED PER CHANGE LIST # 58	9/15/59		
60	REVISED PER CHANGE LIST # 59	10/15/59		
61	REVISED PER CHANGE LIST # 60	11/15/59		
62	REVISED PER CHANGE LIST # 61	12/15/59		
63	REVISED PER CHANGE LIST # 62	1/15/60		
64	REVISED PER CHANGE LIST # 63	2/15/60		
65	REVISED PER CHANGE LIST # 64	3/15/60		
66	REVISED PER CHANGE LIST # 65	4/15/60		
67	REVISED PER CHANGE LIST # 66	5/15/60		
68	REVISED PER CHANGE LIST # 67	6/15/60		
69	REVISED PER CHANGE LIST # 68	7/15/60		
70	REVISED PER CHANGE LIST # 69	8/15/60		
71	REVISED PER CHANGE LIST # 70	9/15/60		
72	REVISED PER CHANGE LIST # 71	10/15/60		
73	REVISED PER CHANGE LIST # 72	11/15/60		
74	REVISED PER CHANGE LIST # 73	12/15/60		
75	REVISED PER CHANGE LIST # 74	1/15/61		
76	REVISED PER CHANGE LIST # 75	2/15/61		
77	REVISED PER CHANGE LIST # 76	3/15/61		
78	REVISED PER CHANGE LIST # 77	4/15/61		
79	REVISED PER CHANGE LIST # 78	5/15/61		
80	REVISED PER CHANGE LIST # 79	6/15/61		
81	REVISED PER CHANGE LIST # 80	7/15/61		
82	REVISED PER CHANGE LIST # 81	8/15/61		
83	REVISED PER CHANGE LIST # 82	9/15/61		
84	REVISED PER CHANGE LIST # 83	10/15/61		
85	REVISED PER CHANGE LIST # 84	11/15/61		
86	REVISED PER CHANGE LIST # 85	12/15/61		
87	REVISED PER CHANGE LIST # 86	1/15/62		
88	REVISED PER CHANGE LIST # 87	2/15/62		
89	REVISED PER CHANGE LIST # 88	3/15/62		
90	REVISED PER CHANGE LIST # 89	4/15/62		
91	REVISED PER CHANGE LIST # 90	5/15/62		
92	REVISED PER CHANGE LIST # 91	6/15/62		
93	REVISED PER CHANGE LIST # 92	7/15/62		
94	REVISED PER CHANGE LIST # 93	8/15/62		
95	REVISED PER CHANGE LIST # 94	9/15/62		
96	REVISED PER CHANGE LIST # 95	10/15/62		
97	REVISED PER CHANGE LIST # 96	11/15/62		
98	REVISED PER CHANGE LIST # 97	12/15/62		
99	REVISED PER CHANGE LIST # 98	1/15/63		
100	REVISED PER CHANGE LIST # 99	2/15/63		

PENNSYLVANIA POWER & LIGHT COMPANY
ALLEGHENY PLANT

BECHTEL - SAN FRANCISCO

P&ID COMMON
OFFGAS RECOMBINER SYSTEM

854 M-169 54-2

106274-6

RIDS

8305269030

