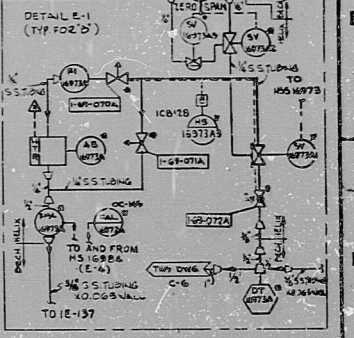


UNCONTROLLED DOCUMENT  
FOR REFERENCE ONLY

NOTES

- 1) DENOTES COMPONENTS SUPPLIED BY HELIX PROCESS SYSTEMS UNDER P.O. M-340
- 2) DENOTES COMPONENTS SUPPLIED BY AIRCO UNDER P.O. M-55 AND REUSED UNDER P.O. M-368.
- 3) VALVE STEM LEAK-OFF CONNECTIONS SHALL BE CONNECTED TO THE LEAK-OFF COLLECTION SYSTEM, P.410-M-129.
- 4) BACKING SWGS SHALL NOT BE USED IN ANY WELD SHEET 306 OF DRAWING B.0867-M-199, PIPING CLASS SHEET SHALL BE USED FOR WELD END PREPARATIONS.
- 5) THE FOLLOWING LINES SHALL BE CLASSIFIED AS BELL QUALITY GROUP D AUGMENTED AND MATERIAL MANUFACTURER'S CERTIFICATES OF COMPLIANCE OR MILL TEST REPORTS ARE REQUIRED: H2O-119 FROM AND INCLUDING VALVE H-169-050 TO PREHEATER INLET AND TO VALVE H-V-169-051 FROM VALVE H-169-051 TO H-169-076 FROM AND INCLUDING VALVE H-169-052 TO VALVE H-169-053; H2O-176 FROM H-169-052 TO VALVE H-169-053; H2O-79 ALL ON-SKID PIPING. ALL FITS ARE SHOWN SILENT UNLESS OTHERWISE NOTED.
- 6) LINE SPECIFICATIONS INITIALLY SPECIFIED AS ABOVE SHALL BE MAINTAINED UNLESS OTHERWISE NOTED. THIS LINE ONLY NEEDS TO BE NOTATED SINCE ALL FITS ARE SHOWN SILENT UNLESS OTHERWISE NOTED.
- 7) ON-SKID PIPING IS DESIGNED BY HELIX PROCESS SYSTEMS UNDER P.O. M-5508 AND IS PURCHASED AND INSTALLED BY BRCHTEL.
- 8) NOTED ROOT VALVES ARE TO BE ROOT VALVES WITH TIGHTENING SEALS PROVIDED BY HELIX (OCU) UNDER P.O. M-5508 DO NOT USE STANDARD ROOT VALVES AT THESE POSITIONS.
- 9) HELIX ROOT VALVES WITH TIGHTENING SEALS PROVIDED BY HELIX TO BE SET AT 25 PSIG.
- 10) PROVIDE SEPARATE AIR SUPPLY FOR SV-4006 TO RACK K-110.



REFERENCE DRAWINGS

BECHTEL NO.	P.L. NO.
M-102	E-106205
M-107	E-106212
M-125, SH.2	E-106230-2
M-131	E-106236
M-171	E-106276
M-169, SH.2	E-106274-2

REVISED PER CHANGE LIST NO. 100 FOR UNIT 1 OFF GAS RECOMBINER SYSTEM	DATE	BY
REVISED PER CHANGE LIST NO. 101 FOR UNIT 1 OFF GAS RECOMBINER SYSTEM	DATE	BY
REVISED PER CHANGE LIST NO. 102 FOR UNIT 1 OFF GAS RECOMBINER SYSTEM	DATE	BY
REVISED PER CHANGE LIST NO. 103 FOR UNIT 1 OFF GAS RECOMBINER SYSTEM	DATE	BY
REVISED PER CHANGE LIST NO. 104 FOR UNIT 1 OFF GAS RECOMBINER SYSTEM	DATE	BY
REVISED PER CHANGE LIST NO. 105 FOR UNIT 1 OFF GAS RECOMBINER SYSTEM	DATE	BY
REVISED PER CHANGE LIST NO. 106 FOR UNIT 1 OFF GAS RECOMBINER SYSTEM	DATE	BY
REVISED PER CHANGE LIST NO. 107 FOR UNIT 1 OFF GAS RECOMBINER SYSTEM	DATE	BY
REVISED PER CHANGE LIST NO. 108 FOR UNIT 1 OFF GAS RECOMBINER SYSTEM	DATE	BY
REVISED PER CHANGE LIST NO. 109 FOR UNIT 1 OFF GAS RECOMBINER SYSTEM	DATE	BY
REVISED PER CHANGE LIST NO. 110 FOR UNIT 1 OFF GAS RECOMBINER SYSTEM	DATE	BY
REVISED PER CHANGE LIST NO. 111 FOR UNIT 1 OFF GAS RECOMBINER SYSTEM	DATE	BY
REVISED PER CHANGE LIST NO. 112 FOR UNIT 1 OFF GAS RECOMBINER SYSTEM	DATE	BY
REVISED PER CHANGE LIST NO. 113 FOR UNIT 1 OFF GAS RECOMBINER SYSTEM	DATE	BY
REVISED PER CHANGE LIST NO. 114 FOR UNIT 1 OFF GAS RECOMBINER SYSTEM	DATE	BY
REVISED PER CHANGE LIST NO. 115 FOR UNIT 1 OFF GAS RECOMBINER SYSTEM	DATE	BY
REVISED PER CHANGE LIST NO. 116 FOR UNIT 1 OFF GAS RECOMBINER SYSTEM	DATE	BY
REVISED PER CHANGE LIST NO. 117 FOR UNIT 1 OFF GAS RECOMBINER SYSTEM	DATE	BY
REVISED PER CHANGE LIST NO. 118 FOR UNIT 1 OFF GAS RECOMBINER SYSTEM	DATE	BY
REVISED PER CHANGE LIST NO. 119 FOR UNIT 1 OFF GAS RECOMBINER SYSTEM	DATE	BY
REVISED PER CHANGE LIST NO. 120 FOR UNIT 1 OFF GAS RECOMBINER SYSTEM	DATE	BY

**PENNSYLVANIA POWER & LIGHT COMPANY**  
 ALL RIGHTS RESERVED  
 SUBSTATION SYSTEM ELECTRIC SYSTEM - UNIT 1, UNIT 2  
 BECHTEL - SAN FRANCISCO  
**P&I.D. UNIT 1**  
**OFF GAS RECOMBINER SYSTEM**  
 SHEET NO. 8556 M-169 SH.1 15  
 E-106274-1

11  
8.5  
11  
8.5  
11  
17

RIDS

8305260028

