

14

13

12

11

10

9

8

7

6

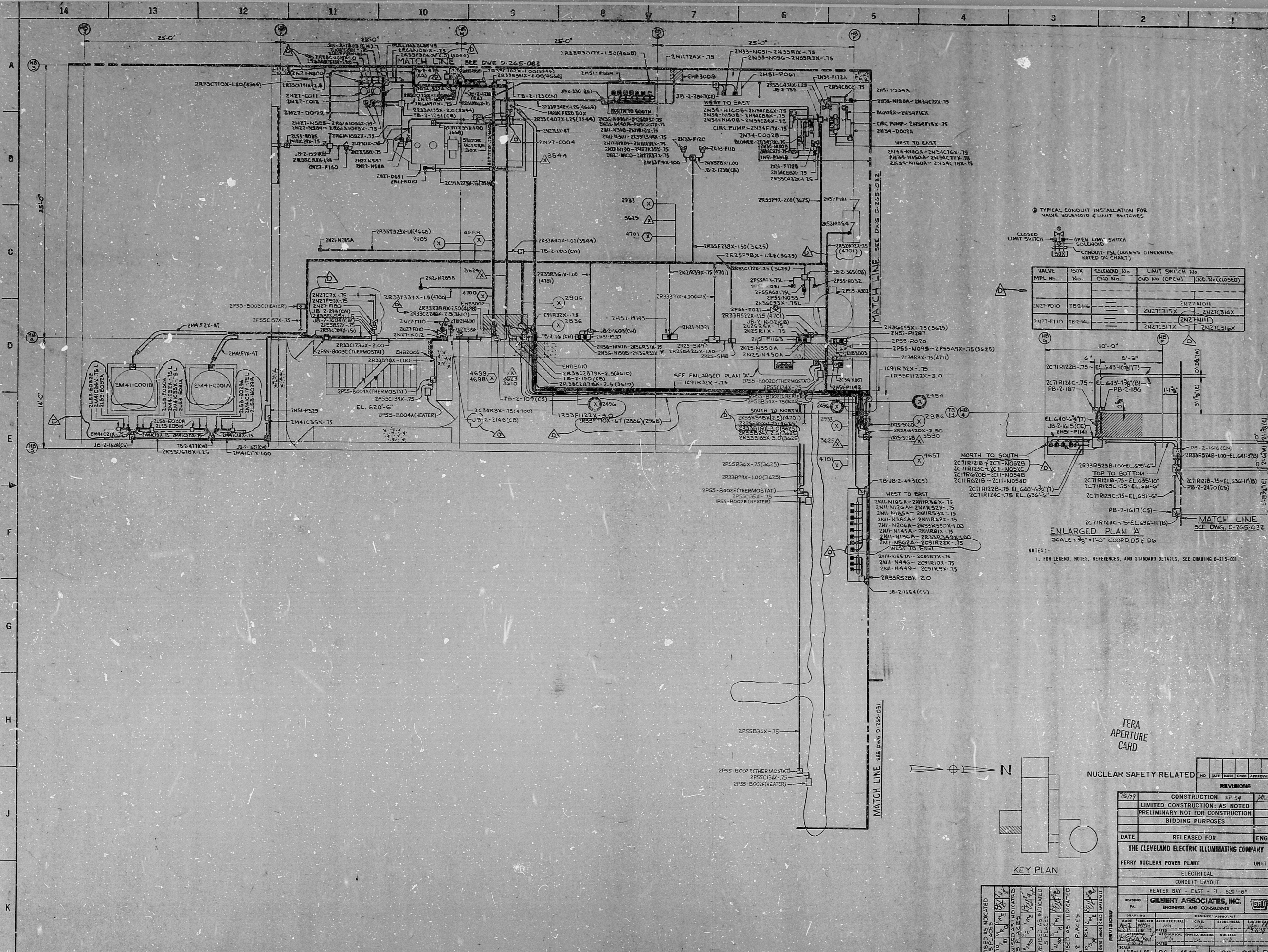
5

4

3

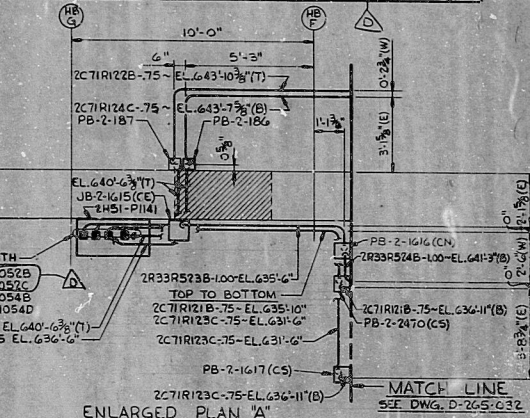
2

1

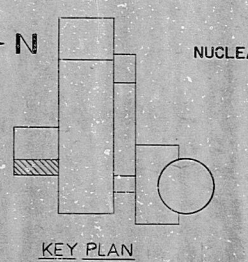


○ TYPICAL CONDUIT INSTALLATION FOR VALVE SOLENOID LIMIT SWITCHES

VALVE	BOX	SOLENOID	LIMIT SWITCH
MPL No.	No.	CND No.	CND No. (OP. CM)
2N21-FOID	TB-2144	2N21-FOID	2N21-FOID
2N21-F110	TB-2146	2N21-F110	2N21-F110



NOTES:  
1. FOR LEGEND, NOTES, REFERENCES, AND STANDARD DETAILS, SEE DRAWING D-315-001.



TERA APERTURE CARD

NUCLEAR SAFETY RELATED

NO.	DATE	BY	CHKD	APPROVALS
1	10/2/77			

CONSTRUCTION 57 3/4

LIMITED CONSTRUCTION: AS NOTED

PRELIMINARY NOT FOR CONSTRUCTION BIDDING PURPOSES

DATE RELEASED FOR ENGR.

THE CLEVELAND ELECTRIC ILLUMINATING COMPANY

PERRY NUCLEAR POWER PLANT UNIT 2

ELECTRICAL CONDUIT LAYOUT

HEATER BAY - EAST - EL. 620'-6"

GILBERT ASSOCIATES, INC. ENGINEERS AND CONSULTANTS

SCALE: 1/8" = 1'-0" D4 4549 D-265-081 D

34"

34"



RIDS

8112040259

