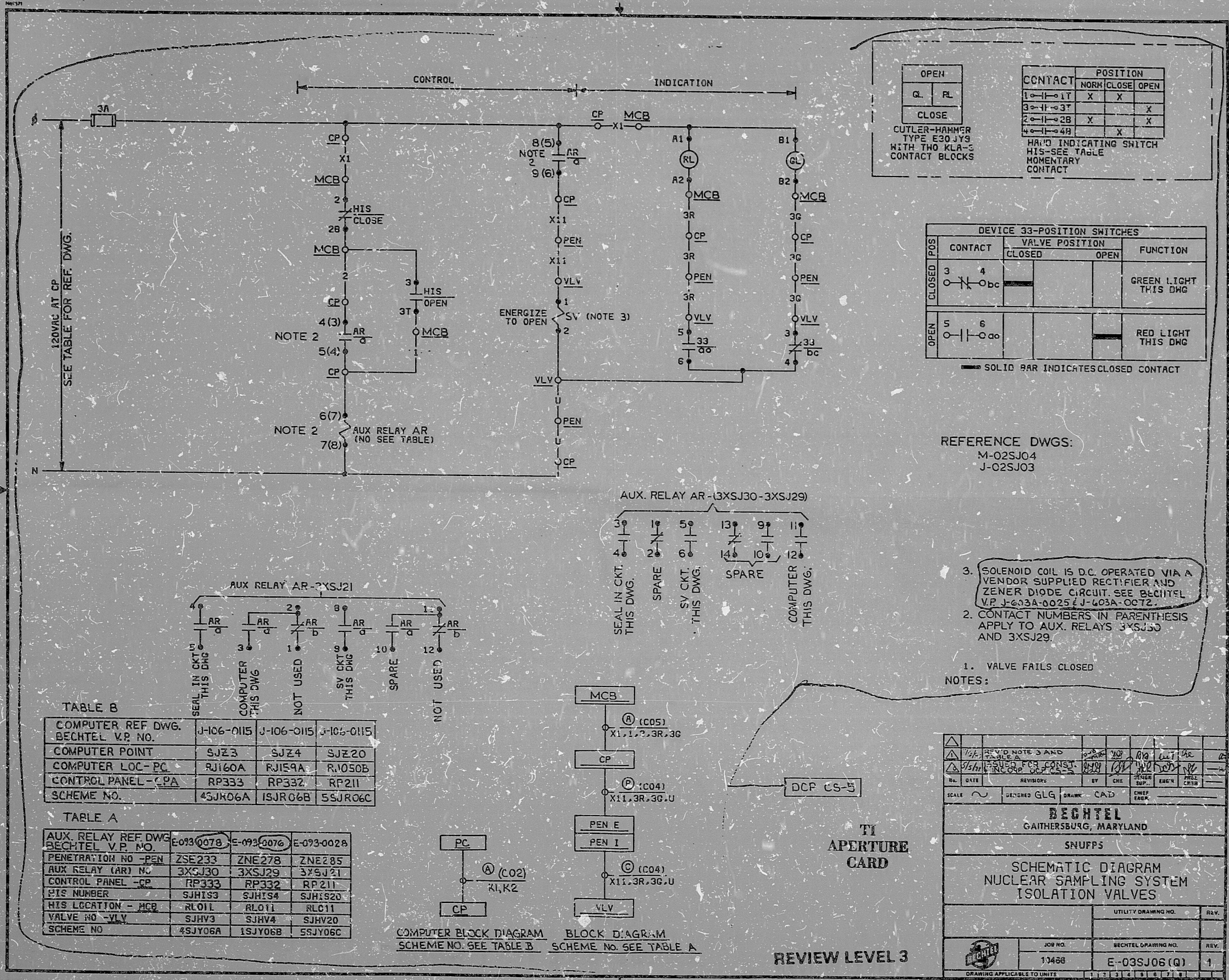


This drawing and the design it covers is the property of the utilities which are participating in the SNUPPS Project. It is loaned on the borrower's express agreement that it will not be reproduced, copied, loaned, exhibited, or used except in the limited way and private use permitted by written consent given by the SNUPPS Utilities of the Borrower.



OPEN		CONTACT		POSITION	
G	RL	1-1-1T	X	NORM	CLOSE
CLOSE		3-1-1-3T			OPEN
		2-1-1-2B	X		
		4-1-1-4B	X		

CUTLER-HAMMER TYPE E30 JY9 WITH TWO KLA-3 CONTACT BLOCKS

HARD INDICATING SWITCH HIS-SEE TABLE MOMENTARY CONTACT

DEVICE 33-POSITION SWITCHES				
POS	CONTACT	VALVE POSITION		FUNCTION
		CLOSED	OPEN	
3	4	bc		GREEN LIGHT THIS DWG
5	6	ca		
				RED LIGHT THIS DWG

SOLID BAR INDICATES CLOSED CONTACT

REFERENCE DWGS:  
M-02SJ04  
J-02SJ03

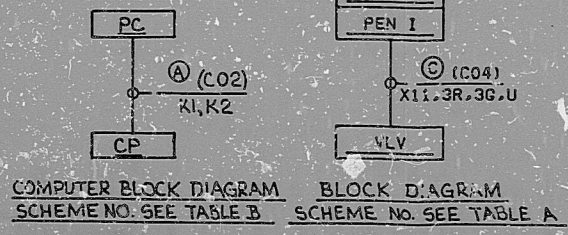
- NOTES:
1. VALVE FAILS CLOSED
  2. CONTACT NUMBERS IN PARENTHESIS APPLY TO AUX. RELAYS 3XSJ30 AND 3XSJ29.
  3. SOLENOID COIL IS D.C. OPERATED VIA A VENDOR SUPPLIED RECTIFIER AND ZENER DIODE CIRCUIT. SEE BECHTEL V.P. J-603A-0025 & J-603A-0072.

TABLE B

COMPUTER REF DWG. BECHTEL V.P. NO.	J-106-0115	J-106-0115	J-105-0115
COMPUTER POINT	SJZ3	SJZ4	SJZ20
COMPUTER LOC-PC	RJ160A	RJ159A	RJ1050B
CONTROL PANEL-CPA	RP333	RP332	RP211
SCHEME NO.	45JK06A	1SJR06B	5SJR06C

TABLE A

AUX. RELAY REF DWG. BECHTEL V.P. NO.	E-093-0078	E-093-0076	E-093-0028
PENETRATION NO -PEN	ZSE233	ZNE278	ZNE285
AUX RELAY (AR) NO.	3XSJ30	3XSJ29	3XSJ21
CONTROL PANEL -CP	RP333	RP332	RP211
PIS NUMBER	SJH193	SJH194	SJH1920
HIS LOCATION - MCB	RL011	RL011	RL011
VALVE NO -VLV	SJHV3	SJHV4	SJHV20
SCHEME NO.	4SJO6A	1SJO6B	5SJO6C



TI APERTURE CARD

REVIEW LEVEL 3

SCALE	DESIGNED	GLG	DRAWN	CAJ	CHECK	ESK
<b>BECHTEL</b>						
GAITHERSBURG, MARYLAND						
SNUPPS						
SCHEMATIC DIAGRAM NUCLEAR SAMPLING SYSTEM ISOLATION VALVES						
UTILITY DRAWING NO.					REV.	
JOB NO.					BECHTEL DRAWING NO.	REV.
11488					E-03SJO6 (Q)	1

I certify that the image contained on this frame was made in the normal and regular course of business, on the date stated below and that it is an accurate reproduction of the document(s) submitted to Micrographics.  
DATE 7/12/83 OPERATOR *Mark ...* SUPERVISOR *...*

8410050072

PDR RIDS

