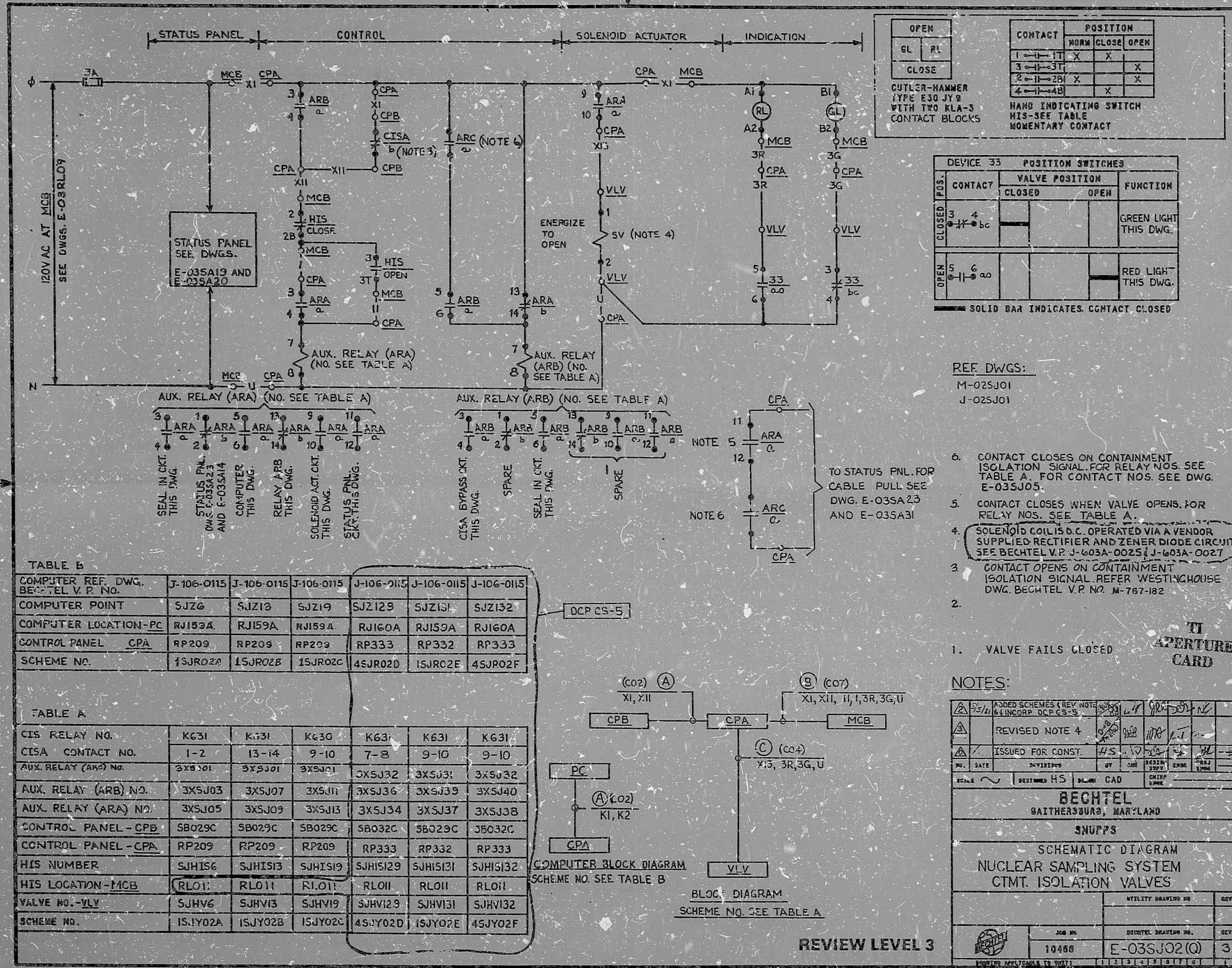


This drawing and the design it covers is the property of the utilities which are participating in the SNUPPS Project. It is loaned on the borrower's express agreement that it will not be reproduced, copied, loaned, exhibited, or used except in the limited way and private use permitted by written consent given by the SNUPPS Utilities to the borrower.



OPEN		CONTACT		POSITION		
GL	RL			NORM	CLOSE	OPEN
		1	1-1T	X		X
		3	3-1-3T			X
		2	2-1-2B	X		X
		4	4-1-4B		X	

CUTLER-HAMMER TYPE E30 JY9 WITH TWO KLA-3 CONTACT BLOCKS

HAND INDICATING SWITCH HIS-SEE TABLE MOMENTARY CONTACT

DEVICE 33 POSITION SWITCHES			
CONTACT POS.	VALVE POSITION		FUNCTION
	CLOSED	OPEN	
3	bc		GREEN LIGHT THIS DWG.
4			
5	ao		RED LIGHT THIS DWG.
6			

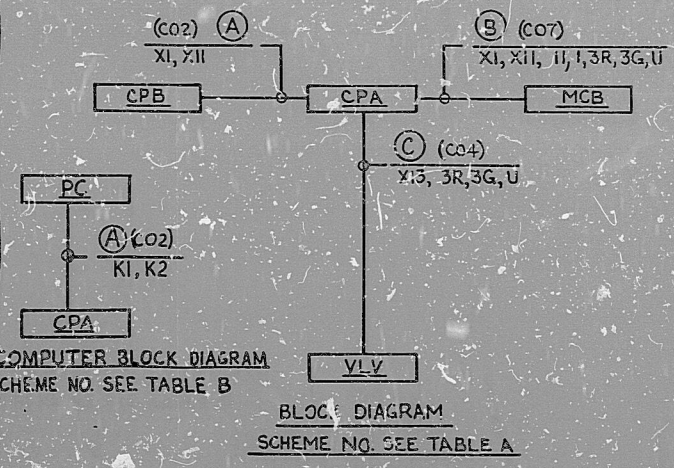
SOLID BAR INDICATES CONTACT CLOSED

REF DWGS:
M-025J01
J-025J01

- CONTACT CLOSURES ON CONTAINMENT ISOLATION SIGNAL FOR RELAY NOS. SEE TABLE A. FOR CONTACT NOS. SEE DWG. E-035J05.
- CONTACT CLOSURES WHEN VALVE OPENS FOR RELAY NOS. SEE TABLE A.
- SOLENOID COIL IS D.C. OPERATED VIA A VENDOR SUPPLIED RECTIFIER AND ZENER DIODE CIRCUIT. SEE BECHTEL V.P. J-603A-0025; J-603A-0027.
- CONTACT OPENS ON CONTAINMENT ISOLATION SIGNAL. REFER WESTINGHOUSE DWG. BECHTEL V.P. NO. M-767-182.

COMPUTER REF. DWG. BECHTEL V.P. NO.	J-106-0115	J-106-0115	J-106-0115	J-106-0115	J-106-0115	J-106-0115
COMPUTER POINT	SJZG	SJZ13	SJZ19	SJZ129	SJZ131	SJZ132
COMPUTER LOCATION-PC	RJ159A	RJ159A	RJ159A	RJ160A	RJ159A	RJ160A
CONTROL PANEL CPA	RP209	RP209	RP209	RP333	RP332	RP333
SCHEME NO.	15JR02A	15JR02B	15JR02C	45JR02D	15JR02E	45JR02F

CIS RELAY NO.	KC31	K131	K630	K631	K631	K631
CISA CONTACT NO.	1-2	13-14	9-10	7-8	9-10	9-10
AUX. RELAY (ARB) NO.	3XSJ01	3XSJ01	3XSJ01	3XSJ32	3XSJ31	3XSJ32
AUX. RELAY (ARA) NO.	3XSJ05	3XSJ09	3XSJ13	3XSJ34	3XSJ37	3XSJ38
CONTROL PANEL - CPB	SB029C	SB029C	SB029C	SB032C	SB029C	SB032C
CONTROL PANEL - CPA	RP209	RP209	RP209	RP333	RP332	RP333
HIS NUMBER	SJHIS6	SJHIS13	SJHIS19	SJHIS129	SJHIS131	SJHIS132
HIS LOCATION - MCB	RLO1	RLO11	RLO11	RLO11	RLO11	RLO11
VALVE NO. - VLV	SJHV6	SJHV13	SJHV19	SJHV129	SJHV131	SJHV132
SCHEME NO.	15JY02A	15JY02B	15JY02C	45JY02D	15JY02E	45JY02F



NOTES:

7/5/71	ADDED SCHEMES (REV. NOTE 4)	BY	DATE	BY	DATE	BY	DATE
	REVISED NOTE 4						
	ISSUED FOR CONST.	4/5					

SCALE: ~ DESTROYED HS. DRAWING CAD

BECHTEL
BAITERSBURG, MARYLAND

SNUPPS

SCHEMATIC DIAGRAM
NUCLEAR SAMPLING SYSTEM
CTMT. ISOLATION VALVES

UTILITY DRAWING NO.	REV.	
JOB NO.	SECRET DRAWING NO.	REV.
10468	E-035J02(Q)	3

REVIEW LEVEL 3

I certify that the image contained on this frame was made in the normal and regular course of business, on the date stated below and that it is an accurate reproduction of the document(s) submitted to Micrographics.
DATE 7/12/83 OPERATOR *Mark Good* SUPERVISOR *William D. [unclear]*



8410050061

PDR RIDS

