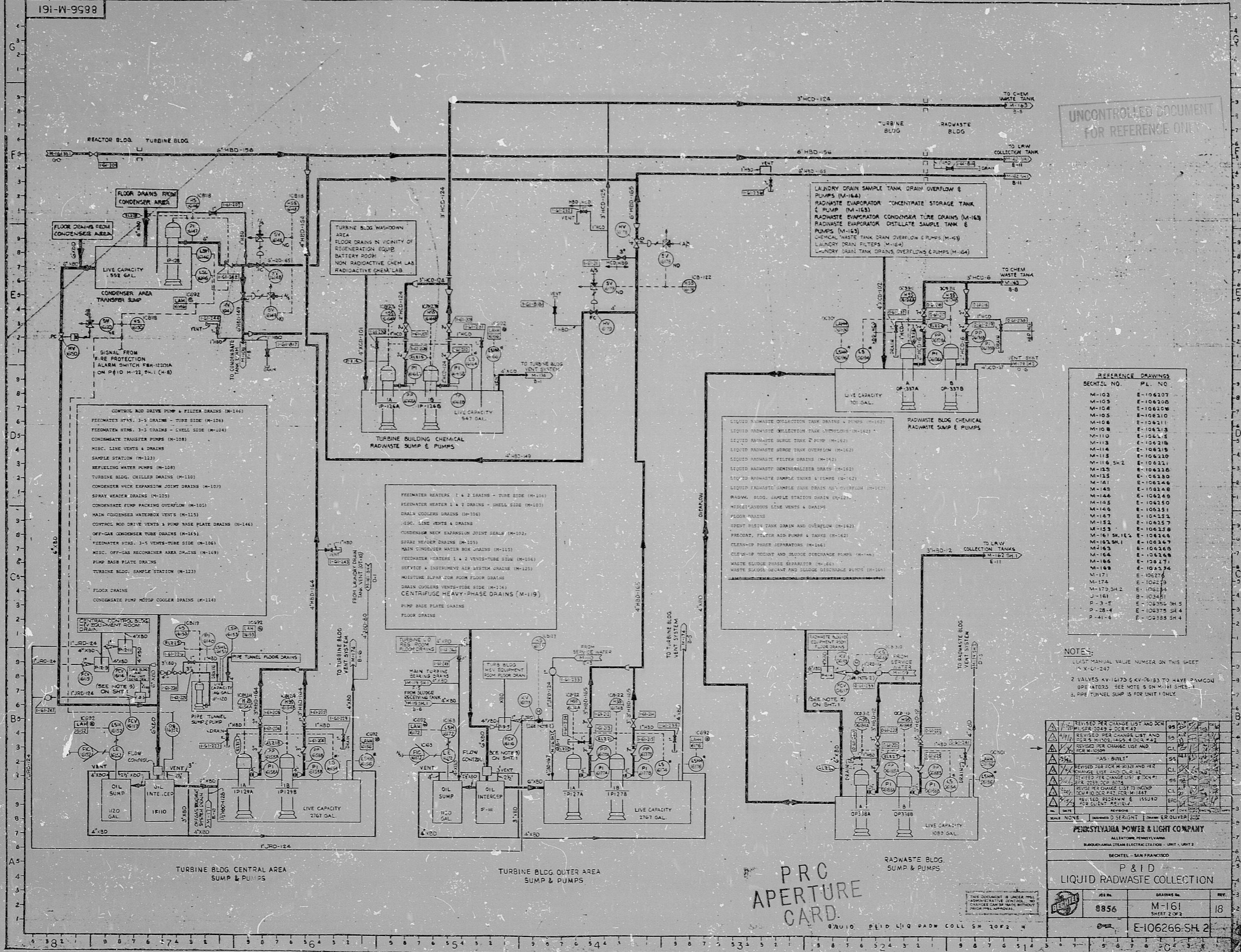


191-W-9938

SIZE R



UNCONTROLLED DOCUMENT FOR REFERENCE ONLY

REFERENCE DRAWINGS

SECTION NO.	PL. NO.
M-103	E-106207
M-105	E-106208
M-106	E-106209
M-107	E-106210
M-108	E-106211
M-109	E-106212
M-110	E-106213
M-111	E-106214
M-112	E-106215
M-113	E-106216
M-114	E-106217
M-115	E-106218
M-116 SH 2	E-106219
M-117	E-106220
M-118	E-106221
M-119	E-106222
M-120	E-106223
M-121	E-106224
M-122	E-106225
M-123	E-106226
M-124	E-106227
M-125	E-106228
M-126	E-106229
M-127	E-106230
M-128	E-106231
M-129	E-106232
M-130	E-106233
M-131	E-106234
M-132	E-106235
M-133	E-106236
M-134	E-106237
M-135	E-106238
M-136	E-106239
M-137	E-106240
M-138	E-106241
M-139	E-106242
M-140	E-106243
M-141	E-106244
M-142	E-106245
M-143	E-106246
M-144	E-106247
M-145	E-106248
M-146	E-106249
M-147	E-106250
M-148	E-106251
M-149	E-106252
M-150	E-106253
M-151	E-106254
M-152	E-106255
M-153	E-106256
M-154	E-106257
M-155	E-106258
M-156	E-106259
M-157	E-106260
M-158	E-106261
M-159	E-106262
M-160	E-106263
M-161	E-106264
M-162	E-106265
M-163	E-106266
M-164	E-106267
M-165	E-106268
M-166	E-106269
M-167	E-106270
M-168	E-106271
M-169	E-106272
M-170	E-106273
M-171	E-106274
M-172	E-106275
M-173	E-106276
M-174	E-106277
M-175	E-106278
M-176	E-106279
M-177	E-106280
M-178	E-106281
M-179	E-106282
M-180	E-106283
M-181	E-106284
M-182	E-106285
M-183	E-106286
M-184	E-106287
M-185	E-106288
M-186	E-106289
M-187	E-106290
M-188	E-106291
M-189	E-106292
M-190	E-106293
M-191	E-106294
M-192	E-106295
M-193	E-106296
M-194	E-106297
M-195	E-106298
M-196	E-106299
M-197	E-106300
M-198	E-106301
M-199	E-106302
M-200	E-106303

NOTES:

LIST MANUAL VALUE NUMBERS ON THIS SHEET
 X-10-247

2 VALVES KV-1273 & KV-0633 TO HAVE RAMCOU OPERATORS SEE NOTE 5 ON M-161 SHEET

3. PIPE TUNNEL SUPP IS FOR UNIT 1 ONLY

REV.	DESCRIPTION	DATE	BY	CHKD.
1	REVISED PER CHANGE LIST AND DCN	10/24/74
2	REVISED PER CHANGE LIST AND DCN	10/24/74
3	REVISED PER CHANGE LIST AND DCN	10/24/74
4	REVISED PER CHANGE LIST AND DCN	10/24/74
5	REVISED PER CHANGE LIST AND DCN	10/24/74
6	REVISED PER CHANGE LIST AND DCN	10/24/74
7	REVISED PER CHANGE LIST AND DCN	10/24/74
8	REVISED PER CHANGE LIST AND DCN	10/24/74
9	REVISED PER CHANGE LIST AND DCN	10/24/74
10	REVISED PER CHANGE LIST AND DCN	10/24/74
11	REVISED PER CHANGE LIST AND DCN	10/24/74
12	REVISED PER CHANGE LIST AND DCN	10/24/74
13	REVISED PER CHANGE LIST AND DCN	10/24/74
14	REVISED PER CHANGE LIST AND DCN	10/24/74
15	REVISED PER CHANGE LIST AND DCN	10/24/74
16	REVISED PER CHANGE LIST AND DCN	10/24/74
17	REVISED PER CHANGE LIST AND DCN	10/24/74
18	REVISED PER CHANGE LIST AND DCN	10/24/74
19	REVISED PER CHANGE LIST AND DCN	10/24/74
20	REVISED PER CHANGE LIST AND DCN	10/24/74

PENNSYLVANIA POWER & LIGHT COMPANY

ALLEGANY POWER PLANT

REACTOR BUILDING ELECTRICAL SYSTEM - UNIT 2

SECTION - SAN FRANCISCO

P & ID

LIQUID RADWASTE COLLECTION

8856 M-161 18

E-106266-SH 2

PRC APERTURE CARD

30X11

Copyright notice and other small text at the bottom of the page.

RIDS

805250392

