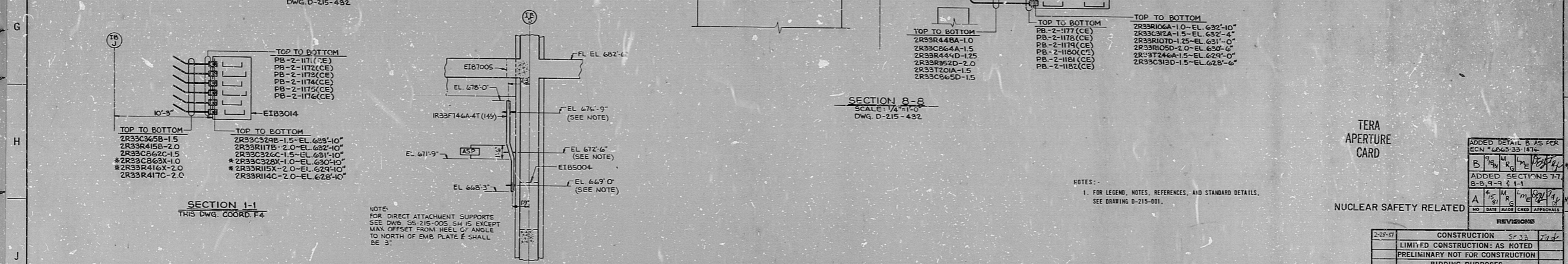
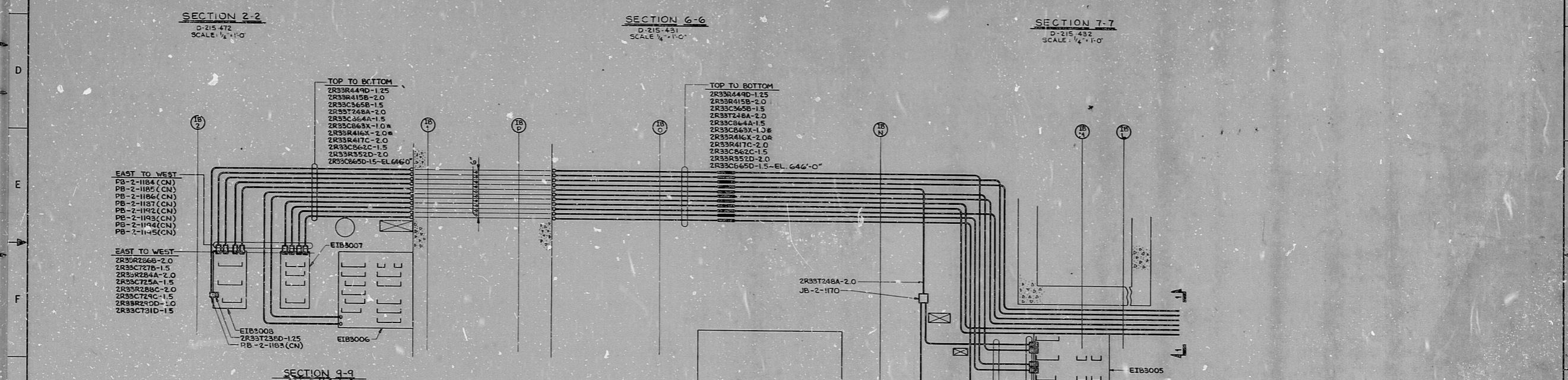
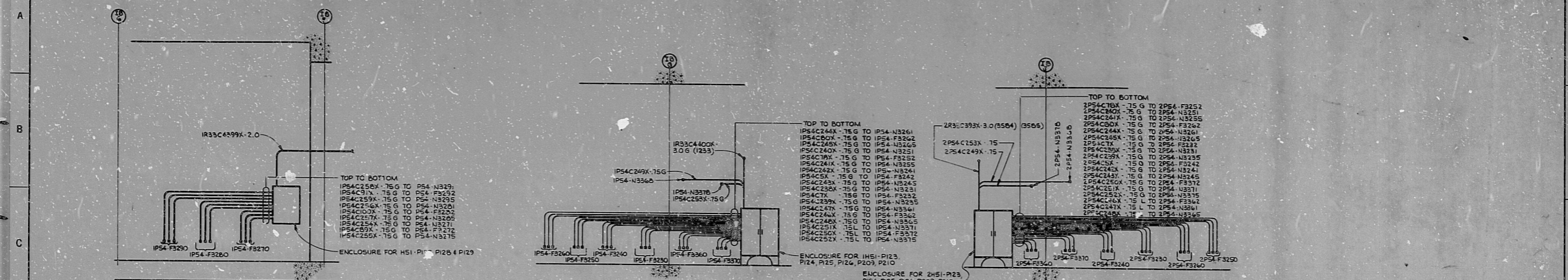


14 13 12 11 10 9 8 7 6 5 4 3 2 1



NOTES:
1. FOR LEGEND, NOTES, REFERENCES, AND STANDARD DETAILS, SEE DRAWING D-215-001.

TERA APERTURE CARD

NUCLEAR SAFETY RELATED

REVISIONS

NO.	DATE	DESCRIPTION
1		ADDED DETAIL B' AS PER ECN PLANS 33-1174
2		ADDED SECTIONS 7-7, 8-5, 8-11, & 11
3		REVISED APPROVALS

CONSTRUCTION SP. 33 77-42

LIMITED CONSTRUCTION: AS NOTED

PRELIMINARY NOT FOR CONSTRUCTION BIDDING PURPOSES

DATE: _____ RELEASED FOR: ENGR

THE CLEVELAND ELECTRIC ILLUMINATING COMPANY

PERRY NUCLEAR POWER PLANT UNITS 1 & 2

ELECTRICAL CONDUIT LAYOUT

INTERMEDIATE BUILDING SECTIONS AND DETAILS

GILBERT ASSOCIATES, INC.
ENGINEERS AND ARCHITECTS

DESIGNED BY	CHECKED BY	DATE
DRAWN BY	DATE	
SCALE	DATE	

SCALE: 1/4" = 1'-0"
DATE: 04-45-49
D-215-671
DRAWING NUMBER: B

INTER BLDG SECTIONS & DETAILS

RIDS

812040195

