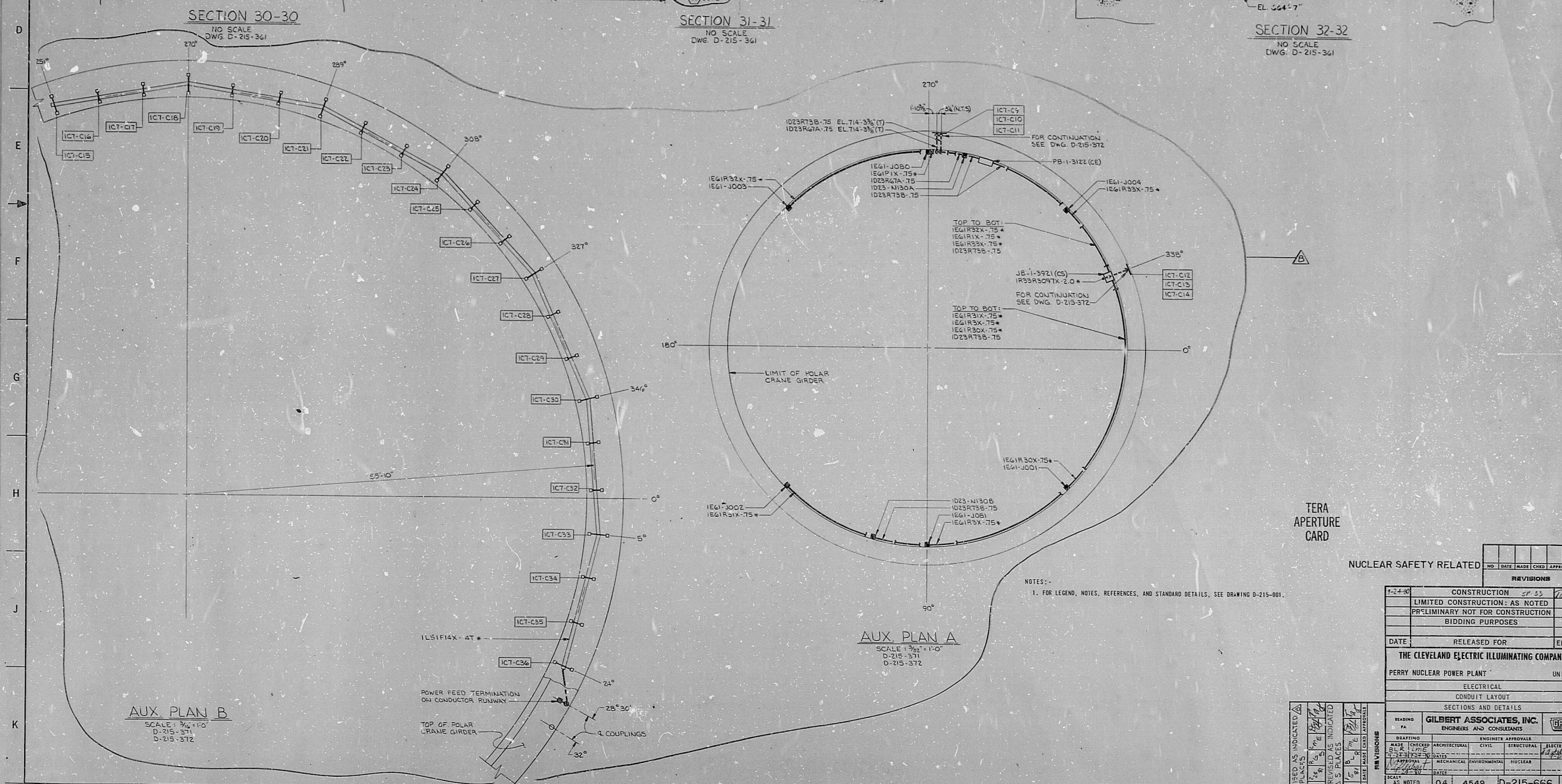
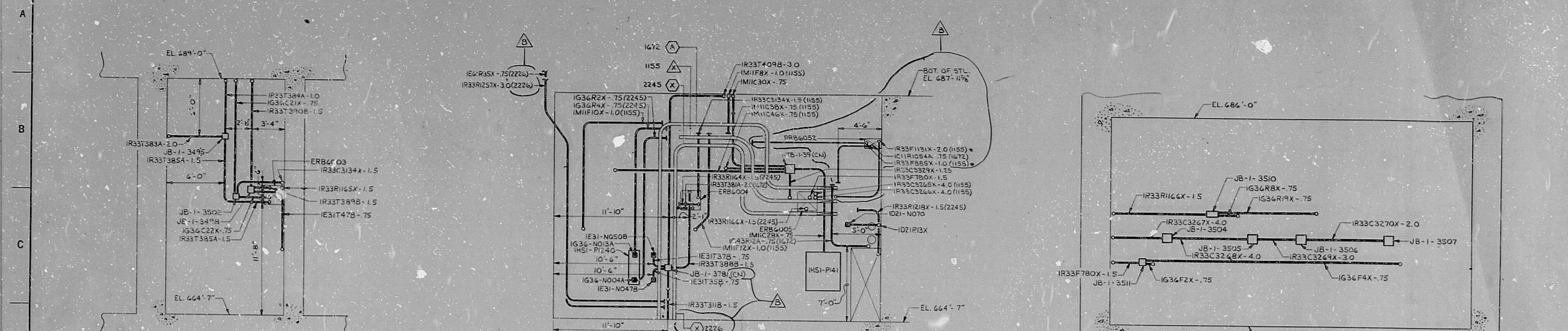


14 13 12 11 10 9 8 7 6 5 4 3 2 1



NO SCALE DWG. D-215-361
NO SCALE DWG. D-215-361
NO SCALE DWG. D-215-361
SCALE: 3/8"=1'-0" D-215-371 D-215-372
SCALE: 1/4"=1'-0" D-215-371 D-215-372

TERA APERTURE CARD

NUCLEAR SAFETY RELATED

NOTES:
1. FOR LEGEND, NOTES, REFERENCES, AND STANDARD DETAILS, SEE DRAWING D-215-001.

NO.	DATE	BY	CHKD	APPROVAL
1-24-60				

REVISIONS

NO.	DESCRIPTION	DATE
1	CONSTRUCTION	5/25/60
2	LIMITED CONSTRUCTION AS NOTED	
3	PRELIMINARY NOT FOR CONSTRUCTION	
4	BIDDING PURPOSES	

DATE: RELEASED FOR ENGR.

THE CLEVELAND ELECTRIC ILLUMINATING COMPANY

PERRY NUCLEAR POWER PLANT UNIT 1

ELECTRICAL CONDUIT LAYOUT

SECTIONS AND DETAILS

DRAWING NO. GILBERT ASSOCIATES, INC. ENGINEERS AND CONSULTANTS

NO.	DATE	BY	CHKD	APPROVAL
1				

REVISIONS

NO.	DESCRIPTION	DATE
1	CONSTRUCTION	5/25/60
2	LIMITED CONSTRUCTION AS NOTED	
3	PRELIMINARY NOT FOR CONSTRUCTION	
4	BIDDING PURPOSES	

DATE: 04 4549 D-215-666 B

DRAWING NUMBER 04549-D-0

CND LYT REAC BLDG SECTI AND DETAILS

R:DS

8/12040/78

