

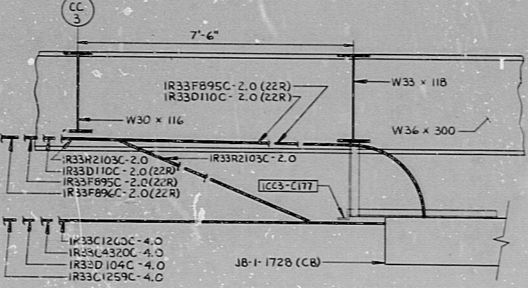
14
13
12
11
10
9
8
7
6
5
4
3
2
1

A
B
C
D
E
F
G
H
J
K

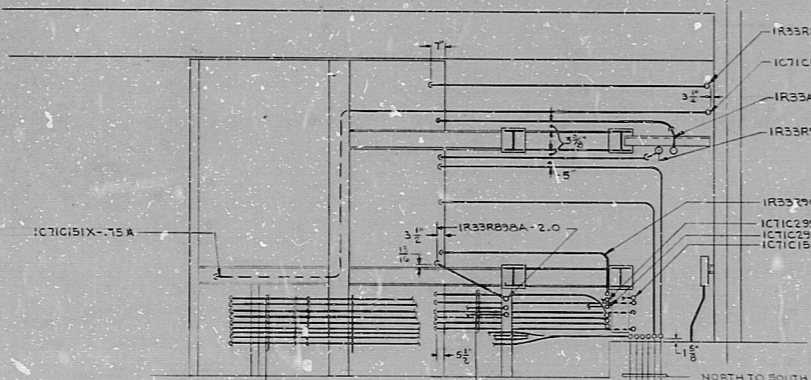
8.5"
11"
17"
22"
34"

8.5"
11"
17"
22"
34"

SECTION 1-1
DWG. D-215-145
SCALE: 1/8" = 1'-0"



SECTION 5-5
SCALE: 1/2" = 1'-0"
T-215-132



SECTION 4-4
DWG. D-215-145
SCALE: 1/8" = 1'-0"

- TOP TO BOTTOM
- IC71C299X-1.25 EL. 640.5'
 - IC71C297X-1.25 EL. 640.5'
 - IC71C151X-1.25 EL. 639.5'
 - IC71C152X-1.25 EL. 639.5'
 - IC71C153X-1.25 EL. 639.5'
 - IC71C154X-1.25 EL. 639.5'
 - IC71C155X-1.25 EL. 639.5'
 - IC71C156X-1.25 EL. 639.5'
 - IC71C157X-1.25 EL. 639.5'
 - IC71C158X-1.25 EL. 639.5'
 - IC71C159X-1.25 EL. 639.5'
 - IC71C160X-1.25 EL. 639.5'
 - IC71C161X-1.25 EL. 639.5'
 - IC71C162X-1.25 EL. 639.5'
 - IC71C163X-1.25 EL. 639.5'
 - IC71C164X-1.25 EL. 639.5'
 - IC71C165X-1.25 EL. 639.5'
 - IC71C166X-1.25 EL. 639.5'
 - IC71C167X-1.25 EL. 639.5'
 - IC71C168X-1.25 EL. 639.5'
 - IC71C169X-1.25 EL. 639.5'
 - IC71C170X-1.25 EL. 639.5'
 - IC71C171X-1.25 EL. 639.5'
 - IC71C172X-1.25 EL. 639.5'
 - IC71C173X-1.25 EL. 639.5'
 - IC71C174X-1.25 EL. 639.5'
 - IC71C175X-1.25 EL. 639.5'
 - IC71C176X-1.25 EL. 639.5'
 - IC71C177X-1.25 EL. 639.5'
 - IC71C178X-1.25 EL. 639.5'
 - IC71C179X-1.25 EL. 639.5'
 - IC71C180X-1.25 EL. 639.5'
 - IC71C181X-1.25 EL. 639.5'
 - IC71C182X-1.25 EL. 639.5'
 - IC71C183X-1.25 EL. 639.5'
 - IC71C184X-1.25 EL. 639.5'
 - IC71C185X-1.25 EL. 639.5'
 - IC71C186X-1.25 EL. 639.5'
 - IC71C187X-1.25 EL. 639.5'
 - IC71C188X-1.25 EL. 639.5'
 - IC71C189X-1.25 EL. 639.5'
 - IC71C190X-1.25 EL. 639.5'
 - IC71C191X-1.25 EL. 639.5'
 - IC71C192X-1.25 EL. 639.5'
 - IC71C193X-1.25 EL. 639.5'
 - IC71C194X-1.25 EL. 639.5'
 - IC71C195X-1.25 EL. 639.5'
 - IC71C196X-1.25 EL. 639.5'
 - IC71C197X-1.25 EL. 639.5'
 - IC71C198X-1.25 EL. 639.5'
 - IC71C199X-1.25 EL. 639.5'
 - IC71C200X-1.25 EL. 639.5'

TERA
APERTURE
CARD

NUCLEAR SAFETY RELATED		REV.	DATE	BY	CHKD.	APPROVALS
REVISIONS						
0-24-84	CONSTRUCTION	SP33				
LIMITED CONSTRUCTION: AS NOTED						
PRELIMINARY NOT FOR CONSTRUCTION						
BIDDING PURPOSES						
DATE	RELEASED FOR	ENGR.				
	THE CLEVELAND ELECTRIC ILLUMINATING COMPANY					
	PERRY NUCLEAR POWER PLANT	UNITS 1 & 2				
ELECTRICAL						
CONDUIT LAYOUT						
CONTROL COMPLEX - SECTIONS AND DETAILS						
GILBERT ASSOCIATES, INC.						
ENGINEERS AND CONSULTANTS						
DRAWING APPROVALS						
DRAWING	INSTRUMENTAL	CIVIL	STRUCTURAL	ELECTRICAL		
DATE	AS NOTED	04 4 54 9	D-215-661	J		
NO.	04548-000	DRAWING NUMBER		REV.		

REV.	DATE	BY	CHKD.	APPROVALS
1				
2				
3				
4				
5				
6				
7				
8				
9				
10				
11				
12				
13				
14				
15				
16				
17				
18				
19				
20				
21				
22				
23				
24				
25				
26				
27				
28				
29				
30				
31				
32				
33				
34				
35				
36				
37				
38				
39				
40				
41				
42				
43				
44				
45				
46				
47				
48				
49				
50				
51				
52				
53				
54				
55				
56				
57				
58				
59				
60				
61				
62				
63				
64				
65				
66				
67				
68				
69				
70				
71				
72				
73				
74				
75				
76				
77				
78				
79				
80				
81				
82				
83				
84				
85				
86				
87				
88				
89				
90				
91				
92				
93				
94				
95				
96				
97				
98				
99				
100				

RIDS

812040169

