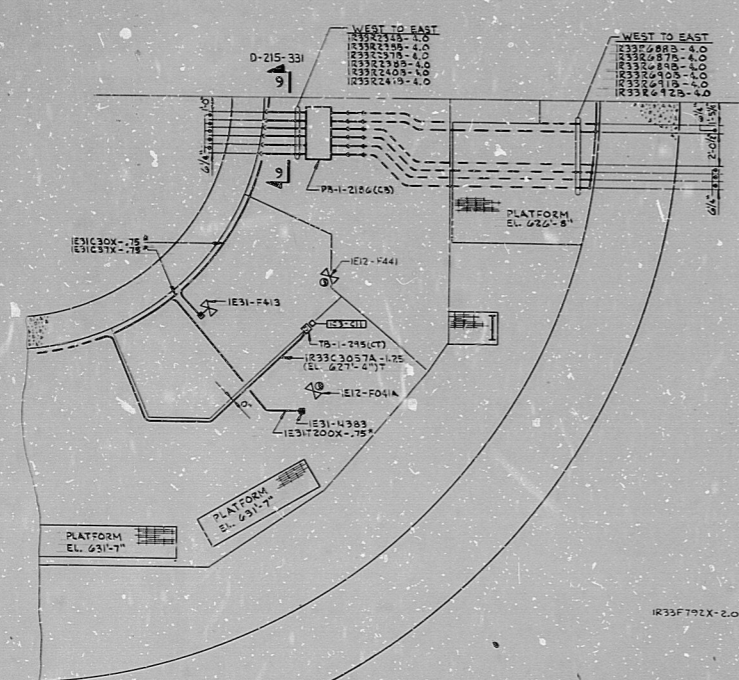
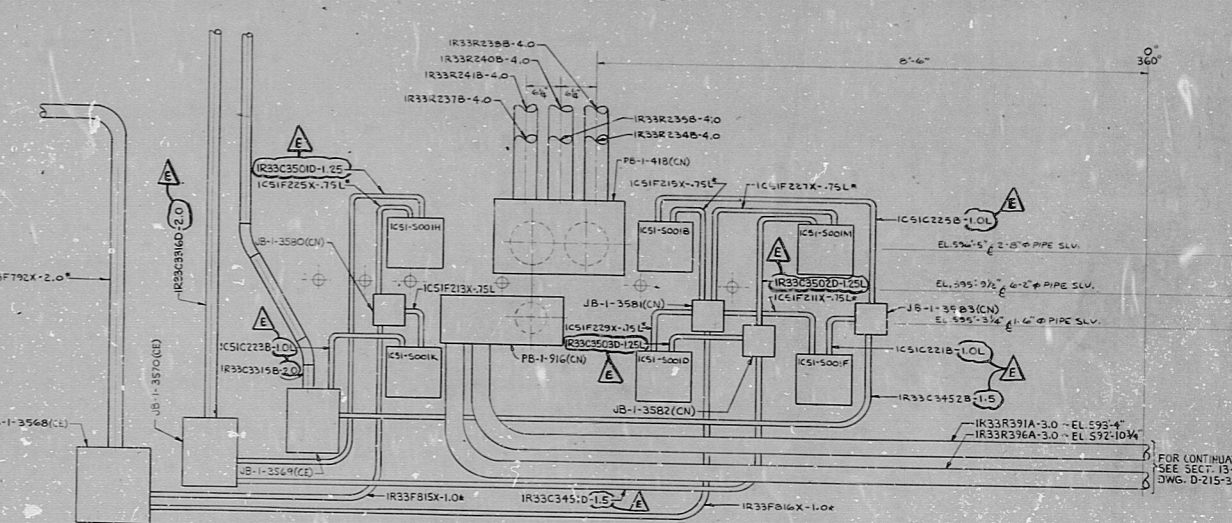


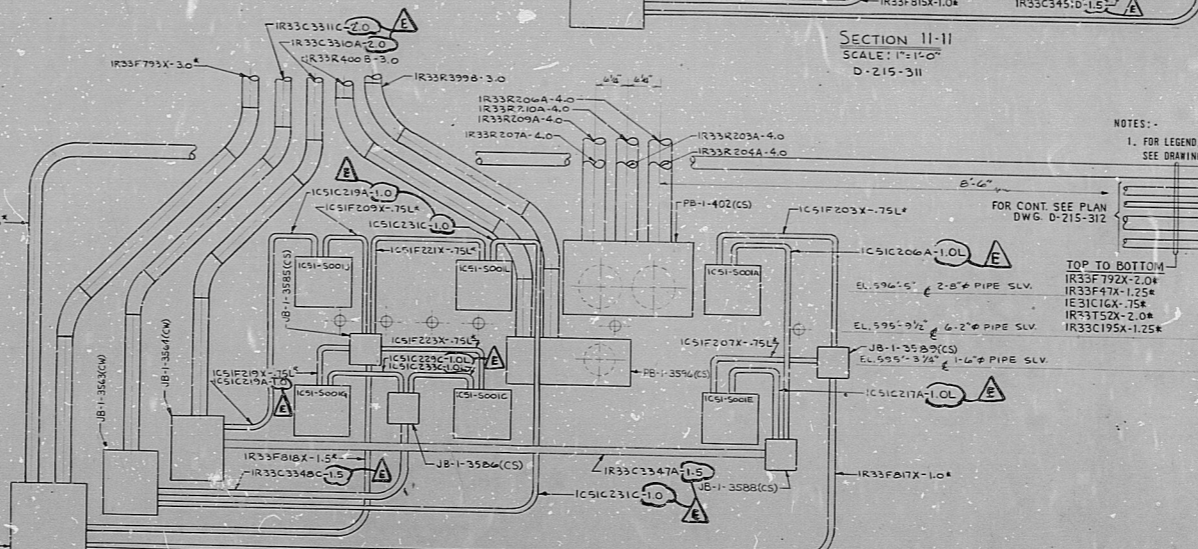
DETAIL "A"  
D-215-331 & D-215-332  
SCALE: 1/4" = 1'-0"



DETAIL "B"  
D-215-331



SECTION 11-11  
SCALE: 1/4" = 1'-0"  
D-215-311



SECTION 12-12  
SCALE: 1/4" = 1'-0"  
D-215-312

NOTES:  
1. FOR LEGEND, NOTES, REFERENCES, AND STANDARD DETAILS, SEE DRAWING D-215-001.

REVISIONS	DATE	BY	CHKD	APPROVAL
AS INDICATED				
(G) PLACES				
(D) PLACES				
(E) PLACES				
(F) PLACES				
(G) PLACES				
(H) PLACES				
(I) PLACES				
(J) PLACES				
(K) PLACES				

TERA APERTURE CARD

NUCLEAR SAFETY RELATED

REVISIONS	DATE	BY	CHKD	APPROVAL
AS INDICATED				
(G) PLACES				
(D) PLACES				
(E) PLACES				
(F) PLACES				
(G) PLACES				
(H) PLACES				
(I) PLACES				
(J) PLACES				
(K) PLACES				

CONSTRUCTION	DATE	BY	CHKD	APPROVAL
LIMITED CONSTRUCTION: AS NOTED				
PRELIMINARY NOT FOR CONSTRUCTION				
BIDDING PURPOSES				

DATE RELEASED FOR ENGR.

THE CLEVELAND ELECTRIC ILLUMINATING COMPANY UNIT 1

ELECTRICAL CONDUIT LAYOUT

SECTIONS AND DETAILS

REVISIONS	DATE	BY	CHKD	APPROVAL
AS INDICATED				
(G) PLACES				
(D) PLACES				
(E) PLACES				
(F) PLACES				
(G) PLACES				
(H) PLACES				
(I) PLACES				
(J) PLACES				
(K) PLACES				

SCALE: AS NOTED 04 4549 D-215-660

24549-000 DRAWING NUMBER

CND LYT REAC BLDG SECT AND DETAILS

R.DS

811204 9168

