

14

13

12

11

10

9

8

7

6

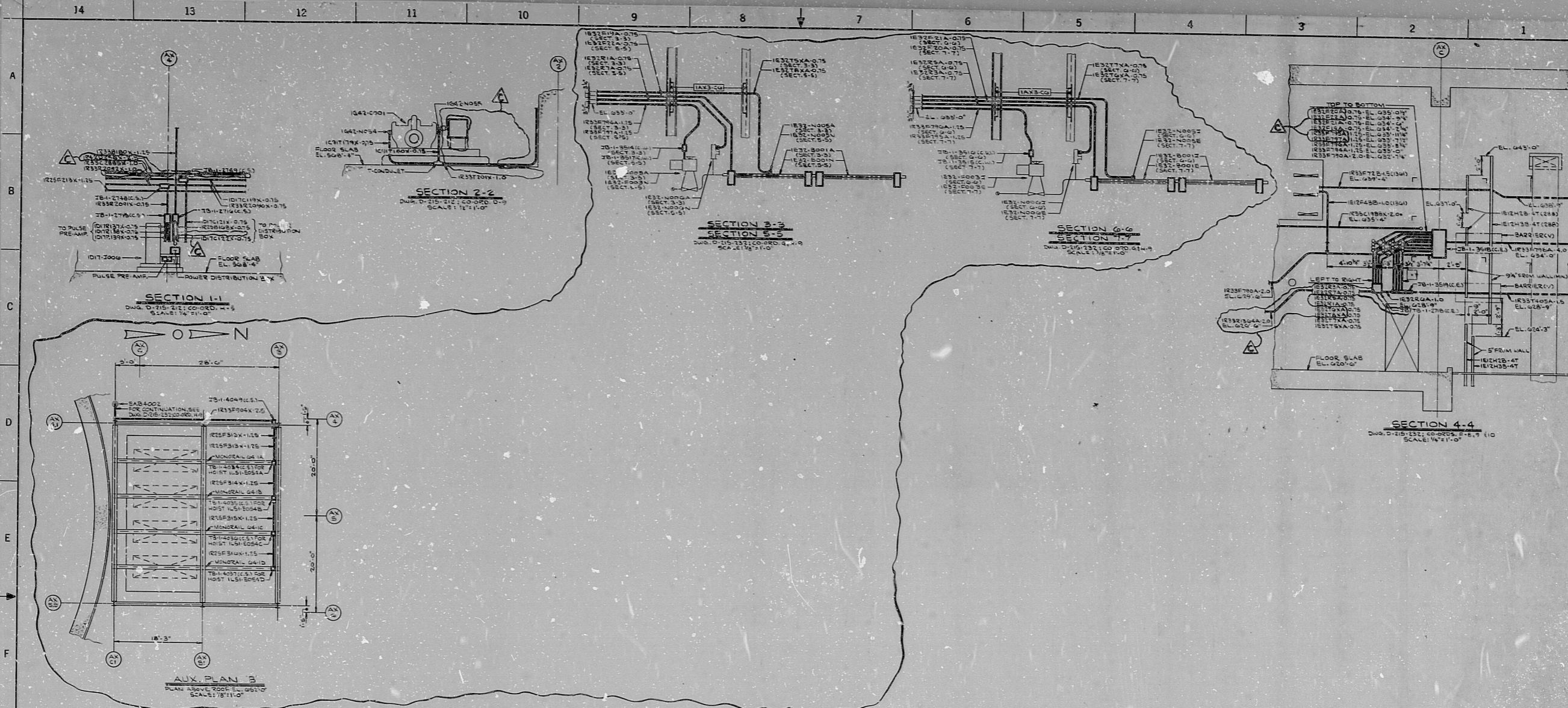
5

4

3

2

1



8.5"

11"

17"

22"

34"

NOTES:
 1. FOR LEGEND, NOTES, REFERENCES, AND STANDARD DETAILS, SEE DRAWING D-215-001.

NUCLEAR SAFETY RELATED

TERA APERTURE CARD

REVISIONS		NO. DATE MADE CHNG. APPROVALS	
3-10-58	CONSTRUCTION SP33		
	LIMITED CONSTRUCTION AS NOTED		
	PRELIMINARY NOT FOR CONSTRUCTION		
	BIDDING PURPOSES		
DATE	RELEASED FOR	ENGR.	
	THE CLEVELAND ELECTRIC ILLUMINATING COMPANY		
	PERRY NUCLEAR POWER PLANT	UNIT 1	
	ELECTRICAL		
	CONDUIT LAYOUT		
	SECTIONS AND DETAILS		
READING	GILBERT ASSOCIATES, INC.		
	ENGINEERS AND CONSULTANTS		
REVISIONS	ENGINEER APPROVALS	ENGINEER APPROVALS	ENGINEER APPROVALS
DATE	DATE	DATE	DATE
AS NOTED	04	4549	D-215-059
D-215-001			
	DRAWING NUMBER		REV.

CONDUIT LAYOUT SECTIONS AND DETAILS

34"

34"

R.D.S

8112040167

