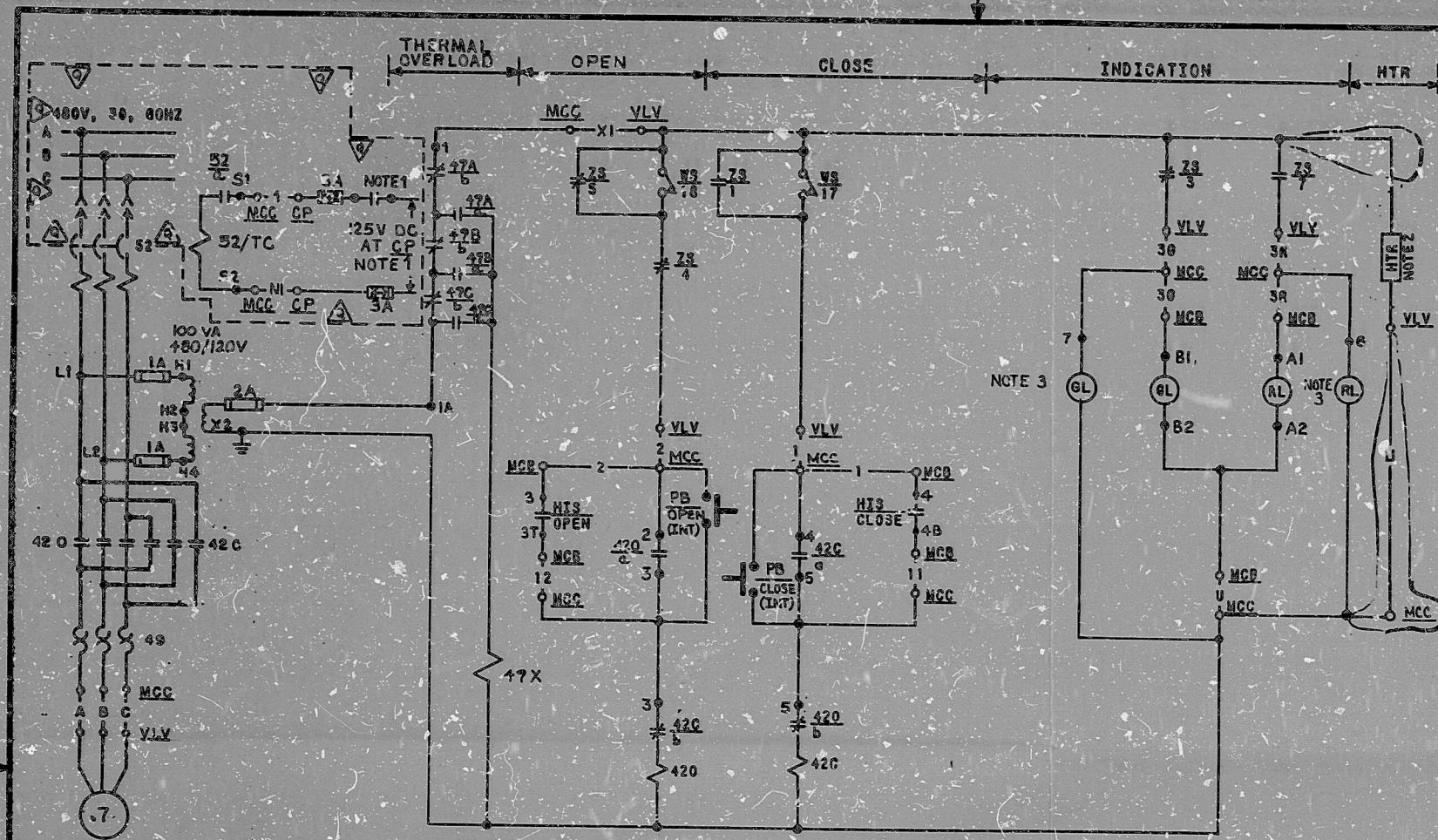


This drawing and the design it covers is the property of the Utilities which are participating in the SNUPPS Project. It is loaned on the borrower's express agreement that it will not be reproduced, copied, loaned, exhibited, or used except in the limited way and provide use permitted by the SNUPPS Utilitie to the borrower.



OPEN		CONTACT		POSITION	
OL	RL	NORM	CLOSE	OPEN	
1	1-1T	X	X		
3	1-3T			X	
2	1-2E	X	X		
4	1-4B			X	

CUTLER-HAMMER TYPE E30 JY3 WITH TWO KLA3 CONTACT BLOCKS

HAND INDICATING SWITCH HIS-SEE TABLE A- MOMENTARY CONTACT

LIMIT SWITCH CONTACT DEVELOPMENT			
ROTOR	VALVE POSITION		FUNCTION
	FULL OPEN	FULL CLOSED	
OPEN 1			BYPASS CRT
2			SPARE
3			IMB LIGHT
4			OPEN CRT
5			BYPASS CRT
6			COMPUTER
7			IMB LIGHT
8			NOT USED
CLOSE 9			SPARE
10			SPARE
11			SPARE
12			SPARE
13			SPARE
14			SPARE
15			SPARE
16			SPARE
VS 17			TORQUE SW OPENS ON HI CLOSING TORQUE
18			TORQUE SW OPENS ON HI OPENING TORQUE

SOLID BAR INDICATES CONTACT CLOSED

TABLE C

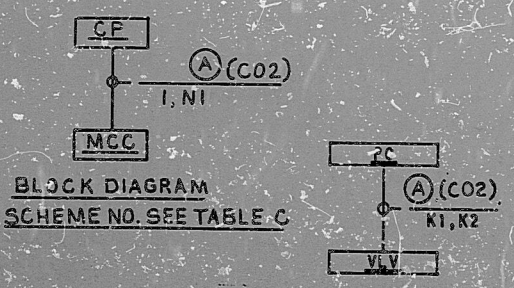
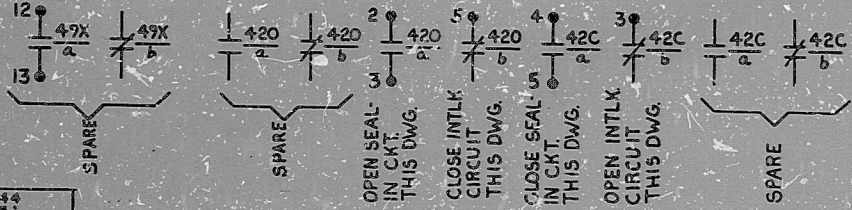
RELAY & CONTACT NO.	K4134
CONT. PNL. LOCATION-CP	NFO37C
MCC LOCATION-MCC	NGO4CPF2
SCHEME NO.	4BGK13A

TABLE B

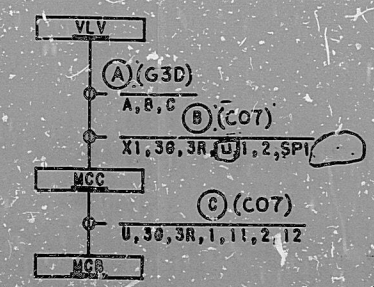
COMPUTER REF. DWG.	J-106-0115
BECHTEL V.P. NO.	8628104
COMPUTER POINT	8628104
VALVE NO.-VLV	86HV8104
COMPUTER LOCATION-PC	R3053C
COMPUTER SCHEME NO.	866813A

TABLE A

HIS NUMBER	86HI8104
MCC LOCATION-MCC	NGO4CPF2
HIS LOCATION-MCB	RLO0?
VALVE NO.-VLV	86HV8104
SCHEME NO.	866813A



PLANT COMPUTER BLOCK DIAGRAM SCHEME NO.-SEE TABLE B



BLOC DIAGRAM SCHEME NO.-SEE TABLE A

REFERENCE DWG: M-028605

TI APERTURE CARD

- INDICATING LIGHTS FOR STARTER ARE GOULD CLASS H33.
  - HEATER, 40 WATTS, MANUFACTURER TYPE WARD LEONARD P/N405 OR EQUAL.
  - FOR DETAILS, SEE BECHTEL V.P. NO. 8104-0117 RELAY & CONTACT NO. SEE TABLE.
- NOTES:

REV	DATE	BY	CHK	APP	REVISION
1					ISSUED FOR CONSTRUCTION
2					REVISED
3					REVISED
4					REVISED

BECHTEL  
GAITHERSBURG, MARYLAND

SNUPPS

SCHEMATIC DIAGRAM  
BORIC ACID FILTER TO  
CHARGING PUMP VALVE

QUALITY DESIGN NO. REV

JOB NO. 10408 BECHTEL DRAWING NO. REV  
E-038613 (0) ©

DATE OPERATOR: Mark... SUPERVISOR: ...



I certify that the image contained on this frame was made in the normal and regular course of business, on the date stated below and that it is an accurate reproduction of the document(s) submitted to Micrographics.

DATE OPERATOR: Mark... SUPERVISOR: ...

8410040425

PDR RIDS

