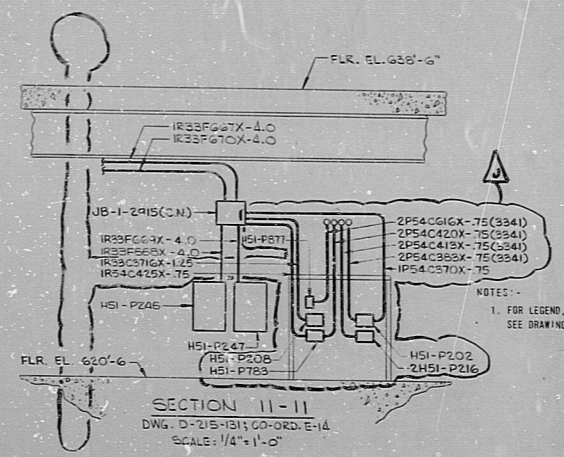
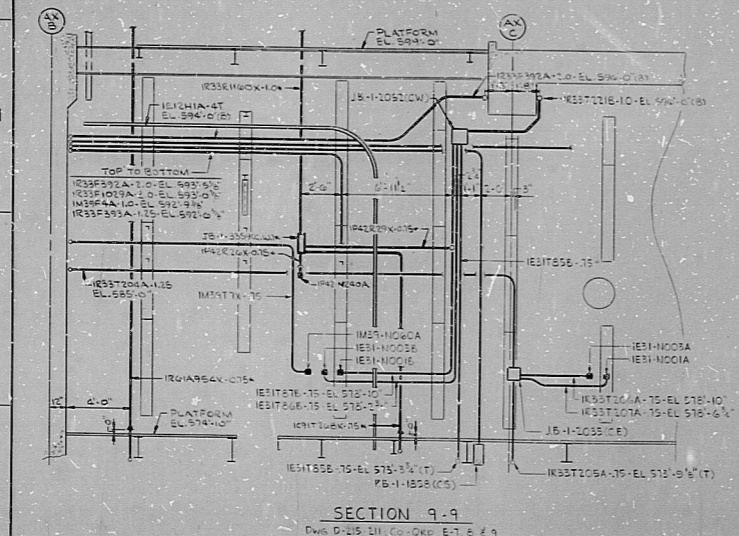
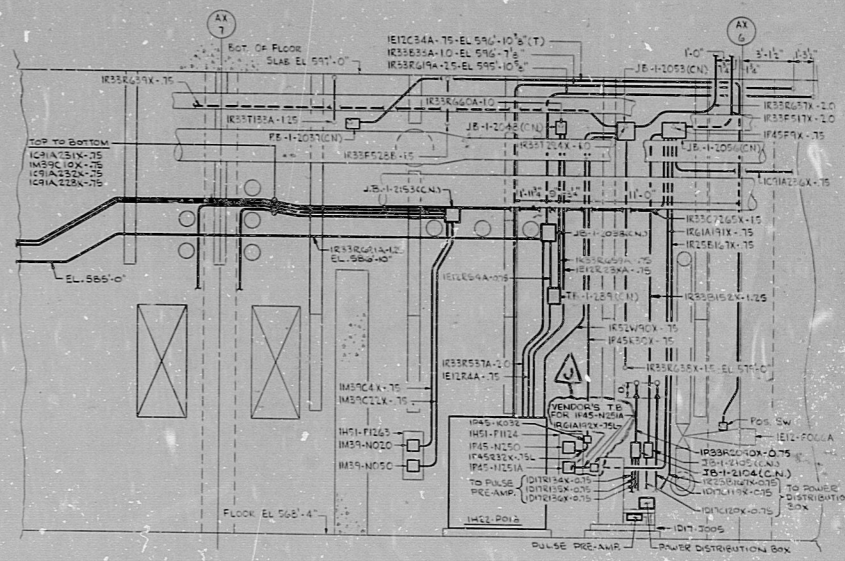
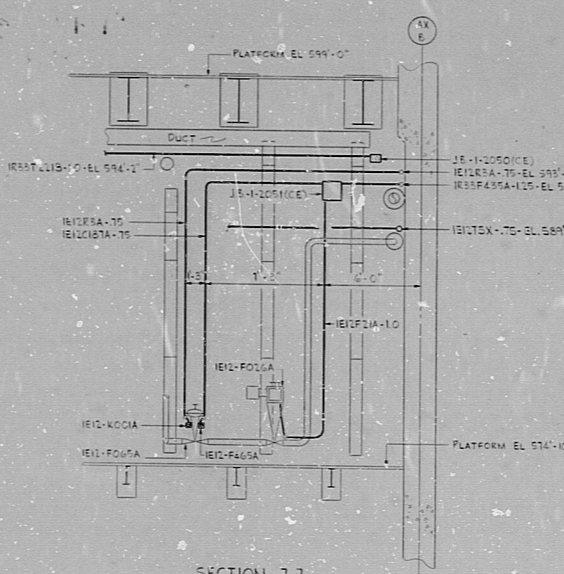
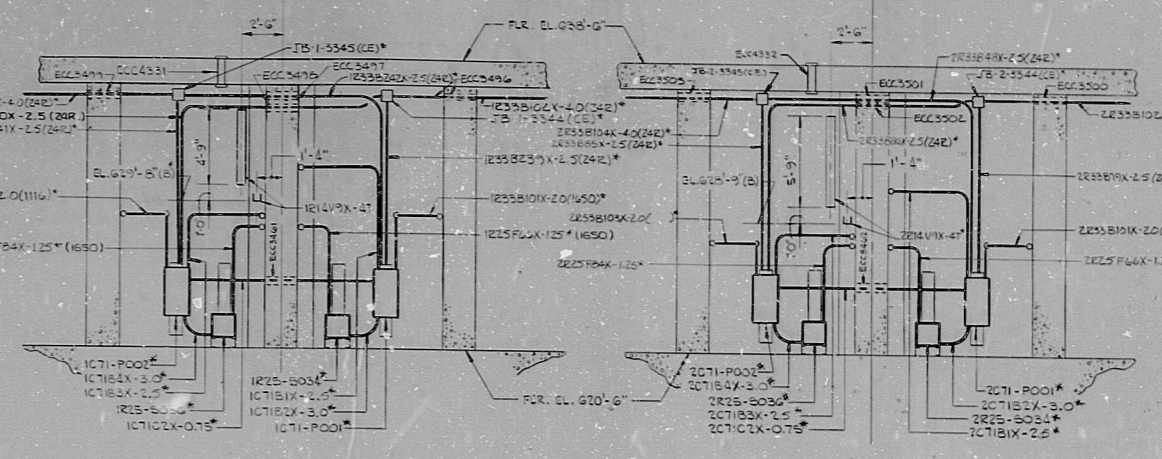
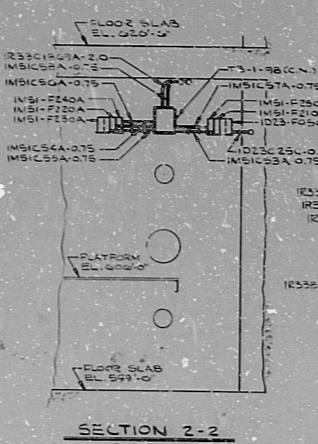
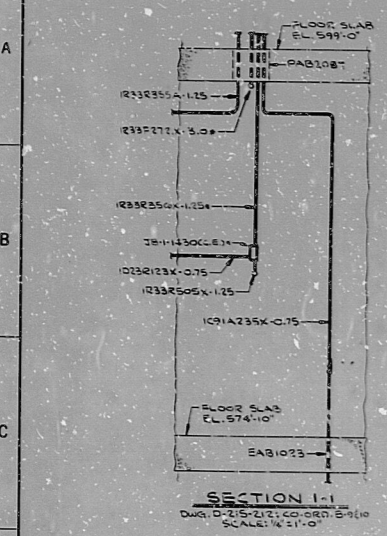


14 13 12 11 10 9 8 7 6 5 4 3 2 1

22" 17" 11" 8.5" 11" 17" 22"

22" 17" 11" 8.5" 11" 17" 22"



TERA APERTURE CARD

NUCLEAR SAFETY RELATED

NOTES: 1. FOR LEGEND, NOTES, REFERENCES, AND STANDARD DETAILS, SEE DRAWING D-215-001.

REVISIONS

NO.	DATE	DESCRIPTION	BY	CHKD.
1				
2				
3				
4				
5				
6				
7				
8				
9				
10				
11				
12				
13				
14				
15				
16				
17				
18				
19				
20				
21				
22				
23				
24				
25				
26				
27				
28				
29				
30				
31				
32				
33				
34				
35				
36				
37				
38				
39				
40				

NO.		DATE	ISSUED	BY	CHKD.
REVISIONS					
CONSTRUCTION					
LIMITED CONSTRUCTION: AS NOTED					
PRELIMINARY NOT FOR CONSTRUCTION BIDDING PURPOSES					
DATE		RELEASED FOR		ENGR.	
THE CLEVELAND ELECTRIC ILLUMINATING COMPANY					
PERRY NUCLEAR POWER PLANT UNITS 1 & 2					
ELECTRICAL CONDUIT LAYOUT					
SECTIONS AND DETAILS					
DRAWING NO. D-215-131-00-ORD. E-1.1					
SCALE: 1/4" = 1'-0"					
PROJECT NO. 4549					
DRAWING NUMBER: D-215-652					
REV. J					
DATE: 04-19-65					
SCALE: 1/4" = 1'-0"					

RIDS

812040156

