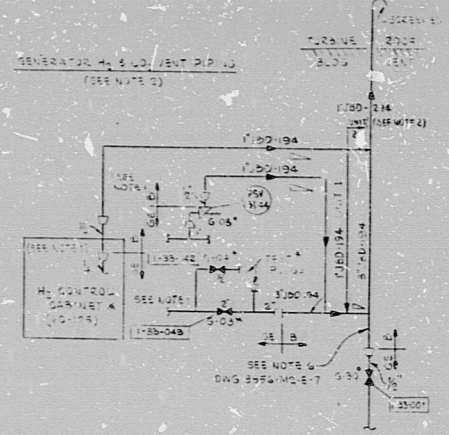


UNCONTROLLED DOCUMENT
FOR REFERENCE ONLY



NOTES

- GENERAL ELECTRIC TO SUPPLY ALL BUNA AND EQUIPMENT TO GENERATOR. FOR DETAILS SEE THE Dwg. H-106238 (SHEET) VENDOR PRINT BSA-M-106238-71.
- VENTING FOR UNIT 2 IDENTICAL, EXCEPT VALVE NOS. AS NOTED.
- MISC. VALVE NUMBERS INCLUDED ON THIS Dwg. 0-33-002 THROUGH 0-33-004. NO DELETIONS AND 0-33-001, 0-33-002, 0-33-003, 0-33-004.

REFERENCE DRAWINGS

GEN. H2 SUPPLY	CL. NO.
H-106238	E-106238

REVISION	DATE	BY	CHKD	APP'D
1	11-15-58
2	11-15-58
3	11-15-58
4	11-15-58
5	11-15-58
6	11-15-58
7	11-15-58
8	11-15-58
9	11-15-58
10	11-15-58

PENNSYLVANIA POWER & LIGHT COMPANY
ALLENTOWN, PENNSYLVANIA
SUSQUEHANNA STEAM ELECTRIC STATION - UNIT 1, UNIT 2
BEHTEL - SAN FRANCISCO

P&L ID
BULK HYDROGEN

JOB NO.	DRAWING NO.	REV.
8856	M-133	11

E-106238

PRO
APERTURE
CARD

RIDS

8305250330

