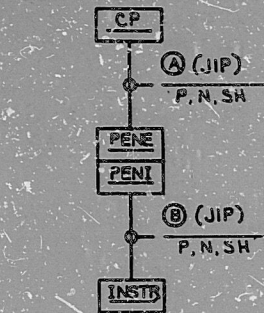
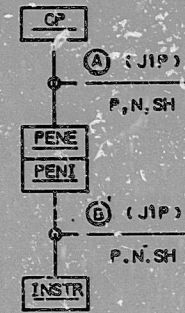


This drawing and the design it covers is the property of the Utilities which are participating in the SNUPPS Project. It is loaned to the borrower's express agreement that it will not be reproduced, copied, loaned, exhibited, or used except in the limited way and private use permitted by written consent given by the SNUPPS Utilities to the borrower.

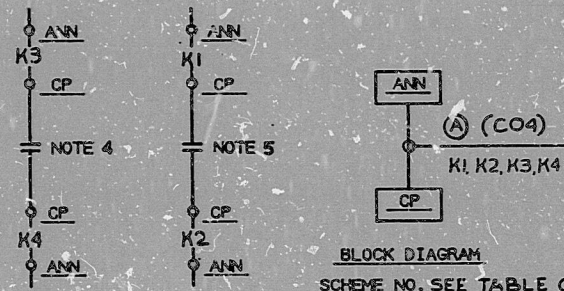
REF. DWGS:
M-028803



BLOCK DIAGRAM
SCHEME NO. SEE TABLE A



BLOCK DIAGRAM
SCHEME NO. SEE TABLE B



BLOCK DIAGRAM
SCHEME NO. SEE TABLE C

- 8. CONTACT OPENS WHEN PRESSURIZER RELIEF VALVE IS FULLY OPEN SEE DWG. E-038833.
- 7. CONTACT OPENS WHEN SWITCH IS IN "BLOCK" POSITION. FOR CONTACT DEVELOPMENT, SEE DWG. E-038833
- 6. DELETED
- 5. BISTABLE CONTACT OPENS ON RCP THERMAL BARRIER COOLING LOW FLOW, LOOP REF DWG SEE TABLE C
- 4. BISTABLE CONTACT OPEN ON RCP THERMAL BARRIER COOLING HIGH FLOW LOOP REF DWG SEE TABLE C
- 3. DELETED.
- 2. DELETED.
- 1. DELETED.

TABLE A

SCHEME NO.	INSTRUMENT INSTR.	PENETRATION PEN.	CONTROL PNL LSC.-CP	INSTR. LOOP DWG BECHTEL V.P. NO.
588I28G	BBFT33	ZNE291	RP053EA	J-110-0720
588I28H	BBFT34	ZNE291	RP053EA	J-110-0721
688I28G	BBFT35	ZSE255	RP053EB	J-110-0726
688I28H	BBFT36	ZSE255	RP053EB	J-110-0727
588I28C	BBFT25	ZNE271	RP053EA	J-110-0716
588I28D	BBFT26	ZNE271	RP053EA	J-110-0717
688I28C	BBFT27	ZSE255	RP053EB	J-110-0722
688I28D	BBFT28	ZSE255	RP053EB	J-110-0723
588I28E	BBFT29	ZNE291	RP053EA	J-110-0718
588I28F	BBFT30	ZNE291	RP053EA	J-110-0719
688I28E	BBFT31	ZSE255	RP053EB	J-110-0724
688I28F	BBFT32	ZSE255	RP053EB	J-110-0725

COMPONENT COOLING WATER HIGH/LOW FLOW LOOPS

TABLE B

LOOP REF DWG.	J-110-0708	J-110-0709	J-110-0710	J-110-0711
FLOW SW NO.	BBFS17	BBFS18	BBFS19	BBFS20
CONT PNL LOC. CP	RP053AC	RP053AC	RP053AC	RP053AC
PENETRATION NO. PEN	ZNE287	ZNE287	ZNE297	ZNE287
INSTR NO. INSTR.	BBFT17	BBFT18	BBFT19	BBFT20
SCHEME NO.	188I28A	188I28B	188I28C	188I28D

COMPONENT COOLING WATER FLOW TRANSMITTER

DCP M-37

TABLE C

LOOP REF DWG.	J-110-0708	J-110-0709	J-110-0710	J-110-0711
ANN REF DWG, BECHTEL V.P. NO.	J-108-0194	J-108-0194	J-108-0194	J-108-0194
ANNUNCIATOR POINT	BBFAH17	BBFAH18	BBFAH19	BBFAH20
ANNUNCIATOR LOC. ANN	RK045A	RK045A	RK045A	RK045A
FLOW SW NO.	BBFS17	BBFS18	BBFS19	BBFS20
CONT PNL LOC. CP	RP053AC	RP053AC	RP053AC	RP053AC
SCHEME REF DWG	188R28A	188R28B	188R28C	188R28D

NOTES:

TI
APERTURE
CARD

COMPONENT COOLING WATER HIGH/LOW FLOW

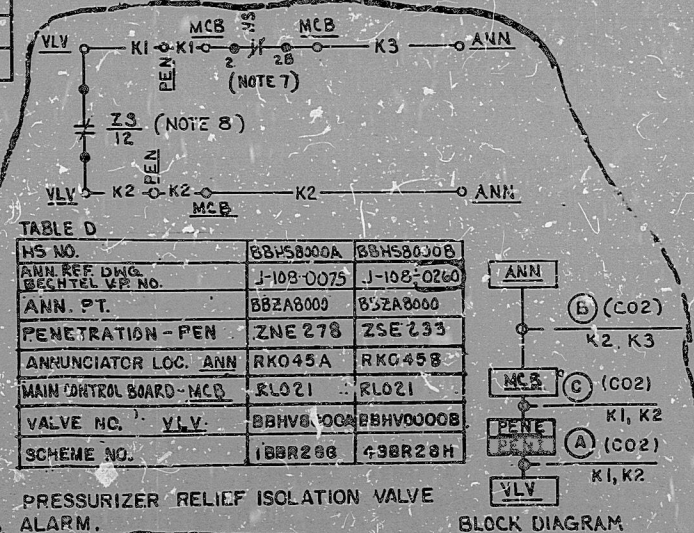
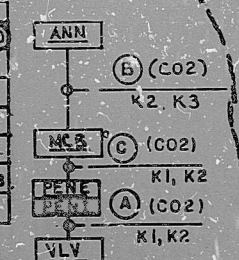


TABLE D

HS NO.	88858000A	88858000B
ANN REF DWG BECHTEL V.P. NO.	J-108-0075	J-108-0260
ANN. PT.	BBZA8000	BBZA8000
PENETRATION - PEN	ZNE278	ZSE233
ANNUNCIATOR LOC. ANN	RK045A	RK045B
MAIN CONTROL BOARD-MCB	RLO21	RLO21
VALVE NO. VLV.	BBHV0008	BBHV0008
SCHEME NO.	188R28B	438R28H



BLOCK DIAGRAM
SCHEME NO. SEE TABLE D

REVIEW LEVEL 3

NO.	DATE	REVISIONS	BY	CHE	DESIGN	DATE	REV

BECHTEL
GAINESBURG, MARYLAND
SNUPPS

SCHEMATIC DIAGRAM
INSTRUMENTATION AND ANNUNCIATION

UTILITY DRAWING NO.		REV

JOB NO.		BECHTEL DRAWING NO.	REV

DRAWING APPLICABLE TO UNITS: 1 2 3 4 5 6 7 8

I certify that the image contained on this frame was made in the normal and regular course of business, on the date stated below and that it is an accurate reproduction of the document(s) submitted to Micrographics.

8410040370

PDR RIDS

