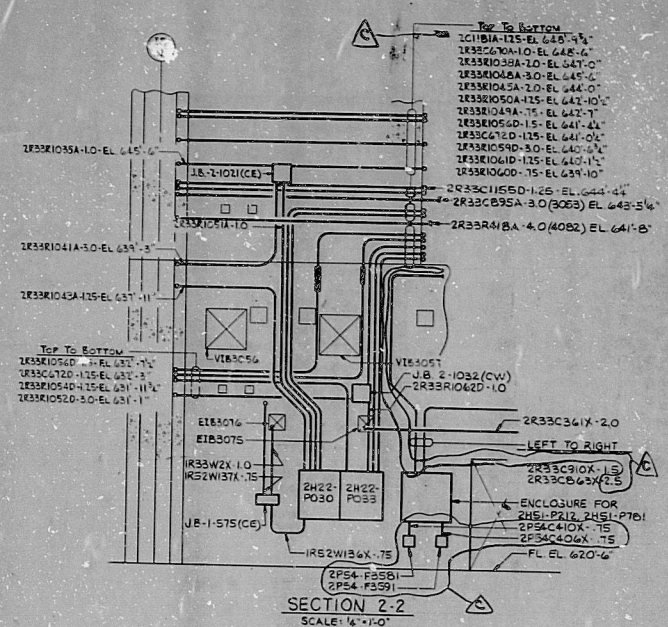
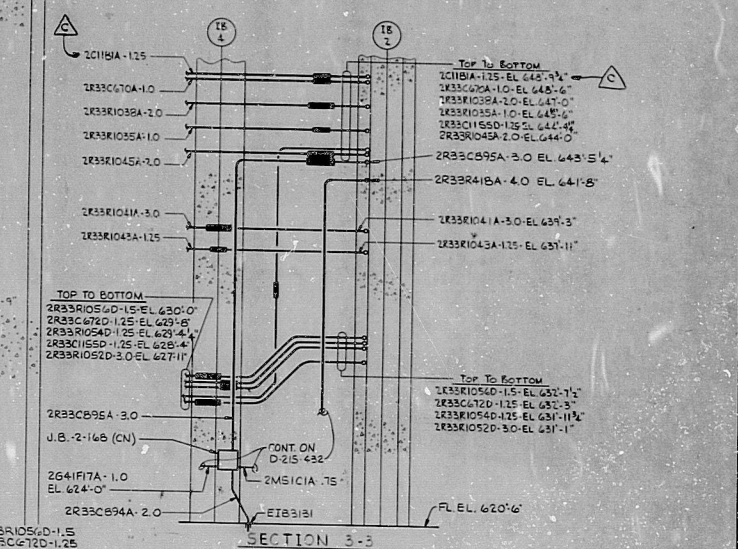


SECTION 1-1  
SCALE: 1/4" = 1'-0"  
D-215-442



SECTION 2-2  
SCALE: 1/4" = 1'-0"  
D-215-432, D-215-442



SECTION 3-3  
SCALE: 1/4" = 1'-0"  
D-215-432, D-215-442

- NOTES:
1. FOR LEGEND, NOTES, REFERENCES, AND STANDARD DETAILS, SEE DWG. D-215-001.
  2. THIS DRAWING TO BE WORKED IN CONJUNCTION WITH DWGS. D-215-437 AND D-215-441.
  3. THIS DRAWING TO BE WORKED IN CONJUNCTION WITH ELECTRICAL CONDUIT SUPPORT DWGS. D-215-442, SHEETS C25 THROUGH C38.

TERA  
APERTURE  
CARD

NUCLEAR SAFETY RELATED

REVISIONS			
NO.	DATE	BY	APP. / DESCRIPTION
1			CONSTRUCTION 5/23/53
2			LIMITED CONSTRUCTION: AS NOTED
3			PRELIMINARY NOT FOR CONSTRUCTION
4			BIDDING PURPOSES
DATE		RELEASED FOR	ENGR.
			THE CLEVELAND ELECTRIC ILLUMINATING COMPANY
			PERRY NUCLEAR POWER PLANT UNIT 1
ELECTRICAL CONDUIT LAYOUT			
PENETRATION ACCESS AREA - SECTIONS AND DETAILS			
READING	PA.	GILBERT ASSOCIATES, INC.	
ENGINEERS AND CONSULTANTS			
DRAWING	ENGINEER	APPROVAL	
DATE	NO.	DATE	NO.
04	4549	04	4549
D-215-444		REV	
DRAWING NUMBER		REV	

PENT ACCESS AREA SECTIONS & DETAIL

RIDS

8112040101

