

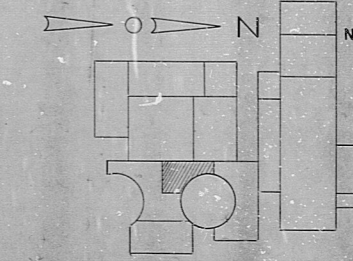
VALVE NO.	BOX NO.	SOLENOID COIL NO.	LIMIT SWITCH NO.
G41-F10A	JB-1-186	N/A	IB41C00X
G41-F175A	JB-1-208B	N/A	IB41C00X
G41-F200A	JB-1-288A	N/A	IB41C00X
G41-F200B	JB-1-288B	N/A	IB41C00X
G41-F100A	JB-1-186	N/A	IB41C00X
G41-F100B	JB-1-186	N/A	IB41C00X
G41-F100C	JB-1-186	N/A	IB41C00X
G41-F100D	JB-1-186	N/A	IB41C00X
G41-F100E	JB-1-186	N/A	IB41C00X
G41-F100F	JB-1-186	N/A	IB41C00X
G41-F100G	JB-1-186	N/A	IB41C00X
G41-F100H	JB-1-186	N/A	IB41C00X
G41-F100I	JB-1-186	N/A	IB41C00X
G41-F100J	JB-1-186	N/A	IB41C00X
G41-F100K	JB-1-186	N/A	IB41C00X
G41-F100L	JB-1-186	N/A	IB41C00X
G41-F100M	JB-1-186	N/A	IB41C00X
G41-F100N	JB-1-186	N/A	IB41C00X
G41-F100O	JB-1-186	N/A	IB41C00X
G41-F100P	JB-1-186	N/A	IB41C00X
G41-F100Q	JB-1-186	N/A	IB41C00X
G41-F100R	JB-1-186	N/A	IB41C00X
G41-F100S	JB-1-186	N/A	IB41C00X
G41-F100T	JB-1-186	N/A	IB41C00X
G41-F100U	JB-1-186	N/A	IB41C00X
G41-F100V	JB-1-186	N/A	IB41C00X
G41-F100W	JB-1-186	N/A	IB41C00X
G41-F100X	JB-1-186	N/A	IB41C00X
G41-F100Y	JB-1-186	N/A	IB41C00X
G41-F100Z	JB-1-186	N/A	IB41C00X

CONDUIT NO.	VALVE NO.	SOLENOID COIL NO.	LIMIT SWITCH NO.
IP42F27A-1.0	JB-1-136	N/A	IB41C00X
IP42F27B-1.0	JB-1-136	N/A	IB41C00X
IP42F27C-1.0	JB-1-136	N/A	IB41C00X
IP42F27D-1.0	JB-1-136	N/A	IB41C00X
IP42F27E-1.0	JB-1-136	N/A	IB41C00X
IP42F27F-1.0	JB-1-136	N/A	IB41C00X
IP42F27G-1.0	JB-1-136	N/A	IB41C00X
IP42F27H-1.0	JB-1-136	N/A	IB41C00X
IP42F27I-1.0	JB-1-136	N/A	IB41C00X
IP42F27J-1.0	JB-1-136	N/A	IB41C00X
IP42F27K-1.0	JB-1-136	N/A	IB41C00X
IP42F27L-1.0	JB-1-136	N/A	IB41C00X
IP42F27M-1.0	JB-1-136	N/A	IB41C00X
IP42F27N-1.0	JB-1-136	N/A	IB41C00X
IP42F27O-1.0	JB-1-136	N/A	IB41C00X
IP42F27P-1.0	JB-1-136	N/A	IB41C00X
IP42F27Q-1.0	JB-1-136	N/A	IB41C00X
IP42F27R-1.0	JB-1-136	N/A	IB41C00X
IP42F27S-1.0	JB-1-136	N/A	IB41C00X
IP42F27T-1.0	JB-1-136	N/A	IB41C00X
IP42F27U-1.0	JB-1-136	N/A	IB41C00X
IP42F27V-1.0	JB-1-136	N/A	IB41C00X
IP42F27W-1.0	JB-1-136	N/A	IB41C00X
IP42F27X-1.0	JB-1-136	N/A	IB41C00X
IP42F27Y-1.0	JB-1-136	N/A	IB41C00X
IP42F27Z-1.0	JB-1-136	N/A	IB41C00X

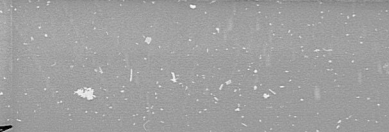
CONDUIT NO.	VALVE NO.	SOLENOID COIL NO.	LIMIT SWITCH NO.
IP42F28A-1.0	JB-1-136	N/A	IB41C00X
IP42F28B-1.0	JB-1-136	N/A	IB41C00X
IP42F28C-1.0	JB-1-136	N/A	IB41C00X
IP42F28D-1.0	JB-1-136	N/A	IB41C00X
IP42F28E-1.0	JB-1-136	N/A	IB41C00X
IP42F28F-1.0	JB-1-136	N/A	IB41C00X
IP42F28G-1.0	JB-1-136	N/A	IB41C00X
IP42F28H-1.0	JB-1-136	N/A	IB41C00X
IP42F28I-1.0	JB-1-136	N/A	IB41C00X
IP42F28J-1.0	JB-1-136	N/A	IB41C00X
IP42F28K-1.0	JB-1-136	N/A	IB41C00X
IP42F28L-1.0	JB-1-136	N/A	IB41C00X
IP42F28M-1.0	JB-1-136	N/A	IB41C00X
IP42F28N-1.0	JB-1-136	N/A	IB41C00X
IP42F28O-1.0	JB-1-136	N/A	IB41C00X
IP42F28P-1.0	JB-1-136	N/A	IB41C00X
IP42F28Q-1.0	JB-1-136	N/A	IB41C00X
IP42F28R-1.0	JB-1-136	N/A	IB41C00X
IP42F28S-1.0	JB-1-136	N/A	IB41C00X
IP42F28T-1.0	JB-1-136	N/A	IB41C00X
IP42F28U-1.0	JB-1-136	N/A	IB41C00X
IP42F28V-1.0	JB-1-136	N/A	IB41C00X
IP42F28W-1.0	JB-1-136	N/A	IB41C00X
IP42F28X-1.0	JB-1-136	N/A	IB41C00X
IP42F28Y-1.0	JB-1-136	N/A	IB41C00X
IP42F28Z-1.0	JB-1-136	N/A	IB41C00X

- NOTES:
- FOR LEGEND, NOTES, REFERENCES, AND STANDARD DETAILS, SEE DWG. D-215-001.
  - THIS DRAWING TO BE WORKED IN CONJUNCTION WITH THE FOLLOWING ELECTRICAL CONDUIT SUPPORT DWG. SS-215-421, SHEETS C1, C2, C3, C4, C5, C6, C7, C8, C9, C10, AND C11.
  - CONDUITS TURNING UP, CONTINUED ON DWG. D-215-431.
  - ALL THESE NON-NUCLEAR SAFETY RELATED CONDUITS TO BE SEISMICALLY SUPPORTED. THREADED ROD CRITERIA MAY NOT BE USED.

SECTION 2-2  
SCALE: 1/4" = 1'-0"



SECTION 1-1  
SCALE: 1/4" = 1'-0"



TERA APERTURE CARD

NUCLEAR SAFETY RELATED

CONSTRUCTION	3P 33	✓
LIMITED CONSTRUCTION	AS NOTED	
PRELIMINARY NOT FOR CONSTRUCTION		
BIDDING PURPOSES		
DATE	RELEASED FOR	ENGR.
THE CLEVELAND ELECTRIC ILLUMINATING COMPANY		
PERRY NUCLEAR POWER PLANT		
ELECTRICAL		
CONDUIT LAYOUT		
INTERMEDIATE BUILDING - NORTH - EL. 519'-0"		
REVISIONS	GILBERT ASSOCIATES, INC.	
NO.	DATE	BY
1	04/5/59	WJ
2	04/5/59	WJ
3	04/5/59	WJ
4	04/5/59	WJ
5	04/5/59	WJ
6	04/5/59	WJ
7	04/5/59	WJ
8	04/5/59	WJ
9	04/5/59	WJ
10	04/5/59	WJ
11	04/5/59	WJ
12	04/5/59	WJ
13	04/5/59	WJ
14	04/5/59	WJ
15	04/5/59	WJ
16	04/5/59	WJ
17	04/5/59	WJ
18	04/5/59	WJ
19	04/5/59	WJ
20	04/5/59	WJ
21	04/5/59	WJ
22	04/5/59	WJ
23	04/5/59	WJ
24	04/5/59	WJ
25	04/5/59	WJ
26	04/5/59	WJ
27	04/5/59	WJ
28	04/5/59	WJ
29	04/5/59	WJ
30	04/5/59	WJ
31	04/5/59	WJ
32	04/5/59	WJ
33	04/5/59	WJ
34	04/5/59	WJ
35	04/5/59	WJ
36	04/5/59	WJ
37	04/5/59	WJ
38	04/5/59	WJ
39	04/5/59	WJ
40	04/5/59	WJ
41	04/5/59	WJ
42	04/5/59	WJ
43	04/5/59	WJ
44	04/5/59	WJ
45	04/5/59	WJ
46	04/5/59	WJ
47	04/5/59	WJ
48	04/5/59	WJ
49	04/5/59	WJ
50	04/5/59	WJ
51	04/5/59	WJ
52	04/5/59	WJ
53	04/5/59	WJ
54	04/5/59	WJ
55	04/5/59	WJ
56	04/5/59	WJ
57	04/5/59	WJ
58	04/5/59	WJ
59	04/5/59	WJ
60	04/5/59	WJ
61	04/5/59	WJ
62	04/5/59	WJ
63	04/5/59	WJ
64	04/5/59	WJ
65	04/5/59	WJ
66	04/5/59	WJ
67	04/5/59	WJ
68	04/5/59	WJ
69	04/5/59	WJ
70	04/5/59	WJ
71	04/5/59	WJ
72	04/5/59	WJ
73	04/5/59	WJ
74	04/5/59	WJ
75	04/5/59	WJ
76	04/5/59	WJ
77	04/5/59	WJ
78	04/5/59	WJ
79	04/5/59	WJ
80	04/5/59	WJ
81	04/5/59	WJ
82	04/5/59	WJ
83	04/5/59	WJ
84	04/5/59	WJ
85	04/5/59	WJ
86	04/5/59	WJ
87	04/5/59	WJ
88	04/5/59	WJ
89	04/5/59	WJ
90	04/5/59	WJ
91	04/5/59	WJ
92	04/5/59	WJ
93	04/5/59	WJ
94	04/5/59	WJ
95	04/5/59	WJ
96	04/5/59	WJ
97	04/5/59	WJ
98	04/5/59	WJ
99	04/5/59	WJ
100	04/5/59	WJ

RIDS

8112040069

