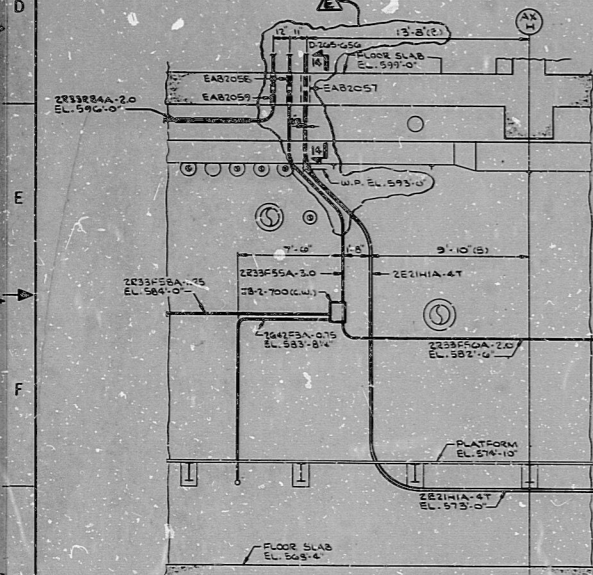


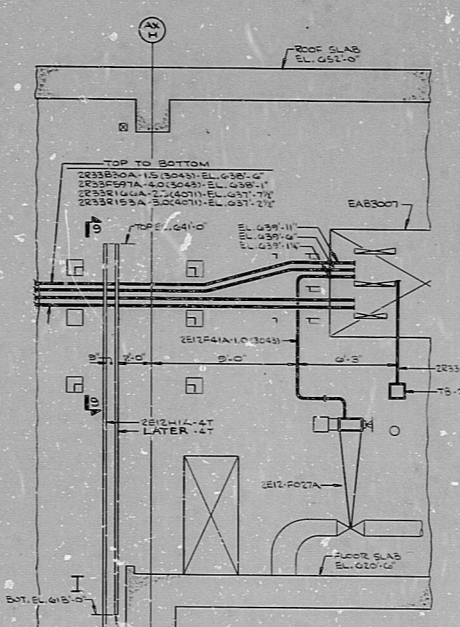
SECTION 1-1
 DWG. D-265-G51, CO. ORD. D-118147
 SCALE: 1/4" = 1'-0"

SECTION 2-2
 DWG. D-265-G51, CO. ORD. D-118147
 SCALE: 1/4" = 1'-0"

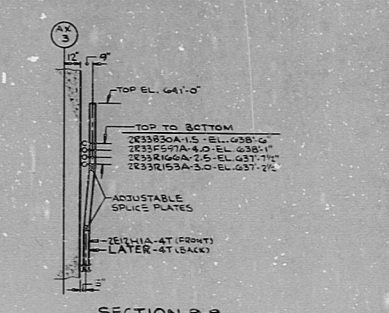
SECTION 3-3
 DWG. D-265-G51, CO. ORD. D-118147
 SCALE: 1/4" = 1'-0"



SECTION 4-4
 DWG. D-265-G51, CO. ORD. D-118147
 SCALE: 1/4" = 1'-0"



SECTION 5-3
 DWG. D-265-G51, CO. ORD. D-118147
 SCALE: 1/4" = 1'-0"



SECTION 5-5
 DWG. D-265-G51, CO. ORD. D-118147
 SCALE: 1/4" = 1'-0"

① TYPICAL CONDUIT INSTALLATION FOR VALVE SOLENOID LIMIT SWITCHES

CLOSED LIM. SW.
 SOLENOID
 OPEN LIM. SW.
 CONDUIT (UNLESS OTHERWISE NOTED ON CHART)

SEE DWG. D-265-212

VALVE	BOX	SOLENOID NO.	LIMIT SWITCH NO.
MPL. NO.	No.	CND. NO.	CND. NO. (OPEN) CND. NO. (CLOSE)
2461-F175	75-1095	2461-F175	2461-N172
2461-F180	75-1095	2461-C203X	2461-C204X
2461-F185	75-1095	2461-F185	2461-N182
2461-F185	75-1095	2461-C209X	2461-C207X
251-F004	15-2-984	251-F404	251-N404
251-F015	15-2-951	251-C140S	251-N405
251-F015	15-2-951	251-C144A	251-N425
251-F015	15-2-951	251-C152B	251-N425
251-F015	15-2-951	251-C152C	251-N425
251-F015	15-2-951	251-C141A	251-N425
251-F015	15-2-951	251-C141B	251-N425
251-F015	15-2-951	251-C141C	251-N425
251-F015	15-2-951	251-C141D	251-N425
251-F015	15-2-951	251-C141E	251-N425
251-F015	15-2-951	251-C141F	251-N425
251-F015	15-2-951	251-C141G	251-N425
251-F015	15-2-951	251-C141H	251-N425
251-F015	15-2-951	251-C141I	251-N425
251-F015	15-2-951	251-C141J	251-N425
251-F015	15-2-951	251-C141K	251-N425
251-F015	15-2-951	251-C141L	251-N425
251-F015	15-2-951	251-C141M	251-N425
251-F015	15-2-951	251-C141N	251-N425
251-F015	15-2-951	251-C141O	251-N425
251-F015	15-2-951	251-C141P	251-N425
251-F015	15-2-951	251-C141Q	251-N425
251-F015	15-2-951	251-C141R	251-N425
251-F015	15-2-951	251-C141S	251-N425
251-F015	15-2-951	251-C141T	251-N425
251-F015	15-2-951	251-C141U	251-N425
251-F015	15-2-951	251-C141V	251-N425
251-F015	15-2-951	251-C141W	251-N425
251-F015	15-2-951	251-C141X	251-N425
251-F015	15-2-951	251-C141Y	251-N425
251-F015	15-2-951	251-C141Z	251-N425
251-F015	15-2-951	251-C142A	251-N425
251-F015	15-2-951	251-C142B	251-N425
251-F015	15-2-951	251-C142C	251-N425
251-F015	15-2-951	251-C142D	251-N425
251-F015	15-2-951	251-C142E	251-N425
251-F015	15-2-951	251-C142F	251-N425
251-F015	15-2-951	251-C142G	251-N425
251-F015	15-2-951	251-C142H	251-N425
251-F015	15-2-951	251-C142I	251-N425
251-F015	15-2-951	251-C142J	251-N425
251-F015	15-2-951	251-C142K	251-N425
251-F015	15-2-951	251-C142L	251-N425
251-F015	15-2-951	251-C142M	251-N425
251-F015	15-2-951	251-C142N	251-N425
251-F015	15-2-951	251-C142O	251-N425
251-F015	15-2-951	251-C142P	251-N425
251-F015	15-2-951	251-C142Q	251-N425
251-F015	15-2-951	251-C142R	251-N425
251-F015	15-2-951	251-C142S	251-N425
251-F015	15-2-951	251-C142T	251-N425
251-F015	15-2-951	251-C142U	251-N425
251-F015	15-2-951	251-C142V	251-N425
251-F015	15-2-951	251-C142W	251-N425
251-F015	15-2-951	251-C142X	251-N425
251-F015	15-2-951	251-C142Y	251-N425
251-F015	15-2-951	251-C142Z	251-N425

NOTES:
 1. FOR LEGEND, NOTES, REFERENCES, AND STANDARD DETAILS, SEE DRAWING D-215-001.

TERA APERTURE CARD

NUCLEAR SAFETY RELATED

REVISIONS

NO.	DATE	BY	CHKD.	DESCRIPTION
1	04/19/60	J. W. G.	W. S. G.	CONSTRUCTION AS NOTED
2	04/19/60	J. W. G.	W. S. G.	LIMITED CONSTRUCTION: AS NOTED
3	04/19/60	J. W. G.	W. S. G.	PRELIMINARY NOT FOR CONSTRUCTION
4	04/19/60	J. W. G.	W. S. G.	BIDDING PURPOSES

DATE RELEASED FOR ENGR.

THE CLEVELAND ELECTRIC ILLUMINATING COMPANY

PERRY NUCLEAR POWER PLANT UNIT 2

ELECTRICAL CONDUIT LAYOUT

SECTIONS AND DETAILS

NO.	DATE	BY	CHKD.	DESCRIPTION
1	04/19/60	J. W. G.	W. S. G.	CONSTRUCTION AS NOTED
2	04/19/60	J. W. G.	W. S. G.	LIMITED CONSTRUCTION: AS NOTED
3	04/19/60	J. W. G.	W. S. G.	PRELIMINARY NOT FOR CONSTRUCTION
4	04/19/60	J. W. G.	W. S. G.	BIDDING PURPOSES

DR. GILBERT ASSOCIATES, INC. ENGINEERS AND CONSULTANTS

PROJECT NO. 04-4549 D-265-G51 E

DATE 04/19/60

CND LYT SECTIONS E DETAILS

RIDS

8112030760

