

NOTES:

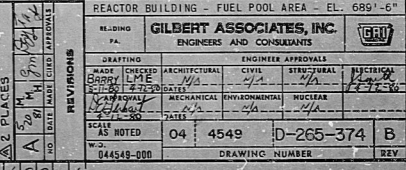
1. ALL BOX DIMENSIONS ARE TO OUTSIDE FACE OF BOX.
2. ALL PULL BOXES AND COVERS TO BE CONSTRUCTED OF 1/4" STAINLESS STEEL WHICH SHALL CONFORM TO ASTM A240, TYPE 302, OR TYPE 304.
3. ALL CABLE GUIDES TO BE CONSTRUCTED OF 1/4" GALVANIZED STEEL WITH NO CHIPS OR SCRATCHES, UNLESS OTHERWISE NOTED.
4. CONSTRUCTION SHALL BE ALL WELDED AND COMPLETELY WATER TIGHT.
5. COVERS SHALL BE REMOVABLE WITH WATER TIGHT NEOPRENE, (OR EQUAL) GASKET FIRMLY BONDED TO INNER FACE OF COVER. GASKETS SHALL HAVE HOLES MATCHING THOSE IN COVER.
6. MARK NUMBERS SHALL BE STAMPED ON INSIDE OF BOX.
7. ALL BOXES SHALL BE FREE OF BURRS AND SHARP EDGES.
8. CAPTIVATED STAINLESS STEEL COVER SCREWS THREADED INTO SEALED WELLS SIMILAR TO TYPE USED IN "HOFFMAN ENGINEERING GASKETED SCREW COVER BOXES" SHALL BE USED FOR PULL BOXES.
9. ALL STAINLESS STEEL SCHEDULE 40 PIPE AND SST PULL BOXES PURCHASED BY SP-265 AND INSTALLED BY SP-263. ALL GALVANIZED CONDUIT PURCHASED AND INSTALLED BY SP-263 PVC ADAPTERS FROM GALVANIZED TO SST CONDUIT PURCHASED AND INSTALLED BY SP-263.
10. SST PULL BOXES - MK SPCL-2 AND MK SPCL-3 TO HAVE NOTCH IN BOTTOM PLATE TO FIT OVER FACE PLATE OF CONDUIT BANK (DETAIL "A"), AS REQUIRED.

REFERENCES:  
 D-265-373 EMBEDDED CONDUIT - REACTOR BUILDING - FUEL POOL AREA - EL. 689'-6"

NUCLEAR SAFETY RELATED

| REVISIONS |                          |
|-----------|--------------------------|
| NO.       | DATE MADE CHNG APPROVALS |
| 1         | 11-21-62                 |
| 2         | 12-21-62                 |
| 3         | 1-15-63                  |

|   |   |          |
|---|---|----------|
| DATE  | RELEASED FOR                                | ENGR.    |
|   | THE CLEVELAND ELECTRIC ILLUMINATING COMPANY |          |
|   | PERRY NUCLEAR POWER PLANT                   | UNIT 2   |
| ELECTRICAL                                      |   |          |
| EMBEDDED CONDUIT DETAILS                        |   |          |
| REACTOR BUILDING - FUEL POOL AREA - EL. 689'-6" |   |          |
| DESIGNED BY                                     | GILBERT ASSOCIATES, INC.                    |          |
| CHECKED BY                                      | ENGINEERS AND CONSULTANTS                   |          |
| DRAWN BY  | ENGINEER APPROVAL                           |          |
| DATE  | 12-21-62                                    | 12-21-62 |
| SCALE   | AS SHOWN                                    | AS SHOWN |
| PROJECT   | 04  | 4549     |
| DRAWING NUMBER                                  | D-265-374                                   | B        |
| REVISED AS INDICATED                            |   |          |
| REVISIONS                                       |   |          |



RIDS

8112030758

