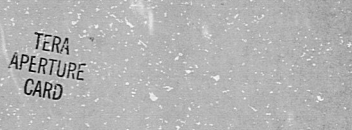


- NOTES:
- FOR LEGEND, NOTES, REFERENCES, AND STANDARD DETAILS, SEE Dwg. D-15-011.
  - CONDUITS CONTINUED UP, SEE Dwg. D-265-222. CONDUITS CONTINUED DOWN, SEE Dwg. D-250-212.
  - THIS DRAWING TO BE WORKED IN CONJUNCTION WITH THE FOLLOWING ELECTRICAL SUPPORT DRAWINGS:
    - SS-265-222, SHEET C17
    - SS-265-222, SHEET C18
    - SS-265-222, SHEET C19
    - SS-265-222, SHEET C20
    - SS-265-222, SHEET C21
    - SS-265-222, SHEET C22
    - SS-265-222, SHEET C23
    - SS-265-222, SHEET C24
    - SS-265-222, SHEET C25



VALVE MFL. NO.	SOLENOID NO.	LIM. SW. NO.
2E33F075A	2E33F075A	2E33F075A
2E33F075B	2E33F075B	2E33F075B
2E33F075C	2E33F075C	2E33F075C
2E33F075D	2E33F075D	2E33F075D
2E33F075E	2E33F075E	2E33F075E
2E33F075F	2E33F075F	2E33F075F
2E33F075G	2E33F075G	2E33F075G
2E33F075H	2E33F075H	2E33F075H
2E33F075I	2E33F075I	2E33F075I
2E33F075J	2E33F075J	2E33F075J
2E33F075K	2E33F075K	2E33F075K
2E33F075L	2E33F075L	2E33F075L
2E33F075M	2E33F075M	2E33F075M
2E33F075N	2E33F075N	2E33F075N
2E33F075O	2E33F075O	2E33F075O
2E33F075P	2E33F075P	2E33F075P
2E33F075Q	2E33F075Q	2E33F075Q
2E33F075R	2E33F075R	2E33F075R
2E33F075S	2E33F075S	2E33F075S
2E33F075T	2E33F075T	2E33F075T
2E33F075U	2E33F075U	2E33F075U
2E33F075V	2E33F075V	2E33F075V
2E33F075W	2E33F075W	2E33F075W
2E33F075X	2E33F075X	2E33F075X
2E33F075Y	2E33F075Y	2E33F075Y
2E33F075Z	2E33F075Z	2E33F075Z

REVISIONS		CONSTRUCTION	
NO.	DATE	BY	CHKD.
1	10/17/73	SP	SP
LIMITED CONSTRUCTION: AS NOTED		PRELIMINARY NOT FOR CONSTRUCTION	
BIDDING PURPOSES			
DATE RELEASED FOR		ENGR.	
THE CLEVELAND ELECTRIC ILLUMINATING COMPANY			
PERRY NUCLEAR POWER PLANT		UNIT 2	
ELECTRICAL		CONDUIT LAYOUT	
AUXILIARY BUILDING - WEST, EL. 590'-0"			
DRAWN BY		GILBERT ASSOCIATES, INC.	
CHECKED BY		ENGINEERS AND CONSULTANTS	
DESIGNED BY			
APPROVED BY			
SCALE		DRAWING NUMBER	
1/4" = 1'-0"		D-265-222 C	

CND LYT A/B WEST EL 590'-0"

R:DS

812030636

