

**SCHEDULE 'C'**

AZIMUTH	PENET. NO.	OUTSIDE EL.	AZIMUTH	PENET. NO.	OUTSIDE EL.
305° 52' 21"	ERB4011	624'-7"	310° 22' 21"	ERB4025	648'-10"
305° 52' 21"	ERB4018	625'-10"	310° 22' 21"	ERB4036	648'-10"
305° 52' 21"	ERB4029	645'-10"	312° 52' 39"	ERB4014	648'-7"
305° 52' 21"	ERB4050	645'-10"	312° 52' 39"	ERB4051	648'-10"
308° 22' 39"	ERB4012	648'-7"	312° 52' 39"	ERB4053	648'-10"
308° 22' 39"	ERB4051	651'-10"	312° 52' 39"	ERB4055	648'-10"
308° 22' 39"	ERB4052	648'-10"	314° 52' 21"	ERB5007	648'-7"
308° 22' 39"	ERB4053	645'-10"	314° 52' 21"	ERB4060	651'-10"
310° 22' 21"	ERB5013	654'-7"	314° 52' 21"	ERB4061	648'-10"
310° 22' 21"	ERB4054	651'-10"	314° 52' 21"	ERB4062	648'-10"

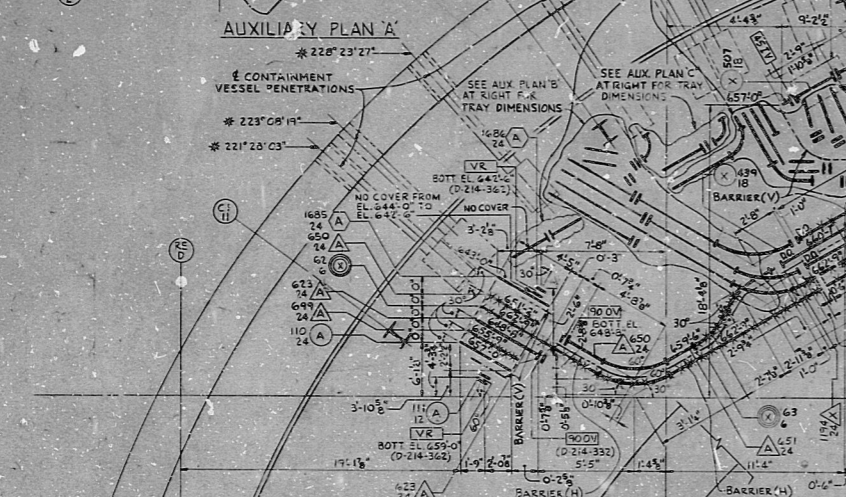
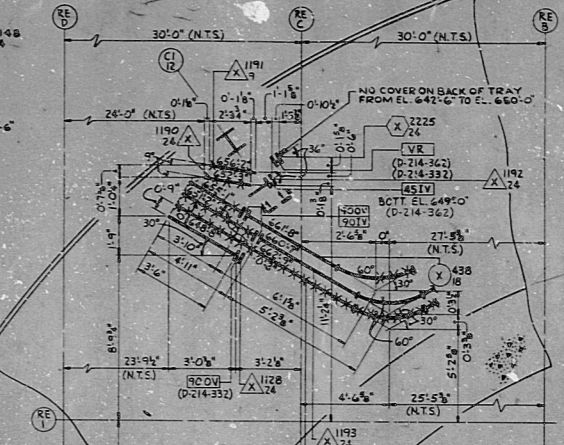
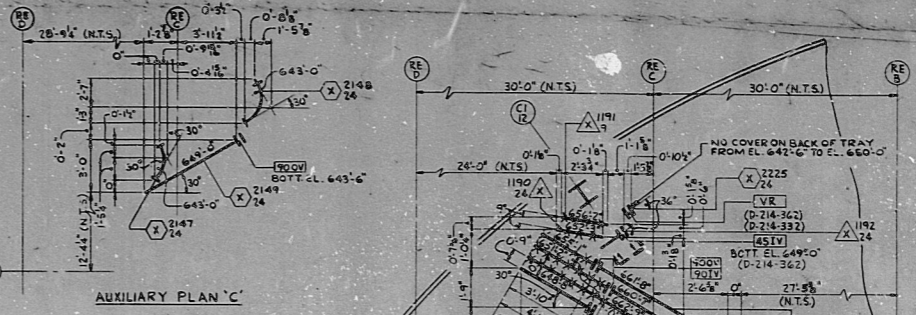
**SCHEDULE 'A'**

AZIMUTH	PENET. NO.	MPL. NO.	ELEVATION	AZIMUTH	PENET. NO.	MPL. NO.	ELEVATION
221° 28' 03"	E302	IR72-S016	643'-3"	235° 54' 44"	E329	SPARE	649'-9"
221° 28' 03"	E309	IR72-S008	649'-9"	235° 54' 44"	E333	IR72-S025	651'-6"
221° 28' 03"	E312	IR72-S007	651'-6"	235° 54' 44"	E337	IR72-S011	657'-11"
221° 28' 03"	E315	IR72-S003	654'-3"	241° 09' 52"	E324	SPARE	643'-3"
221° 28' 03"	E318	IR72-S001	659'-0"	241° 09' 52"	E330	SPARE	649'-9"
223° 08' 19"	E307	SPARE	643'-3"	241° 09' 52"	E334	SPARE	651'-6"
223° 08' 19"	E310	SPARE	649'-9"	241° 09' 52"	E338	SPARE	657'-11"
223° 08' 19"	E313	SPARE	651'-6"	242° 50' 08"	E327	IR72-S022	643'-3"
223° 08' 19"	E316	SPARE	656'-3"	242° 50' 08"	E331	IR72-S015	649'-9"
228° 23' 27"	E308	IR72-S018	643'-3"	242° 50' 08"	E335	IR72-S014	651'-6"
228° 23' 27"	E311	IR72-S013	648'-10"	242° 50' 08"	E339	IR72-S006	657'-11"
228° 23' 27"	E314	IR72-S012	651'-6"	248° 05' 16"	E328	IR72-S020	643'-3"
228° 23' 27"	E317	IR72-S005	646'-3"	248° 05' 16"	E332	IR72-S010	649'-9"
228° 23' 27"	E320	IR72-S002	659'-0"	248° 05' 16"	E334	IR72-S009	651'-6"
235° 54' 44"	E325	IR72-S024	643'-3"	248° 05' 16"	E340	IR72-S004	657'-11"

**SCHEDULE 'B'**

AZIMUTH	PENET. NO.	OUTSIDE EL.	AZIMUTH	PENET. NO.	OUTSIDE EL.
240° 52' 39"	ERB4028	651'-10"	251° 52' 21"	ERB4038	651'-10"
240° 52' 39"	ERB4029	648'-10"	251° 52' 21"	ERB4039	648'-10"
242° 52' 21"	ERB4030	651'-10"	254° 22' 39"	ERB4040	651'-10"
242° 52' 21"	ERB4031	648'-10"	254° 22' 39"	ERB4041	648'-10"
245° 22' 39"	ERB1032	651'-10"	254° 22' 21"	ERB4042	651'-10"
245° 22' 39"	ERB4033	648'-10"	256° 22' 21"	ERB4043	648'-10"
247° 22' 21"	ERB4034	651'-10"	258° 52' 39"	ERB4044	651'-10"
247° 22' 21"	ERB4035	648'-10"	258° 52' 39"	ERB4045	648'-10"
249° 52' 39"	ERB4036	651'-10"	260° 52' 21"	ERB4046	651'-10"
249° 52' 39"	ERB4037	648'-10"	260° 52' 21"	ERB4047	648'-10"

- NOTES:-
- FOR LEGEND, NOTES, REFERENCES AND STANDARD DETAILS, SEE DWG. D-214-001.
  - COLUMN LINES MARKED WITH "R" DESIGNATION (RE) ARE FITTINGS AND ARE USED ONLY FOR COMPUTER CABLE ROUTING.
  - FOR SINGLE ASTERISK (\*) INFORMATION, SEE SCHEDULE "A" THIS DRAWING.
  - FOR DOUBLE ASTERISK (\*\*) INFORMATION, SEE SCHEDULE "B" THIS DRAWING.
  - FOR TRIPLE ASTERISK (\*\*\*) INFORMATION, SEE SCHEDULE "C" THIS DRAWING.



REVISED TRAY #508 AT COORDS. D9 & E9.

ADDED TRAY GAPS IN TRAY #192 AT COORD. C11; TRAY #196 AT COORD. F4; TRAYS #197, #198, #199 AT COORD. E5 AND TRAYS #200 & #201 AT COORDS. E5 (E50).

REVISED TRAY #507 AT COORDS. D10 & E4; TRAY #508 AT COORDS. D10 & E5.

ADD TRAY #1561 AT COORD. B11 & B15; TRAY #1562 AT COORD. B14 & B17; TRAY #1534 AT COORD. B11; TRAY #699 AT COORD. E12 & F11. ADD AUXILIARY PLAN "A" AT COORD. B5 & E2. REVISED TRAYS #1190, #1192 & #1225 AT COORD. E3; TRAYS #1685, #1686 & #650 AT COORD. E11; TRAY #1111 & #650 AT COORD. F11; TRAY #110 AT COORD. F12.

REVISED TRAY #185 AT COORD. B13.

REVISED SCHEDULES "A" & "C" TO INDICATE OUTSIDE EL.

CHANGED TRAY NUMBERS #185 TO #182 AND #186 TO #183 AT COORD. C12. REVISED TRAY #231, #185, #186, #188, #189, #190 AT COORD. B12; TRAY #507 AT COORDS. D9 & D10; TRAY #699 AT COORDS. E1 & E2; TRAY #399 AT COORD. E3; TRAYS #185, #187 AT COORD. E4 AND TRAYS #501 & #448 AT COORD. F2. REVISED TRAY #180 AT COORD. B12. ADDED TRAY #183 AT COORD. B11.

CHANGED HORIZONTAL BARRIERS AT COORDS. E10, E11 AND F-11.

CHECKED DWG. & RELEASED FOR CONSTRUCTION. REDESIGNED TRAYS.

**NUCLEAR SAFETY RELATED**

NO SAFE HAZARD CONNS APPROVALS

**REVISIONS**

DATE	RELEASED FOR	ENGR
11/14/78	CONSTRUCTION	JM
11/14/78	LIMITED CONSTRUCTION: AS NOTED	
11/14/78	PRELIMINARY NOT FOR CONSTRUCTION	
11/14/78	BIDDING PURPOSES P-33	

**THE CLEVELAND ELECTRIC ILLUMINATING COMPANY**

PERRY NUCLEAR POWER PLANT UNIT 1

ELECTRICAL CABLE TRAY LAYOUT

REACTOR BUILDING WEST - EL. 642'-0"

**GILBERT ASSOCIATES, INC.**  
ENGINEERS AND CONSULTANTS

ENGINEER APPROVALS

DATE: 11/14/78

SCALE: 1/8"=1'-0"

NO. 04 4549 D-214-342 J

TRAY LYT R/B WEST EL 642-0

RIDS

8112030618

