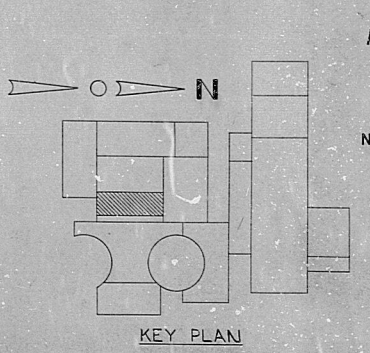
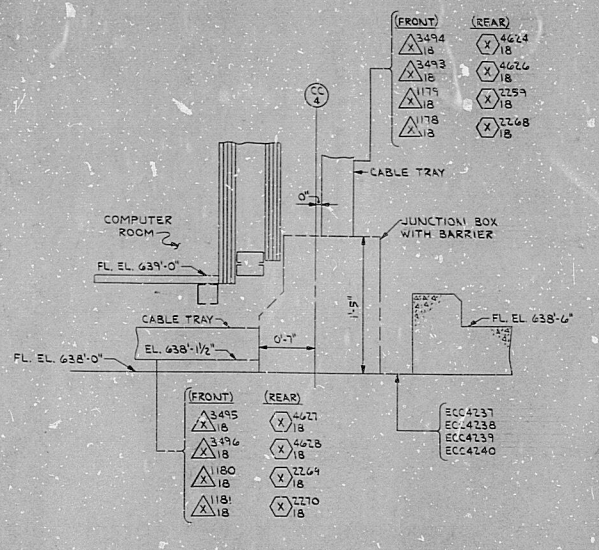


- NOTES:
1. FOR LEGEND, NOTES, REFERENCES AND STANDARD DETAILS, SEE DWG. D-214-001.
 2. TRAY SYMBOLS WITH ASTERISK (*) INDICATES INSTRUMENT TRAY WITHOUT A SOLID BOTTOM COVER.
(L) ACCOMMODATE CABLES LEAVING TRAY BETWEEN BOTTOM RUNS.
 3. THIS DRAWING TO BE WORKED IN CONJUNCTION WITH DWGS. D-214-141 AND D-214-143.
 4. ALL TRAY FITTING RADII ON THIS DRAWING ARE 12 INCHES.



TERA APERTURE CARD

NUCLEAR SAFETY RELATED

NO.	DATE	MADE	CHG	APPROVALS
-----	------	------	-----	-----------

REVISIONS	
5/12/78	CONSTRUCTION SP-12
	LIMITED CONSTRUCTION - AS NOTED
	PRELIMINARY NOT FOR CONSTRUCTION
	BIDDING PURPOSES
DATE	RELEASED FOR ENGR.
THE CLEVELAND ELECTRIC ILLUMINATING COMPANY	
PERRY NUCLEAR POWER PLANT UNITS 1 & 2	
ELECTRICAL	
CABLE TRAY LAYOUT	
CONTROL COMPLEX - EAST - AUXILIARY PLAN - EL. 638'-0"	
ENGINEER	GILBERT ASSOCIATES, INC.
ENGINEER APPROVALS	
MECHANICAL	
ENVIRONMENTAL	
NUCLEAR	
DATE	
SCALE	
NO.	DATE
178	04
4549	D-214-144
844548-000	F

NO.	DATE	REVISIONS
1	5/12/78	ISSUED FOR CONSTRUCTION
2	5/12/78	REVISIONS
3	5/12/78	REVISIONS
4	5/12/78	REVISIONS
5	5/12/78	REVISIONS
6	5/12/78	REVISIONS
7	5/12/78	REVISIONS
8	5/12/78	REVISIONS
9	5/12/78	REVISIONS
10	5/12/78	REVISIONS
11	5/12/78	REVISIONS
12	5/12/78	REVISIONS
13	5/12/78	REVISIONS
14	5/12/78	REVISIONS
15	5/12/78	REVISIONS
16	5/12/78	REVISIONS
17	5/12/78	REVISIONS
18	5/12/78	REVISIONS
19	5/12/78	REVISIONS
20	5/12/78	REVISIONS
21	5/12/78	REVISIONS
22	5/12/78	REVISIONS
23	5/12/78	REVISIONS
24	5/12/78	REVISIONS
25	5/12/78	REVISIONS
26	5/12/78	REVISIONS
27	5/12/78	REVISIONS
28	5/12/78	REVISIONS
29	5/12/78	REVISIONS
30	5/12/78	REVISIONS
31	5/12/78	REVISIONS
32	5/12/78	REVISIONS
33	5/12/78	REVISIONS
34	5/12/78	REVISIONS
35	5/12/78	REVISIONS
36	5/12/78	REVISIONS
37	5/12/78	REVISIONS
38	5/12/78	REVISIONS
39	5/12/78	REVISIONS
40	5/12/78	REVISIONS
41	5/12/78	REVISIONS
42	5/12/78	REVISIONS
43	5/12/78	REVISIONS
44	5/12/78	REVISIONS
45	5/12/78	REVISIONS
46	5/12/78	REVISIONS
47	5/12/78	REVISIONS
48	5/12/78	REVISIONS
49	5/12/78	REVISIONS
50	5/12/78	REVISIONS
51	5/12/78	REVISIONS
52	5/12/78	REVISIONS
53	5/12/78	REVISIONS
54	5/12/78	REVISIONS
55	5/12/78	REVISIONS
56	5/12/78	REVISIONS
57	5/12/78	REVISIONS
58	5/12/78	REVISIONS
59	5/12/78	REVISIONS
60	5/12/78	REVISIONS
61	5/12/78	REVISIONS
62	5/12/78	REVISIONS
63	5/12/78	REVISIONS
64	5/12/78	REVISIONS
65	5/12/78	REVISIONS
66	5/12/78	REVISIONS
67	5/12/78	REVISIONS
68	5/12/78	REVISIONS
69	5/12/78	REVISIONS
70	5/12/78	REVISIONS
71	5/12/78	REVISIONS
72	5/12/78	REVISIONS
73	5/12/78	REVISIONS
74	5/12/78	REVISIONS
75	5/12/78	REVISIONS
76	5/12/78	REVISIONS
77	5/12/78	REVISIONS
78	5/12/78	REVISIONS
79	5/12/78	REVISIONS
80	5/12/78	REVISIONS
81	5/12/78	REVISIONS
82	5/12/78	REVISIONS
83	5/12/78	REVISIONS
84	5/12/78	REVISIONS
85	5/12/78	REVISIONS
86	5/12/78	REVISIONS
87	5/12/78	REVISIONS
88	5/12/78	REVISIONS
89	5/12/78	REVISIONS
90	5/12/78	REVISIONS
91	5/12/78	REVISIONS
92	5/12/78	REVISIONS
93	5/12/78	REVISIONS
94	5/12/78	REVISIONS
95	5/12/78	REVISIONS
96	5/12/78	REVISIONS
97	5/12/78	REVISIONS
98	5/12/78	REVISIONS
99	5/12/78	REVISIONS
100	5/12/78	REVISIONS

RIDS

811203061

