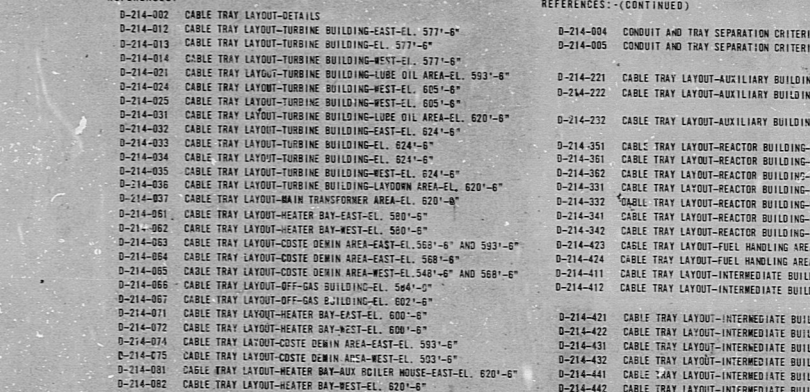
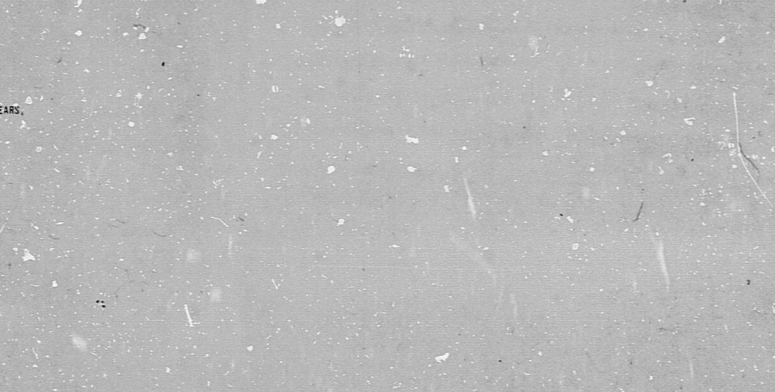
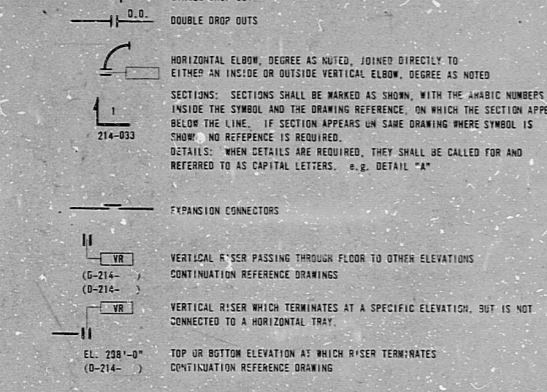


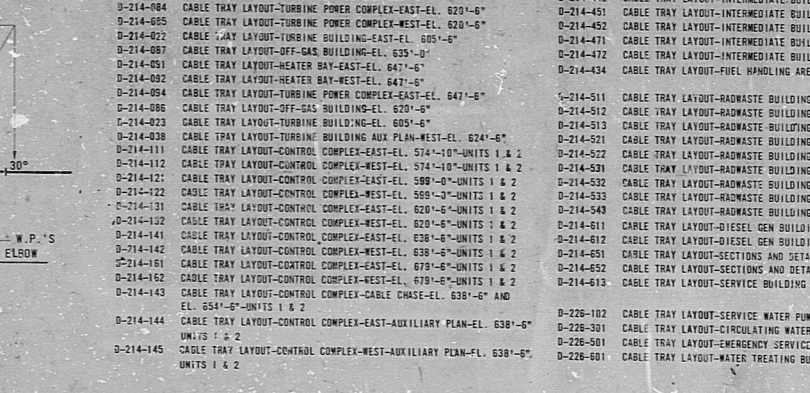
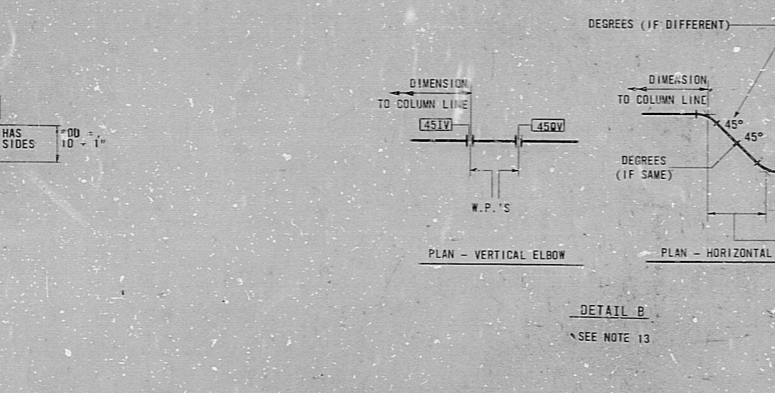
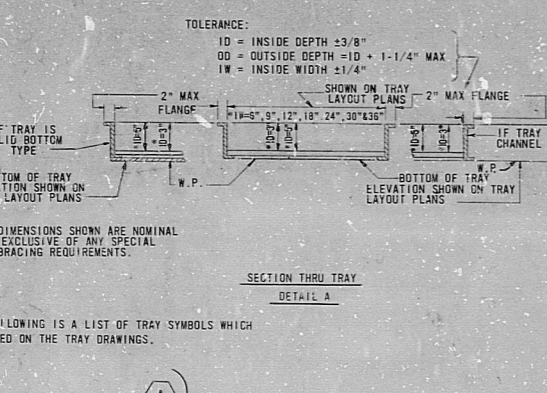
NOTES: (CONTINUED) 26. WHEN THE INSTALLATION REQUIRES FIELD CUTTING OF STRAIGHT LENGTHS OF SAFETY RELATED LADDER TYPE POWER OR CONTROL CABLE TRAYS... 27. CONTROL TRAYS (QUIETBOARDS) TO HAVE SOLID, REMOVABLE, PEAKED, FLUSH COVERS... 28. FOR NON-SAFETY/NON-SEISMIC TRAY ONLY, THE CONTRACTOR MAY MODIFY FITTINGS FOR LADDER AND SOLID BOTTOM TYPE TRAY...

NOTES: 1. ALL 12 INCH POWER TRAYS TO BE LADDER TYPE WITH 3 INCH USABLE DEPTH (INSIDE DIMENSION)... 2. ALL SIMILE LAYER POWER TRAYS TO BE LADDER TYPE WITH 3 INCH USABLE DEPTH... 3. ALL SIMILE LAYER POWER AND CONTROL TRAYS TO BE LADDER TYPE WITH 3 INCH USABLE DEPTH... 4. SPLICES FOR SEISMIC SUPPORTED 36 INCH WIDE TRAY SHALL BE MADE BY MEANS OF TWO SPLICE PLATES ON BOTH SIDES OF TRAY...

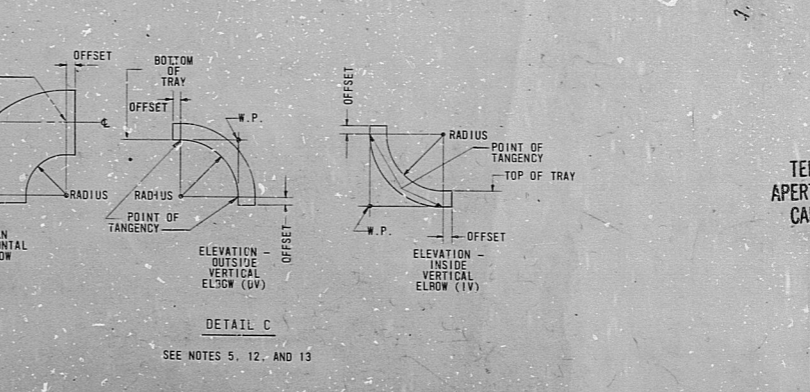
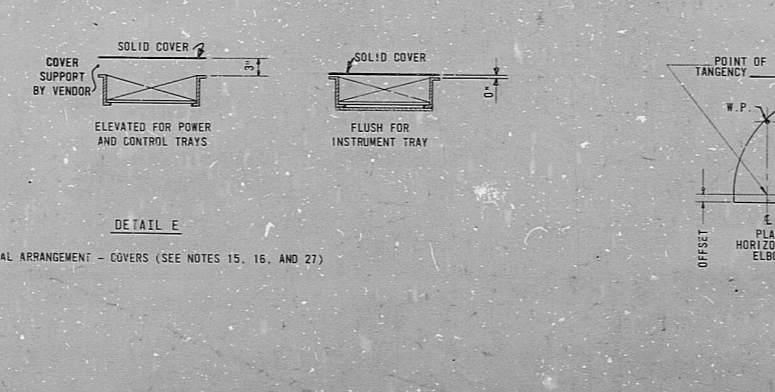
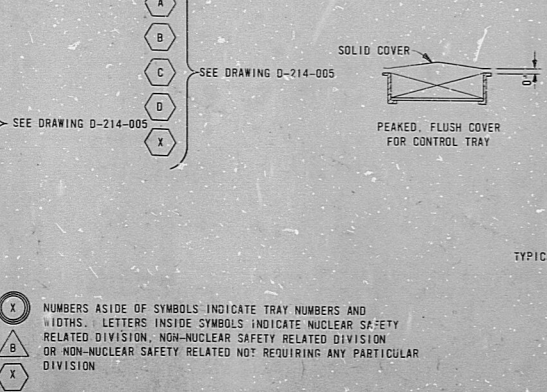
NOTES: (CONTINUED) 23. ALL INSTRUMENT TRAYS TO BE LADDER TYPE WITH A SOLID CORRUGATED STEEL BOTTOM BELTED TO SIDE RAILS AND 3/16" RIGS ON 1/4" CENTERS TO ACCOMMODATE CABLE TRAYS WITH 1/4" MINIMUM USABLE DEPTH... 24. A BASKET WEAVE TYPE CABLE TRAY SHALL BE INSTALLED ON CABLES IN VERTICAL RACEWAY RUNS... 25. WALL AND FLOOR OPENINGS ARE IDENTIFIED BY DISCIPLINE, AREA, LEVEL AND NUMBER.



REVISED REFERENCES AT COORDS... Table with columns for coordinate, revision, and description.



REVISED REFERENCES AT COORDS... Table with columns for coordinate, revision, and description.



NUCLEAR SAFETY RELATED table with columns for construction status, date, and release for ENGR.

RIDS

8112030590

