

E-03NK10

SIZE E

AT LOAD CENTER
180V-3 phase

TO CHARGER

SPARE

SPARE

SPARE

SPARE

SPARE

SPARE

SPARE

SPARE

SPARE

SPARE

SPARE

SPARE

SPARE

SPARE

SPARE

SPARE

SPARE

SPARE

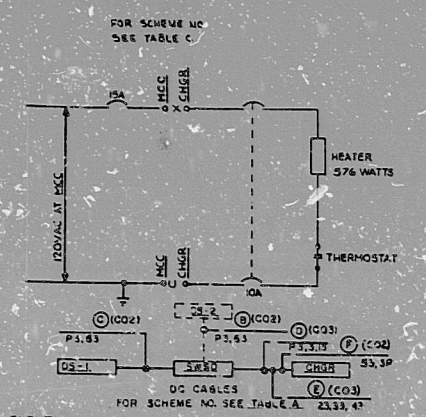
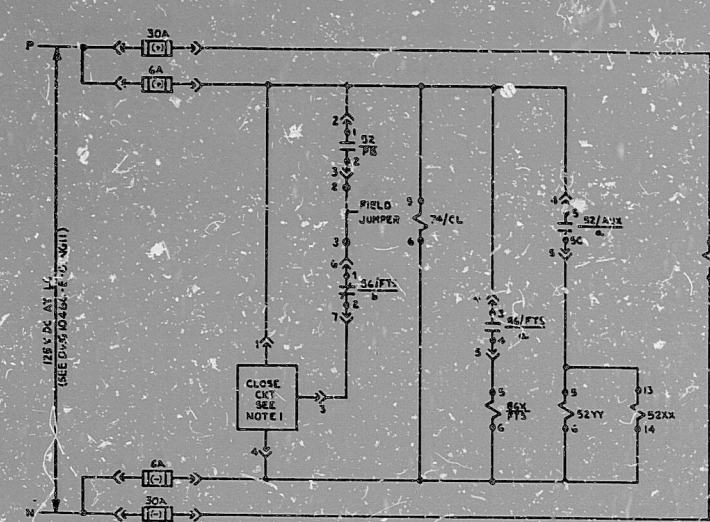
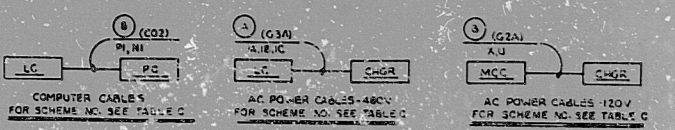
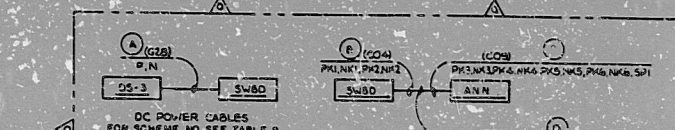


TABLE A

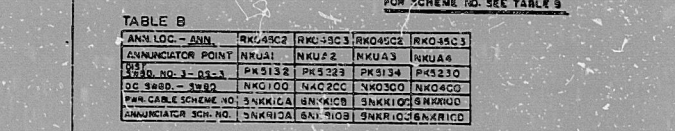
SCHEM. NO.	UNIK10A	2NK10B	3NK10C	4NK10D
DCSEL	NK4100	NK4200	NK4300	NK4400
DC SWBD	NK5000	NK5100	NK5200	NK5300
CHARGER	NK21	NK22	NK23	NK24
DC CABLES	NK1001	NK1002	NK1003	NK1004
ANNUNCIATOR	NK1001	NK1002	NK1003	NK1004



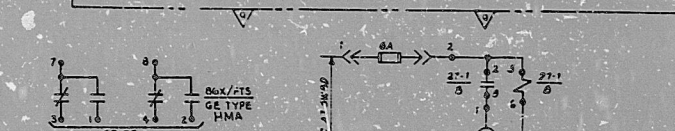
COMPUTER CABLES
FOR SCHEME NO. SEE TABLE C



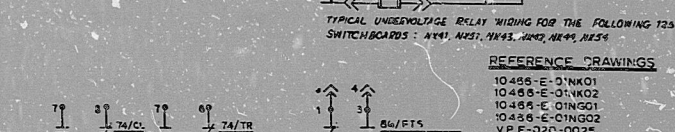
AC POWER CABLES 120V
FOR SCHEME NO. SEE TABLE C



DC POWER CABLES
FOR SCHEME NO. SEE TABLE B



ANNUNCIATOR CABLES
FOR SCHEME NO. SEE TABLE B



TYPICAL UNDERVOLTAGE RELAY WIRING FOR THE FOLLOWING 125V DC SWITCHBOARDS: NK1001, NK1002, NK1003, NK1004, NK1005

REFERENCE DRAWINGS

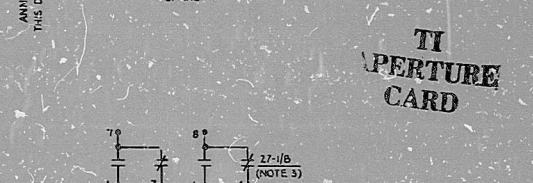
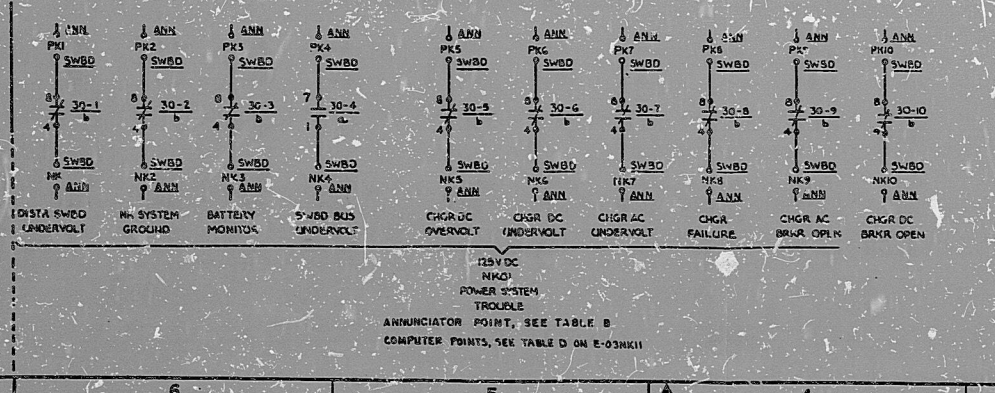
10456-E-01NK01
10456-E-01NK02
10456-E-01NK03
10456-E-01NK04
10456-E-01NK05
10456-E-01NK06
10456-E-01NK07
10456-E-01NK08
10456-E-01NK09
10456-E-01NK10

NOTES:
1. FOR SOUND MECHANISM CMT INTERNALS, SEE DWG. E-03NK10.
2. DISTRIBUTION SWITCHBOARD-E APPEARS ONLY IN THE NK1001 AND NK1002 SCHEMATIC.
3. SEE DC BUS, E-03NK10 AND E-03NK11 FOR RELAY DETAILS.
4. 27/B CONTACT (27/B) IS A SPARE CONTACT FOR THE 27/B RELAY.
5. AN ALARM CONDITION EXISTS AT THE LOCAL ANNUNCIATOR WHEN CONTACT 27/B IS IN THE RELAY POSITION.

TABLE C

COMPUTER POINT	NK25	NK28	NK27	NK26
LOAD CENTER LVE-LC	NK1015	NK1013	NK1014	NK1016
CHARGER-CHGR	NK21	NK22	NK23	NK24
COMPUTER-PC	NK1015	NK1013	NK1014	NK1016

ANNUNCIATOR INPUTS & COMPUTER POINTS



TI PERTURE CARD

COMPUTER POINT
SEE TABLE C

REVIEW LEVEL 1

DATE: 23-77

SCALE: 1/8"

BY: [Signature]

DATE: 23-77

SCALE: 1/8"

BY: [Signature]

6	NR	NR	NR	NR	NR
5	NR	NR	NR	NR	NR
4	NR	NR	NR	NR	NR
3	NR	NR	NR	NR	NR
2	NR	NR	NR	NR	NR
1	NR	NR	NR	NR	NR

NOTES:
1. THIS DRAWING IS A PART OF THE PROJECT DRAWING SET.
2. THIS DRAWING IS A PART OF THE PROJECT DRAWING SET.
3. THIS DRAWING IS A PART OF THE PROJECT DRAWING SET.

DATE: 23-77

SCALE: 1/8"

BY: [Signature]

DATE: 23-77

SCALE: 1/8"

BY: [Signature]

I certify that the design contained on this drawing was made in the normal and regular course of business, on the date stated below and that it is an original production of the inventor(s) indicated on this drawing.

30X

8.5"

11"

17"

JENSEN

8410040/77

PDR RIDS

