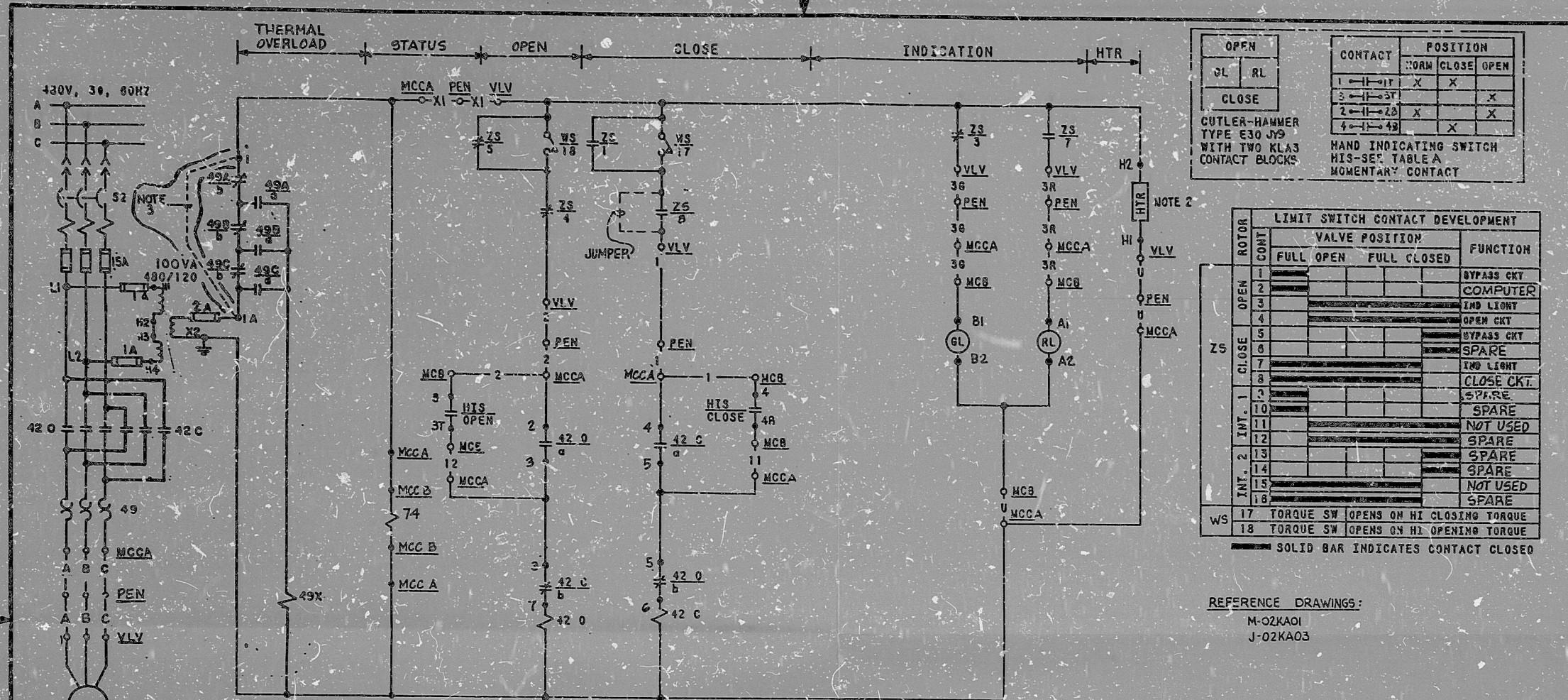


This drawing and the design it covers is the property of the utilities which are participating in the SNUPPS Project. It is loaned to the borrower's express agreement that it will not be reproduced, copied, issued, exhibited, or used except in the limited way and private use permitted by written consent given by the SNUPPS Utilities to the borrower.



OPEN		CONTACT		POSITION	
OL	RL	1	2	NOAM	OPEN
		X	X		
				X	X
		X	X		
				X	X

CUTLER-HAMMER TYPE E30 JY9 WITH TWO KLA3 CONTACT BLOCKS

HAND INDICATING SWITCH HIS-SEE TABLE A MOMENTARY CONTACT

ROTOR CONT	LIMIT SWITCH CONTACT DEVELOPMENT		FUNCTION
	FULL OPEN	FULL CLOSED	
1			BYPASS CKT
2			COMPUTER
3			IND LIGHT
4			OPEN CKT
5			BYPASS CKT
6			SPARE
7			IND LIGHT
8			CLOSE CKT
9			SPARE
10			SPARE
11			NOT USED
12			SPARE
13			SPARE
14			SPARE
15			NOT USED
16			SPARE
17			TORQUE SW OPENS ON HI CLOSING TORQUE
18			TORQUE SW OPENS ON HI OPENING TORQUE

SOLID BAR INDICATES CONTACT CLOSED

REFERENCE DRAWINGS:  
M-02KA01  
J-02KA03

TABLE B

PENETRATION - PEN	ZSE234
COMP. REF. BECHTEL VP. NO.	J-106-C115
COMPUTER POINT	KAZ30
PC LOCATION - PC	RJ160A
VLV. NO. - VLV	KAHV30
SCHEME NO.	4KARC4A

OPEN CKT THIS DWG.  
CLOSE CKT THIS DWG.  
CLOSE INTLK THIS DWG.  
OPEN INTLK THIS DWG.

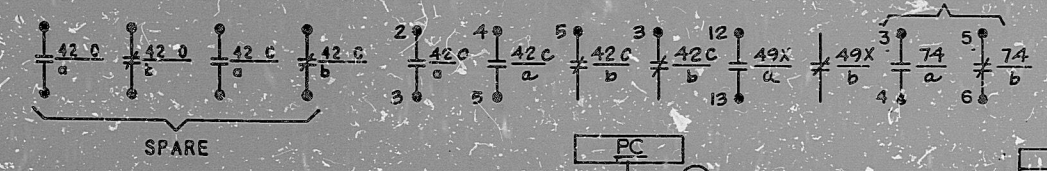
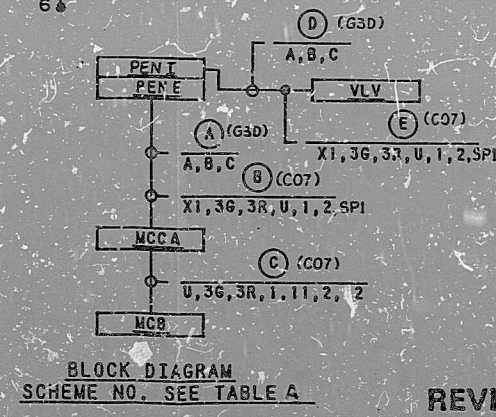
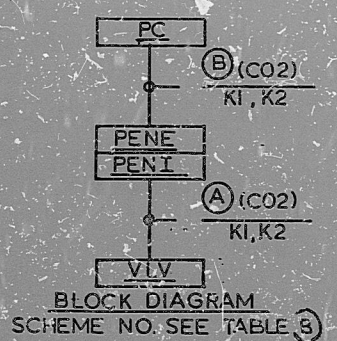


TABLE A

MCC LOCATION - MCC-D	NG02BFR1
PENETRATION NO. - PEN	ZSE234
HIS NUMBER	KAHIS30
MCC LOCATION - MCCA	NG02BFF3
HIS LOCATION - MCB	RL324
VALVE NO. - VLV	KAHV30
SCHEME NO.	4KA04A

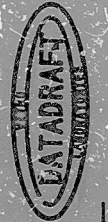


- NOTES:
- VALVE SHOWN IN FULL CLOSED POSITION
  - HEATER 25 WATTS. MANUFACTURER [unclear]
  - JUMPER TO BE INSTALLED PRIOR TO CORE LOADING

NO.	DATE	REVISED	BY	CHKD	DESIGN	ENGR	PROJ	APPV
1								

SCALE		DESIGNED	DLG	DRAWN	CAD	CHECKED	ENGR
BECHTEL		GAITHERSBURG, MARYLAND		SNUPPS		SCHEMATIC DIAGRAM	
HYDROGEN CONTROL SYSTEM MAKE-UP		AIR VALVE		UTILITY DRAWING NO.		REV	
JOB NO.		10488		BECHTEL DRAWING NO.		E-03KA04 (0)	
DATE		10/11/88		REV		4	

I certify that the image contained on this frame was made in the normal and regular course of business, on the date stated below and that it is an accurate reproduction of the document(s) submitted to Micrographics.  
DATE 11/18/88 OPERATOR *Mike Bernard* SUPERVISOR *[Signature]*





8410040168

PDR RIDS

