

10-1-82
 APED DRAWING REVIEW
 COMMENTS AS CHECKED BELOW

NO COMMENTS
 COMMENTS AS INDICATED FOR APED'S INFORMATION AND USE ONLY. NO REPLY REQUIRED.
 COMMENTS AS INDICATED, WHEN DIRECTLY AFFECTING BECHTEL RESPONSIBILITY, REPLY REQUIRED IF NOT INCORPORATED BY APED.

FORWARDED BY: [Signature]
 REVIEWED BY: [Signature]

BECHTEL JOB NO. 2856
 SAN FRANCISCO

DISCIPLINE	QTY	DATE
CIVIL		
ELECTRICAL		
MECHANICAL		
PLANT DESIGN		
CONTROL SYS.		
ANALYSIS		
SCHEDULE		
PURCHASING		
INSPECTION		
STARTUP		
OPERATION		
RECORD		

UNCONTROLLED DOCUMENT
 FOR REFERENCE ONLY

8856-M1-E32-18(4)-#5

FF 127050

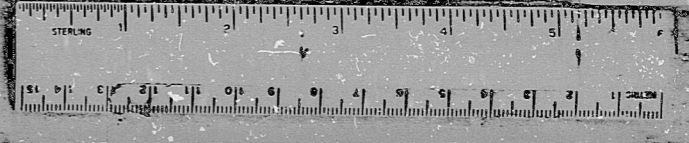
Y/M	Y/M	Y/M	Y/M	Y/M	Y/M	Y/M	Y/M	Y/M	Y/M

13-23

4	NJ31004	1	2/28/82	APED
5	NJ34315	1	3/1/82	APED

I certify that the microfilm image contained on this microform was made in the normal and regular course of business. This is a true, full, correct and complete reproduction and replacement for and/or in lieu of original documents generated by the Bechtel group of companies.

Signed: D. YUNZAL Date: 3-24-83 Camera Type: MRGI



RIDS

8305250153

