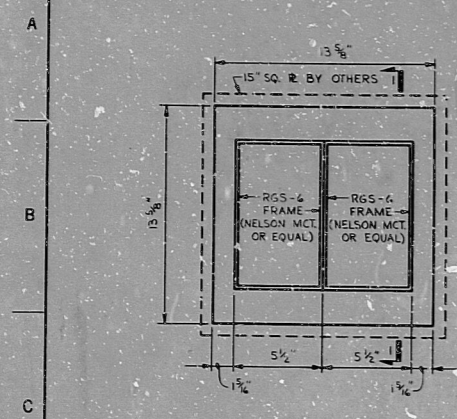
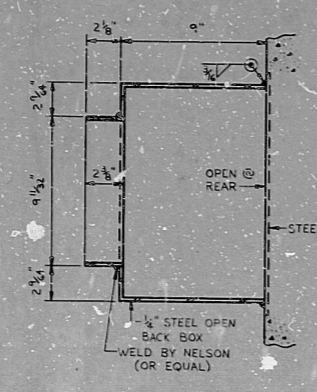


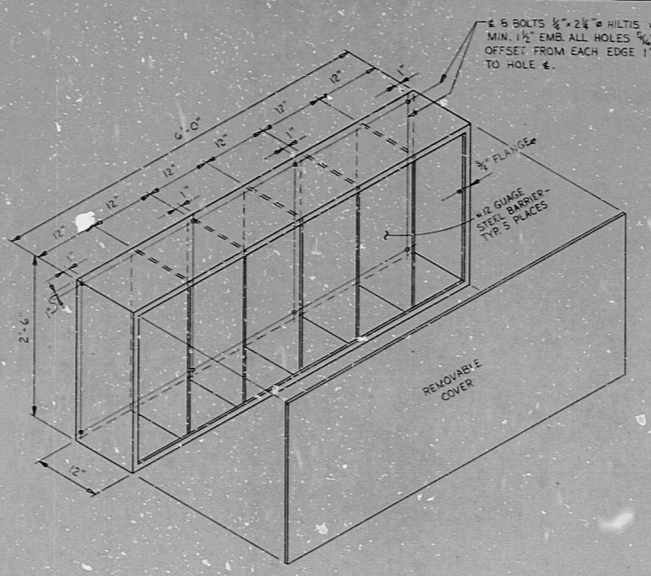
14 13 12 11 10 9 8 7 6 5 4 3 2 1



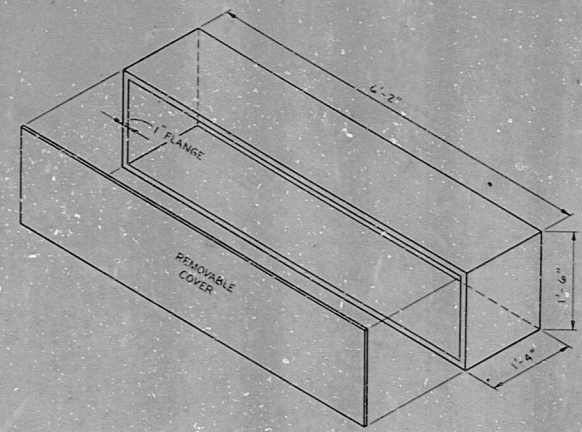
SPECIAL MARK 49
FRONT VIEW
SP-33



SECTION i-i



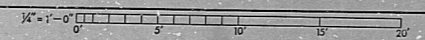
SPECIAL MARK 50
SP-33



SPECIAL MARK 53
SP-33

- NOTES:-
1. DIMENSIONS - ALL INSIDE.
 2. MATERIAL - MINIMUM GAUGE #12, OTHERWISE IN CONFORMANCE WITH "NATIONAL ELECTRICAL CODE", UNLESS INDICATED OTHERWISE.
 3. CONSTRUCTION - ALL WELDED.
 4. FLANGES - AS INDICATED. PROVIDE SUITABLE TAPPED HOLES FOR MOUNTING COVERS, AND NEOPRENE, OR EQUAL, GASKETS WITH NON-FERROUS COVERS.
 5. GASKETS - NEOPRENE, OR EQUAL, FIRMLY BONDED TO INNER FACE OF COVER WITH HOLES MATCHING THOSE IN THE COVER.
 6. MARK NUMBERS - TO BE STAMPED ON ALL BOXES ON OUTER SURFACE OF BACK (OPPOSITE COVER).
 7. FINISH - BOXES AND COVERS TO BE GALVANIZED WITH NO CHIPS OR SCRATCHES, UNLESS INDICATED OTHERWISE. ALL BOXES SHALL BE FREE OF BURRS AND SHARP EDGES.
 8. FOR REFERENCES, SEE DRG. D-201-133.

• DW 1001-0



NUCLEAR SAFETY RELATED

REVISIONS	
NO.	DATE MADE CHNG. APPROVALS
1	CONSTRUCTION SP-33
2	LIMITED CONSTRUCTION: AS NOTED
3	PRELIMINARY NOT FOR CONSTRUCTION
4	BIDDING PURPOSES

DATE: _____ RELEASED FOR: _____ ENGR: _____
THE CLEVELAND ELECTRIC ILLUMINATING COMPANY
 PERRY NUCLEAR POWER PLANT UNITS 1 & 2

TERA
APERTURE
CARD

SPECIAL MARKS		REVISIONS	
ADD'D	REVISED	NO.	DATE MADE CHNG. APPROVALS
1	1	1	CONSTRUCTION SP-33
2	2	2	LIMITED CONSTRUCTION: AS NOTED
3	3	3	PRELIMINARY NOT FOR CONSTRUCTION
4	4	4	BIDDING PURPOSES
5	5	5	
6	6	6	
7	7	7	
8	8	8	
9	9	9	
10	10	10	
11	11	11	
12	12	12	
13	13	13	
14	14	14	

DRAWING		ENGINEER APPROVALS	
NAME	TITLE	NAME	TITLE
DATE	DATE	DATE	DATE
SCALE	NOTED	DATE	DATE
04	4549	D-201-138	B
DRAWING NUMBER		REV.	

SPEC PULL TERMINAL & JCT BOXES

34"

RIDS

8112030576

