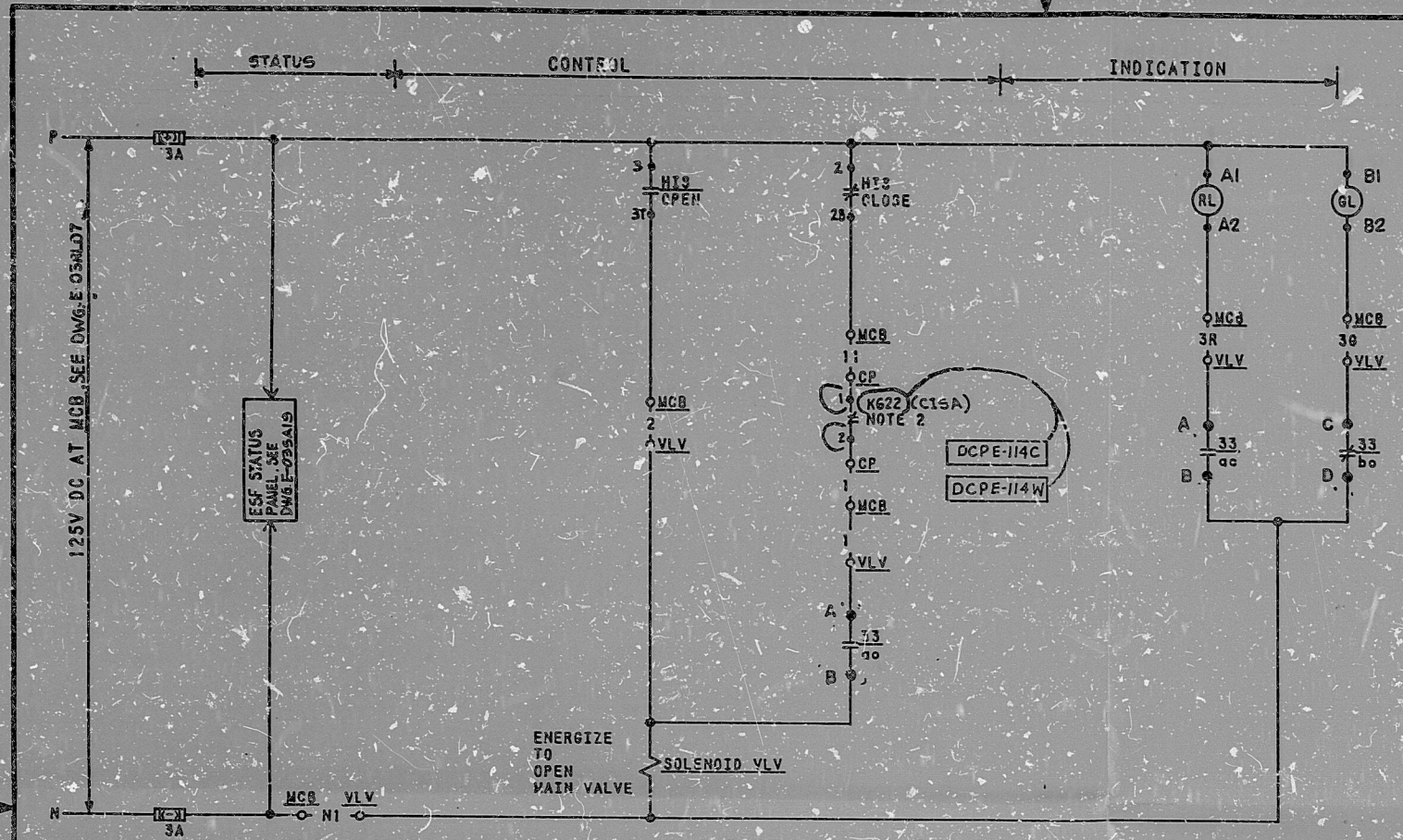


This drawing and the design it covers is the property of the utilities which are participating in the SNPPS Project. It is loaned on the borrower's express agreement that it will not be reproduced, copied, loaned, exhibited, or used except in the limited way and private use permitted by written consent given by the SNPPS utilities to the borrower.



OPEN		CONTACT		POSITION		
BL	RL			NORM	CLOSE	OPEN
CLOSE		1	17	X	X	
		3	37			X
		2	25	X		X
		4	45		X	

CHITLER-HAMMER
TYPE 230 Y9
WITH 2 KLA-3
CONTACT BLOCKS

HAND INDICATING SWITCH
HIS-SEE TABLE A
MOMENTARY CONTACT

DEVICE 33 - POSITION SWITCHES				
POS.	CONTACT	VALVE POSITION		FUNCTION
		CLOSED	OPEN	
CLOSED	1-11	aa		RED LIGHT
	2-11	bc		NOTE 3
	3-11	cc		SPARE
	4-11	bc		SPARE
OPEN	1-11	ao		SEAL IN CRT
	2-11	bo		GREEN LIGHT
	3-11	ao		SPARE
	4-11	bo		COMPUTER

SOLID BAR INDICATES CONTACT CLOSED
NAMCO TYPE EA-170

REFERENCE DWG:
M-02KA01
J-02KA02

- VALVE IS SHOWN IN FULL CLOSED POSITION. VALVE FAILS CLOSED
- CIS CONTACT OPENS ON CONTAINMENT ISOLATION SIGNAL PHASE A. SEE WESTINGHOUSE DWG. BECHTEL V.P. NO. W-767-181.
- FOR CABLE PULL TO STATUS PANEL SEE DWG. E-035A13.

NOTES:

REV	DATE	DESCRIPTION	BY	CHKD	APP'D
1	5/29/74	ADDED DEV. 33 MFR TYPE	WJ	WJ	WJ
2	5/29/74	REV'D CIS CONTACT TO INC. DCPS E-114C-W.	WJ	WJ	WJ
3	5/29/74	REV'D AS NOTED	WJ	WJ	WJ
4	5/29/74	ISSUED FOR CON'T.	WJ	WJ	WJ

SCALE: 1" = 100'

DESIGNED: DLG
DRAWN: CAD
CHECKED: EGM

BECHTEL
BALTHERSBURG, MARYLAND

SNPPS

SCHEMATIC DIAGRAM
COMPRESSED AIR CONTAINMENT ISO VLV

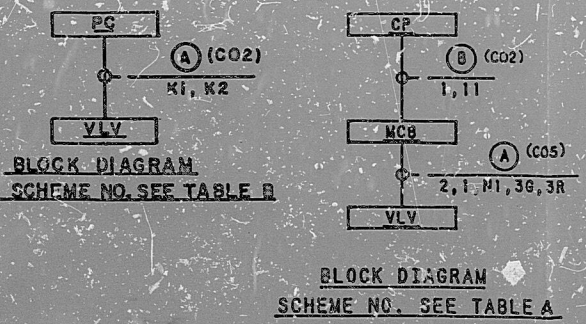
JOB NO.	BECHTEL DRAWING NO.	REV.
10488	E-03KA02 (0)	5

TABLE B

COMP. REF. DWG.	
BECHTEL V.P. NO.	N-108-018
COMPUTER POINT	MA229
PG LOC. - PG	RI189A
VLV. NO. - VLV	KAFV29
SCHEME NO.	1KAK02A

TABLE A

HIS NUMBER	KAH1329
HIS LOCATION-MCB	RL324
CONTROL PANEL-CP	38029C
VALVE NO.-VLV	KAFV29
SCHEME NO.	1KAK02A



TI
APERTURE
CARD

REVIEW LEVEL 3

I certify that the image contained on this frame was made in the normal and regular course of business, on the date stated below and that it is an accurate reproduction of the document(s) submitted to Micrographics.
DATE 5/29/74 OPERATOR Mike Thomas

8410040164

PDR RIDS

