

34

34

22

22

17

17

11

11

8.5

8.5

11

11

17

17

22

22

17

17

22

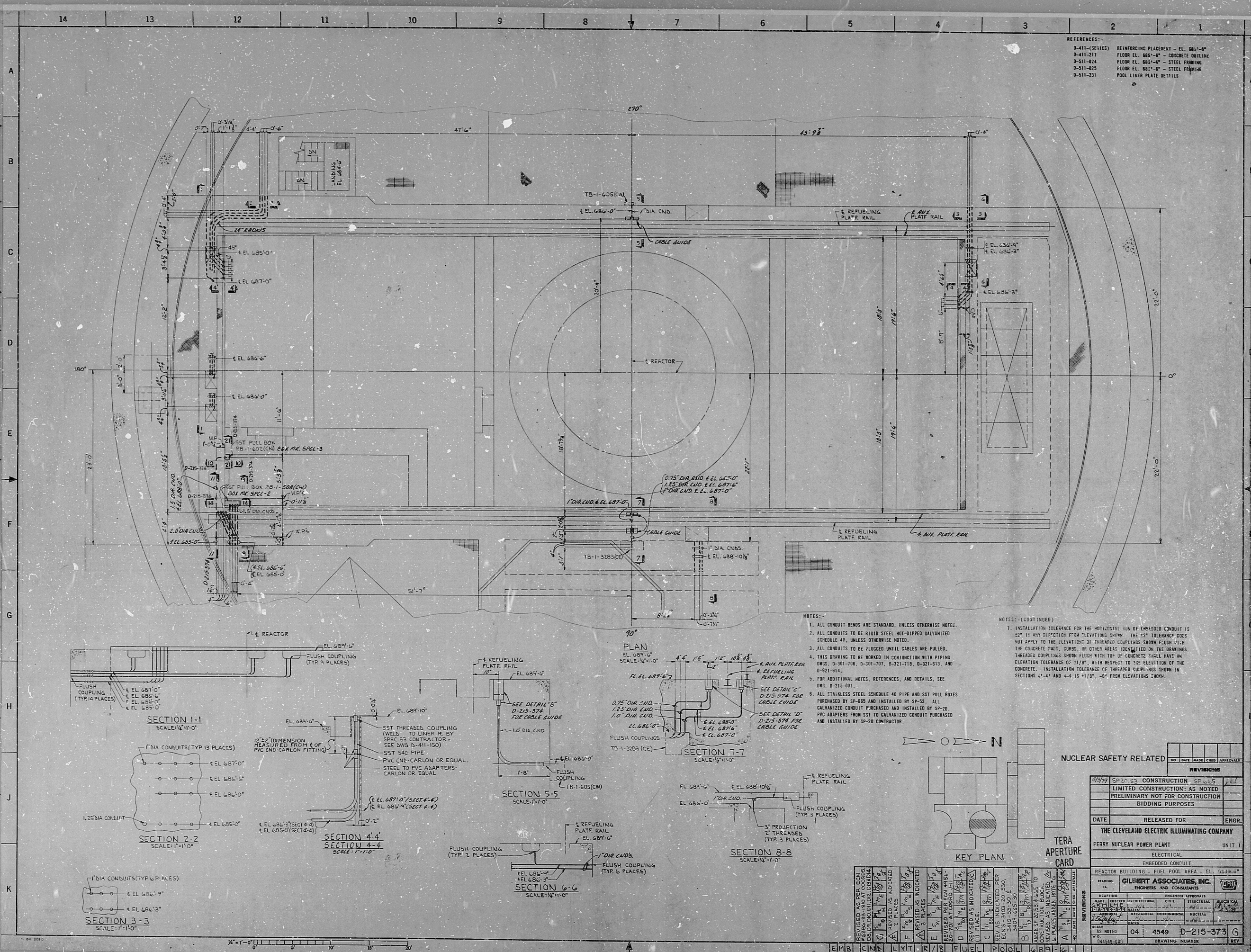
22

22

22

34

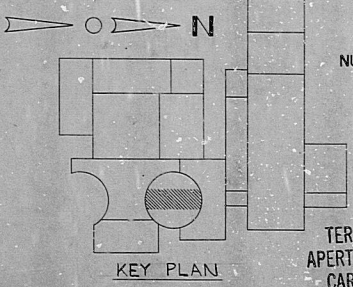
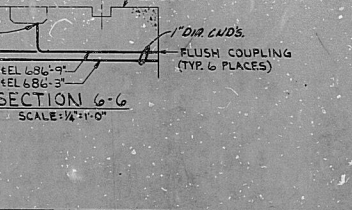
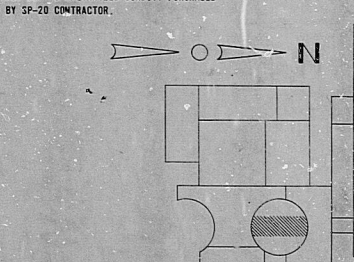
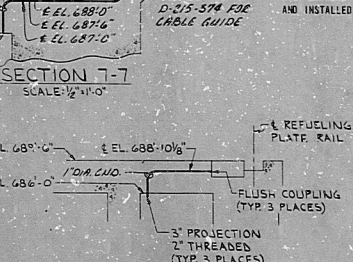
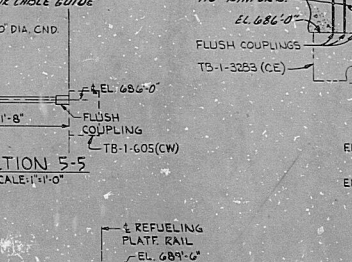
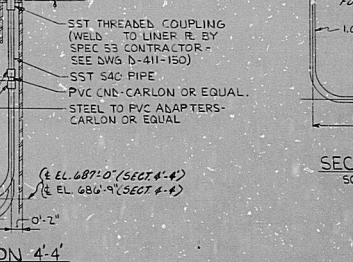
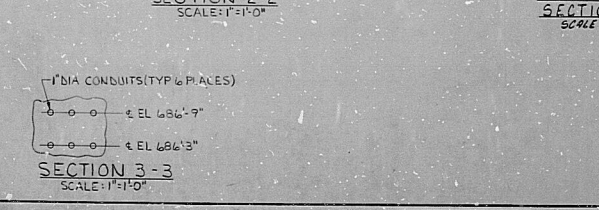
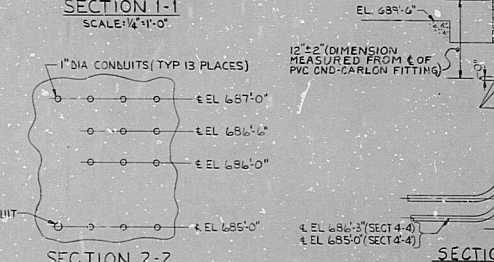
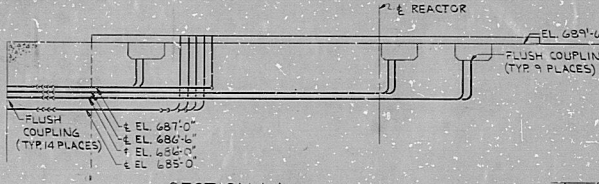
34



- REFERENCES:
- D-411 (SERIES) REINFORCING PLACEMENT - EL. 687'-0"
  - D-411-211 FLOOR EL. 684'-0" - CONCRETE OUTLINE
  - D-511-024 FLOOR EL. 683'-0" - STEEL FRAMING
  - D-511-025 FLOOR EL. 682'-0" - STEEL FRAMING
  - D-511-231 POOL LINER PLATE DETAILS

- NOTES:
- ALL CONDUIT BENDS ARE STANDARD, UNLESS OTHERWISE NOTED.
  - ALL CONDUITS TO BE RIGID STEEL HOT-DIPPED GALVANIZED SCHEDULE 40, UNLESS OTHERWISE NOTED.
  - ALL CONDUITS TO BE FLANGED UNTIL CABLES ARE PULLED.
  - THIS DRAWING TO BE WORKED IN CONJUNCTION WITH PIPING DWGS: D-211-706, D-211-707, D-211-710, D-211-613, AND D-921-614.
  - FOR ADDITIONAL NOTES, REFERENCES, AND DETAILS, SEE DWG. D-211-801.
  - ALL STAINLESS STEEL SCHEDULE 40 PIPE AND SST PULL BOXES PURCHASED BY SP-505 AND INSTALLED BY SP-53. ALL GALVANIZED CONDUIT PURCHASED AND INSTALLED BY SP-20. PVC ADAPTERS FROM SST TO GALVANIZED CONDUIT PURCHASED AND INSTALLED BY SP-20 CONTRACTOR.

- NOTES: (CONTINUED)
- INSTALLATION TOLERANCE FOR THE HORIZONTAL RUN OF EMBEDDED CONDUIT IS  $\pm 1/4"$  IN ANY DIRECTION FROM ELEVATIONS SHOWN. THE  $\pm 1/4"$  TOLERANCE DOES NOT APPLY TO THE ELEVATION OF THREADED COUPLINGS SHOWN FLUSH WITH THE CONCRETE PAD, CURBS, OR OTHER AREAS IDENTIFIED ON THE DRAWINGS. THREADED COUPLINGS SHOWN FLUSH WITH TOP OF CONCRETE SHALL HAVE AN ELEVATION TOLERANCE OF  $\pm 1/8"$  WITH RESPECT TO THE ELEVATION OF THE CONCRETE. INSTALLATION TOLERANCE OF THREADED COUPLINGS SHOWN IN SECTIONS 4-4 AND 4-4 IS  $\pm 1/8"$ ,  $\pm 5/16"$  FROM ELEVATIONS SHOWN.



NUCLEAR SAFETY RELATED

NO.	DATE	MADE	CHG.	APPROVAL

REVISIONS

NO.	DATE	DESCRIPTION

SP-20-53 CONSTRUCTION SP-605  
LIMITED CONSTRUCTION: AS NOTED  
PRELIMINARY NOT FOR CONSTRUCTION BIDDING PURPOSES

DATE RELEASED FOR ENGR.

THE CLEVELAND ELECTRIC ILLUMINATING COMPANY  
PERRY NUCLEAR POWER PLANT UNIT 1  
ELECTRICAL  
EMBEDDED CONDUIT

REACTOR BUILDING - FUEL POOL AREA - EL. 683'-0"

READING PA. GILBERT ASSOCIATES, INC. ENGINEERS AND CONSULTANTS

DRAWING APPROVALS

NAME	INDICED	ARCHITECTURAL	CIVIL	MECHANICAL	ELECTRICAL	INSTRUMENTATION	GENERAL

SCALE AS NOTED 04 4549 D-215-373 G  
W.D. 044549-331 DRAWING NUMBER REV

REVISIONS	NO.	DATE	DESCRIPTION

EMBS CKN LMT R/R 8 FUEL POOL 6 29 6



RIPS

8112030566

