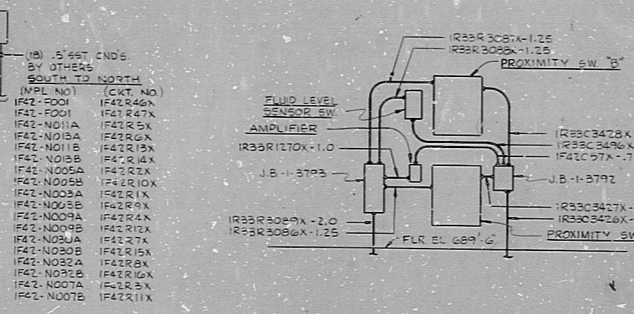
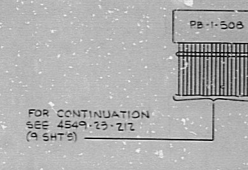
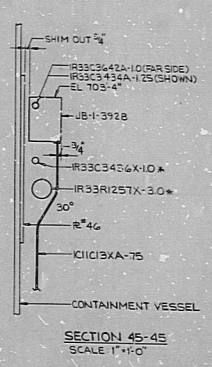
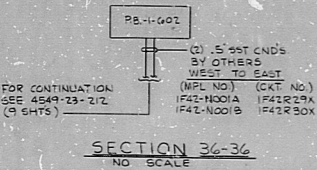


○ TYPICAL CONDUIT INSTALLATION  
 ○ FOR VALVE SOLENOID LIMIT SWITCHES  
 ○ OPEN LIMIT SW  
 ○ SOLENOID  
 ○ CONDUIT - 20' (UNLESS OTHERWISE NOTED ON CHART)

VALVE	BOX	SOLENOID NO.	LIM. SW. NO.
IMT-FOIO	185-118	IR33C342A-1.0	IR33C342A-1.0
IMT-FOIO	185-118	IR33C342A-1.0	IR33C342A-1.0
IMT-FOIO	185-118	IR33C342A-1.0	IR33C342A-1.0



- NOTES:
- FOR LEGEND, NOTES, REFERENCES, AND STANDARD DETAILS, SEE DWG. D-215-001.
  - CONDUITS CONTINUED DOWN, SEE DWG. D-215-361.
  - THIS DRAWING TO BE WORKED IN CONJUNCTION WITH THE FOLLOWING ELECTRICAL SUPPORT DRAWINGS:  
 SS-215-371, SHEET 031  
 SS-215-371, SHEET 034  
 SS-215-371, SHEET 035  
 SS-215-371, SHEET 036

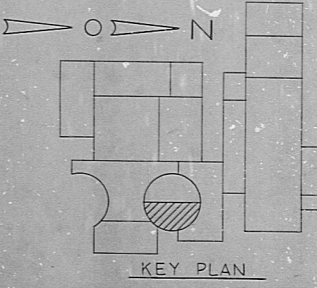
REVISIONS

NO.	DATE	DESCRIPTION	APPROVED
1		REVISED AS INDICATED	
2		REVISED AS INDICATED	
3		REVISED AS INDICATED	

NUCLEAR SAFETY RELATED

TERA APERTURE CARD

DATE	RELEASED FOR	ENGR.
THE CLEVELAND ELECTRIC ILLUMINATING COMPANY		
PERRY NUCLEAR POWER PLANT UNIT 1		
ELECTRICAL CONDUIT LAYOUT		
REACTOR BUILDING - EAST - EL 689-6"		
DRAWING NO.	04 4549	D-215-371
SCALE	1/8"=1'-0"	
DRAWING NUMBER		REV.



14 13 12 11 10 9 8 7 6 5 4 3 2 1

A B C D E F G H J K

8.5" 11" 17" 22" 34"

RIDS

8/2030562

