

This drawing and the design it covers is the property of the utilities which are participating in the SNUPPS Project. It is loaned to the borrower's express agreement that it will not be reproduced, copied, loaned, exhibited, or used except in the limited way and private use permitted by written consent given by the SNUPPS utilities to the borrower.

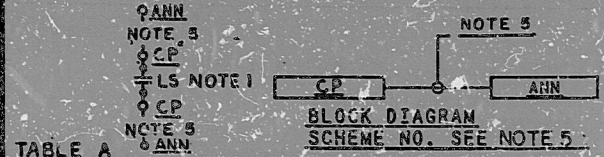
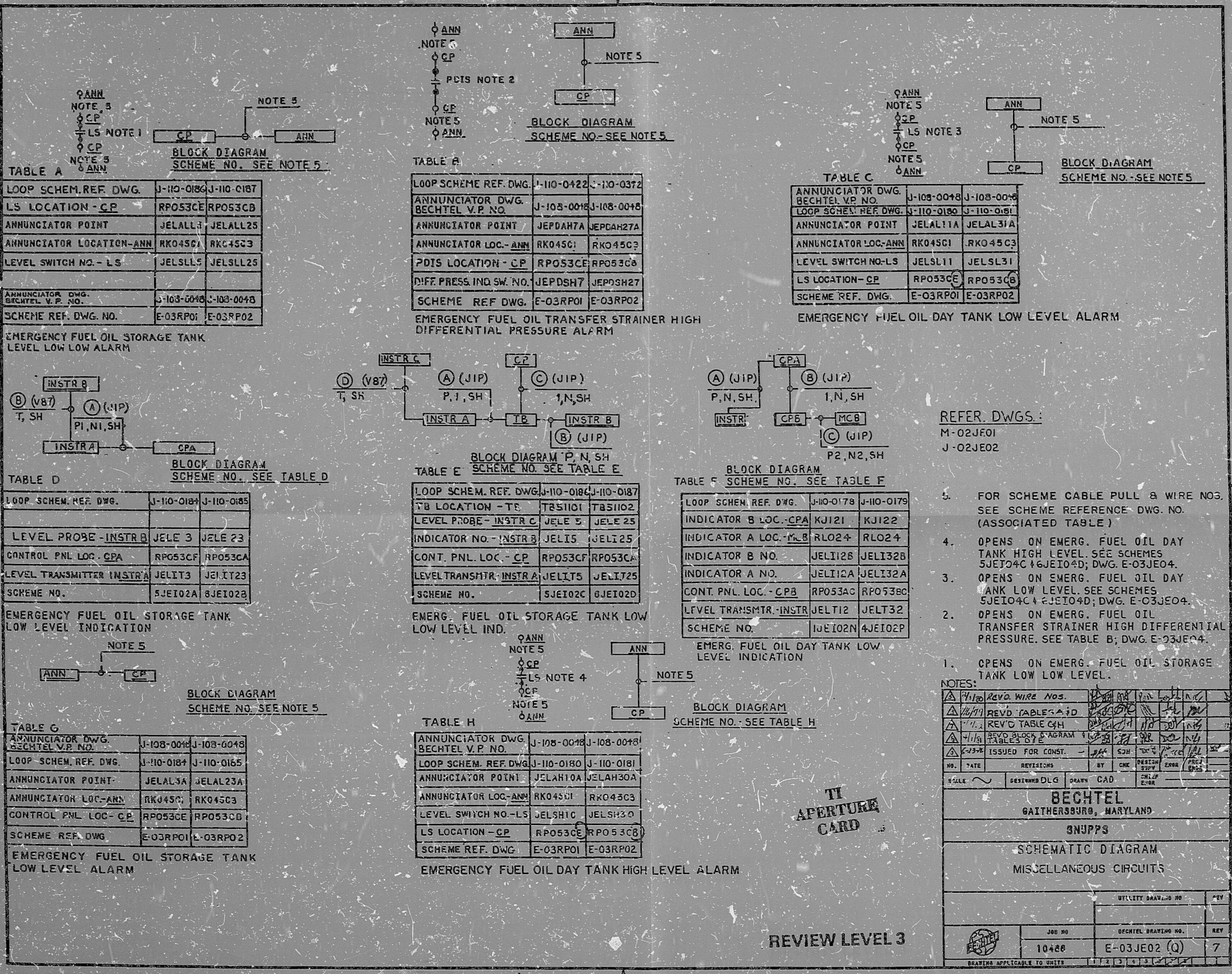


TABLE A

LOOP SCHEM. REF. DWG.	J-110-0184	J-110-0187
LS LOCATION - CP	RPO53CE	RPO53CB
ANNUNCIATOR POINT	JELALL1	JELALL25
ANNUNCIATOR LOC. - ANN	RK045C1	RK045C3
LEVEL SWITCH NO. - LS	JELSLL1	JELSLL25
ANNUNCIATOR DWG. BECHTEL V.P. NO.	J-103-0048	J-103-0048
SCHEME REF. DWG. NO.	E-03RPO1	E-03RPO2

EMERGENCY FUEL OIL STORAGE TANK LOW LEVEL ALARM

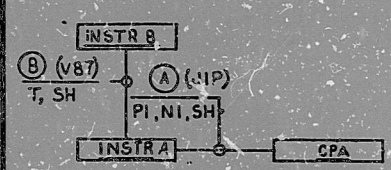


TABLE D

LOOP SCHEM. REF. DWG.	J-110-0184	J-110-0185
LEVEL PROBE - INSTR B	JELE 3	JELE 23
CONTROL PNL LOC. - CPA	RPO53CF	RPO53CA
LEVEL TRANSMITTER INSTR A	JELIT3	JELIT23
SCHEME NO.	5JEI02A	8JEI02B

EMERGENCY FUEL OIL STORAGE TANK LOW LEVEL INDICATION

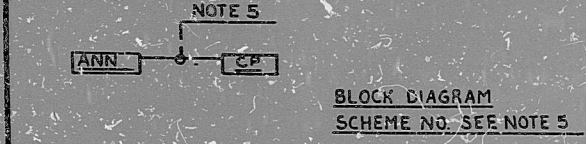


TABLE G

ANNUNCIATOR DWG. BECHTEL V.P. NO.	J-103-0048	J-103-0048
LOOP SCHEM. REF. DWG.	J-110-0184	J-110-0185
ANNUNCIATOR POINT	JELAL3A	JELAL23A
ANNUNCIATOR LOC. - ANN	RK045C1	RK045C3
CONTROL PNL LOC. - CP	RPO53CE	RPO53CB
SCHEME REF. DWG.	E-03RPO1	E-03RPO2

EMERGENCY FUEL OIL STORAGE TANK LOW LEVEL ALARM

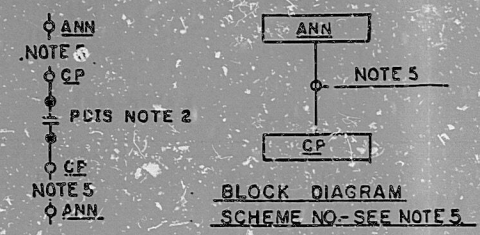


TABLE B

LOOP SCHEM. REF. DWG.	J-110-0422	J-110-0372
ANNUNCIATOR DWG. BECHTEL V.P. NO.	J-103-0048	J-103-0048
ANNUNCIATOR POINT	JEPDAH7A	JEPDAH27A
ANNUNCIATOR LOC. - ANN	RK045C1	RK045C3
PCIS LOCATION - CP	RPO53CE	RPO53CB
DIFF. PRESS. IND. SW. NO.	JEPDSH7	JEPDSH27
SCHEME REF. DWG.	E-03RPO1	E-03RPO2

EMERGENCY FUEL OIL TRANSFER STRAINER HIGH DIFFERENTIAL PRESSURE ALARM

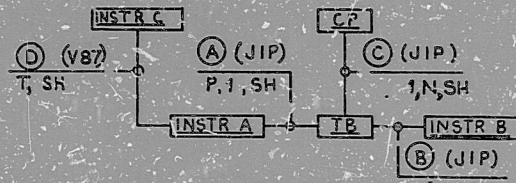


TABLE E

LOOP SCHEM. REF. DWG.	J-110-0184	J-110-0187
TS LOCATION - TS	T851101	T851102
LEVEL PROBE - INSTR C	JELE 5	JELE 25
INDICATOR NO. - INSTR B	JELI5	JELI25
CONT. PNL. LOC. - CP	RPO53CF	RPO53CA
LEVEL TRANSMTR. INSTR A	JELIT5	JELIT25
SCHEME NO.	5JEI02C	8JEI02D

EMERG. FUEL OIL STORAGE TANK LOW LEVEL IND.

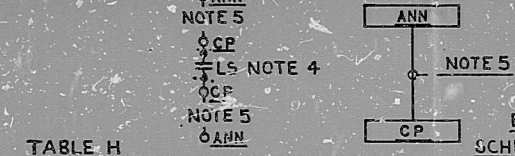


TABLE H

ANNUNCIATOR DWG. BECHTEL V.P. NO.	J-103-0048	J-103-0048
LOOP SCHEM. REF. DWG.	J-110-0180	J-110-0181
ANNUNCIATOR POINT	JELAH10A	JELAH30A
ANNUNCIATOR LOC. - ANN	RK045C1	RK045C3
LEVEL SWITCH NO. - LS	JELSH1C	JELSH3C
LS LOCATION - CP	RPO53CE	RPO53CB
SCHEME REF. DWG.	E-03RPO1	E-03RPO2

EMERGENCY FUEL OIL DAY TANK HIGH LEVEL ALARM

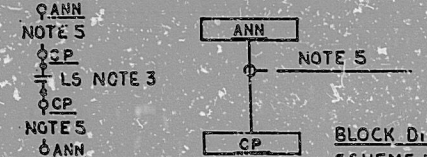


TABLE C

ANNUNCIATOR DWG. BECHTEL V.P. NO.	J-103-0048	J-103-0048
LOOP SCHEM. REF. DWG.	J-110-0180	J-110-0181
ANNUNCIATOR POINT	JELAL11A	JELAL31A
ANNUNCIATOR LOC. - ANN	RK045C1	RK045C3
LEVEL SWITCH NO. - LS	JELS11	JELS131
LS LOCATION - CP	RPO53CE	RPO53CB
SCHEME REF. DWG.	E-03RPO1	E-03RPO2

EMERGENCY FUEL OIL DAY TANK LOW LEVEL ALARM

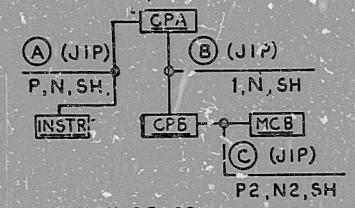


TABLE F

LOOP SCHEM. REF. DWG.	J-110-0178	J-110-0179
INDICATOR B LOC. - CPA	KJ121	KJ122
INDICATOR A LOC. - CPB	RLO24	RLO24
INDICATOR B NO.	JELI12B	JELI32B
INDICATOR A NO.	JELI12A	JELI32A
CONT. PNL. LOC. - CPB	RPO53AC	RPO53BC
LEVEL TRANSMTR. INSTR	JELT12	JELT32
SCHEME NO.	10E102N	4JEI02P

EMERG. FUEL OIL DAY TANK LOW LEVEL INDICATION

REFER. DWGS.:

M-02JE01

J-02JE02

- OPENS ON EMERG. FUEL OIL STORAGE TANK LOW LEVEL.
- OPENS ON EMERG. FUEL OIL TRANSFER STRAINER HIGH DIFFERENTIAL PRESSURE. SEE TABLE B; DWG. E-03JE04.
- OPENS ON EMERG. FUEL OIL DAY TANK LOW LEVEL. SEE SCHEMES 5JEI04C & 8JEI04D; DWG. E-03JE04.
- OPENS ON EMERG. FUEL OIL DAY TANK HIGH LEVEL. SEE SCHEMES 5JEI04C & 8JEI04D; DWG. E-03JE04.
- FOR SCHEME CABLE PULL & WIRE NOS. SEE SCHEME REFERENCE DWG. NO. (ASSOCIATED TABLE)

NOTES:

NO.	DATE	REVISIONS	BY	CHK	DESIGN	DRWG	APP'D
1							
2							
3							
4							
5							

TI APERTURE CARD

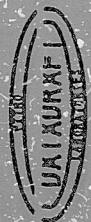
REVIEW LEVEL 3

BECHTEL
GAITHERSBURG, MARYLAND
SNUPPS

SCHEMATIC DIAGRAM
MISCELLANEOUS CIRCUITS

UTILITY DRAWING NO.	REV.
JOB NO.	BECHTEL DRAWING NO.
10480	E-03JE02 (Q)
DATE	REV.
	7

SEARCHING APPLICABLE TO UNITS



I certify that the image contained on this frame was made in the normal and regular course of business, on the date stated below and that it is an accurate reproduction of the document(s) submitted to Micrographics.
DATE 4-14-82 OPERATOR *Scott Kimmey* SUPERVISOR *[Signature]*

8410040148

PDR RIDS

