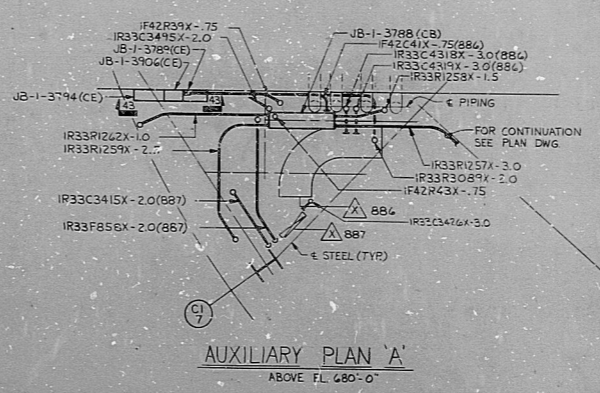
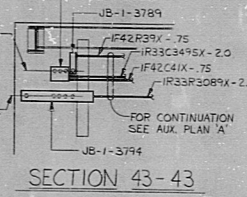


○ TYPICAL CONDUIT INSTALLATION FOR VALVE SOLENOID & LIMIT SWITCHES
 ○ OPEN LIM SW
 ○ SOLENOID
 ○ CONDUIT - 75(LIM SW) OTHERWISE NOTED ON CHART

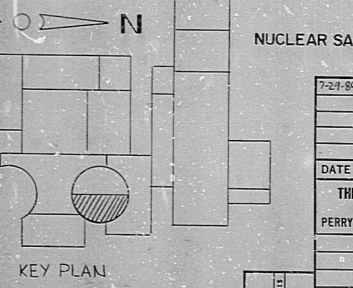
VALVE MPL NO	BOX NO.	SOLENOID NO.	LIM SW NO.
1936-F001A	1B-1-3505	1936-F401A	1936-F001A
1936-F001A	1B-1-3504	1936-F402A	1936-F002A
1936-F001A	1B-1-3503	1936-F403A	1936-F003A
1936-F001A	1B-1-3502	1936-F404A	1936-F004A
1936-F001A	1B-1-3501	1936-F405A	1936-F005A
1936-F001A	1B-1-3500	1936-F406A	1936-F006A
1936-F001A	1B-1-3499	1936-F407A	1936-F007A
1936-F001A	1B-1-3498	1936-F408A	1936-F008A
1936-F001A	1B-1-3497	1936-F409A	1936-F009A
1936-F001A	1B-1-3496	1936-F410A	1936-F010A
1936-F001A	1B-1-3495	1936-F411A	1936-F011A
1936-F001A	1B-1-3494	1936-F412A	1936-F012A
1936-F001A	1B-1-3493	1936-F413A	1936-F013A
1936-F001A	1B-1-3492	1936-F414A	1936-F014A
1936-F001A	1B-1-3491	1936-F415A	1936-F015A
1936-F001A	1B-1-3490	1936-F416A	1936-F016A
1936-F001A	1B-1-3489	1936-F417A	1936-F017A
1936-F001A	1B-1-3488	1936-F418A	1936-F018A
1936-F001A	1B-1-3487	1936-F419A	1936-F019A
1936-F001A	1B-1-3486	1936-F420A	1936-F020A
1936-F001A	1B-1-3485	1936-F421A	1936-F021A
1936-F001A	1B-1-3484	1936-F422A	1936-F022A
1936-F001A	1B-1-3483	1936-F423A	1936-F023A
1936-F001A	1B-1-3482	1936-F424A	1936-F024A
1936-F001A	1B-1-3481	1936-F425A	1936-F025A
1936-F001A	1B-1-3480	1936-F426A	1936-F026A
1936-F001A	1B-1-3479	1936-F427A	1936-F027A
1936-F001A	1B-1-3478	1936-F428A	1936-F028A
1936-F001A	1B-1-3477	1936-F429A	1936-F029A
1936-F001A	1B-1-3476	1936-F430A	1936-F030A

VALVE MPL NO	BOX NO.	SOLENOID NO.	LIM SW NO.
1936-F001B	1B-1-3507	1936-F401B	1936-F001B
1936-F001B	1B-1-3506	1936-F402B	1936-F002B
1936-F001B	1B-1-3505	1936-F403B	1936-F003B
1936-F001B	1B-1-3504	1936-F404B	1936-F004B
1936-F001B	1B-1-3503	1936-F405B	1936-F005B
1936-F001B	1B-1-3502	1936-F406B	1936-F006B
1936-F001B	1B-1-3501	1936-F407B	1936-F007B
1936-F001B	1B-1-3500	1936-F408B	1936-F008B
1936-F001B	1B-1-3499	1936-F409B	1936-F009B
1936-F001B	1B-1-3498	1936-F410B	1936-F010B
1936-F001B	1B-1-3497	1936-F411B	1936-F011B
1936-F001B	1B-1-3496	1936-F412B	1936-F012B
1936-F001B	1B-1-3495	1936-F413B	1936-F013B
1936-F001B	1B-1-3494	1936-F414B	1936-F014B
1936-F001B	1B-1-3493	1936-F415B	1936-F015B
1936-F001B	1B-1-3492	1936-F416B	1936-F016B
1936-F001B	1B-1-3491	1936-F417B	1936-F017B
1936-F001B	1B-1-3490	1936-F418B	1936-F018B
1936-F001B	1B-1-3489	1936-F419B	1936-F019B
1936-F001B	1B-1-3488	1936-F420B	1936-F020B
1936-F001B	1B-1-3487	1936-F421B	1936-F021B
1936-F001B	1B-1-3486	1936-F422B	1936-F022B
1936-F001B	1B-1-3485	1936-F423B	1936-F023B
1936-F001B	1B-1-3484	1936-F424B	1936-F024B
1936-F001B	1B-1-3483	1936-F425B	1936-F025B
1936-F001B	1B-1-3482	1936-F426B	1936-F026B
1936-F001B	1B-1-3481	1936-F427B	1936-F027B
1936-F001B	1B-1-3480	1936-F428B	1936-F028B
1936-F001B	1B-1-3479	1936-F429B	1936-F029B
1936-F001B	1B-1-3478	1936-F430B	1936-F030B

NOTES:-
 1. FOR LEGEND, NOTES, REFERENCES, AND STANDARD DETAILS, SEE DWG. D-215-001.
 2. CONDUITS CONTINUED UP, SEE DWG. D-215-371.
 CONDUITS CONTINUED DOWN, SEE DWG. D-215-351.



POOR ORIGINAL



REVISION	DATE	BY	DESCRIPTION
1			REVISED AS INDICATED
2			2 PLACES
3			REVISED AS INDICATED
4			3 PLACES
5			REVISED AS INDICATED
6			2 PLACES
7			REVISED AS INDICATED
8			16 PLACES
9			REVISED AS INDICATED
10			16 PLACES

NUCLEAR SAFETY RELATED
 LIMITED CONSTRUCTION: AS NOTED
 PRELIMINARY NOT FOR CONSTRUCTION BIDDING PURPOSES
 DATE: _____ RELEASED FOR: _____ ENGR: _____
 THE CLEVELAND ELECTRIC ILLUMINATING COMPANY
 PERRY NUCLEAR POWER PLANT UNIT 1
 ELECTRICAL CONDUIT LAYOUT
 REACTOR BUILDING - EAST - EL. 664'-7"
 GILBERT ASSOCIATES, INC.
 ENGINEERS AND CONSULTANTS
 DRAFTING: _____ ARCHITECTURAL: _____ CIVIL: _____ ELECTRICAL: _____
 MECHANICAL: _____ ENVIRONMENTAL: _____ NUCLEAR: _____
 DATE: 7/26/64
 04 4549 D-215-361 D
 6449-000 DRAWING NUMBER

COND LYT R/B EAST EL 664-7

RIDS

8112030586

