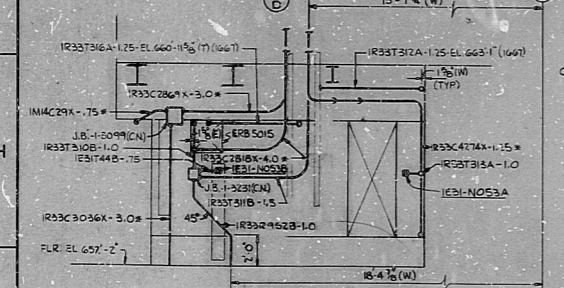
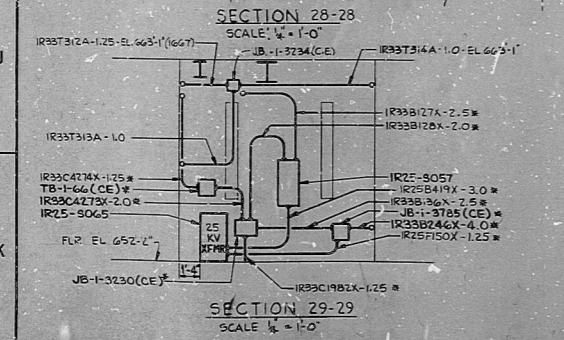


NOTES:  
 1. FOR LEGEND, NOTES, REFERENCES, AND STANDARD DETAILS, SEE DWG. D-215-001.  
 2. CONDUITS CONTINUED UP, SEE DWG. D-215-361. CONDUITS CONTINUED DOWN, SEE DWG. D-215-341.

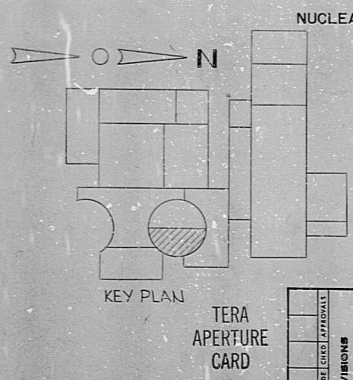


○ TYPICAL CONDUIT INSTALLATION FOR VALVE SOLENOID & LIMIT SWITCHES.  
 CLOSED LIM SW  
 OPEN LIM SW  
 SOLENOID CONDUIT - 75% (UNLESS OTHERWISE NOTED ON CHART)

VALVE MFL NO.	BOX NO.	SOLENOID NO.	CND. NO.	CON. NO. (OPEN)	CND. NO. (CLOSED)
1636-FO0A	J3-1214	1636-FA09A	1636-FA09A	1636-FO09A	1636-FO09A
1636-FO0B	J3-1215	1636-FA09B	1636-FA09B	1636-FO09B	1636-FO09B
1636-FO0C	J3-1216	1636-FA09C	1636-FA09C	1636-FO09C	1636-FO09C
1636-FO0D	J3-1217	1636-FA09D	1636-FA09D	1636-FO09D	1636-FO09D
1636-FO0E	J3-1218	1636-FA09E	1636-FA09E	1636-FO09E	1636-FO09E
1636-FO0F	J3-1219	1636-FA09F	1636-FA09F	1636-FO09F	1636-FO09F
1636-FO0G	J3-1220	1636-FA09G	1636-FA09G	1636-FO09G	1636-FO09G
1636-FO0H	J3-1221	1636-FA09H	1636-FA09H	1636-FO09H	1636-FO09H
1636-FO0I	J3-1222	1636-FA09I	1636-FA09I	1636-FO09I	1636-FO09I
1636-FO0J	J3-1223	1636-FA09J	1636-FA09J	1636-FO09J	1636-FO09J
1636-FO0K	J3-1224	1636-FA09K	1636-FA09K	1636-FO09K	1636-FO09K
1636-FO0L	J3-1225	1636-FA09L	1636-FA09L	1636-FO09L	1636-FO09L
1636-FO0M	J3-1226	1636-FA09M	1636-FA09M	1636-FO09M	1636-FO09M
1636-FO0N	J3-1227	1636-FA09N	1636-FA09N	1636-FO09N	1636-FO09N
1636-FO0O	J3-1228	1636-FA09O	1636-FA09O	1636-FO09O	1636-FO09O
1636-FO0P	J3-1229	1636-FA09P	1636-FA09P	1636-FO09P	1636-FO09P
1636-FO0Q	J3-1230	1636-FA09Q	1636-FA09Q	1636-FO09Q	1636-FO09Q
1636-FO0R	J3-1231	1636-FA09R	1636-FA09R	1636-FO09R	1636-FO09R
1636-FO0S	J3-1232	1636-FA09S	1636-FA09S	1636-FO09S	1636-FO09S
1636-FO0T	J3-1233	1636-FA09T	1636-FA09T	1636-FO09T	1636-FO09T
1636-FO0U	J3-1234	1636-FA09U	1636-FA09U	1636-FO09U	1636-FO09U
1636-FO0V	J3-1235	1636-FA09V	1636-FA09V	1636-FO09V	1636-FO09V
1636-FO0W	J3-1236	1636-FA09W	1636-FA09W	1636-FO09W	1636-FO09W
1636-FO0X	J3-1237	1636-FA09X	1636-FA09X	1636-FO09X	1636-FO09X
1636-FO0Y	J3-1238	1636-FA09Y	1636-FA09Y	1636-FO09Y	1636-FO09Y
1636-FO0Z	J3-1239	1636-FA09Z	1636-FA09Z	1636-FO09Z	1636-FO09Z



**POOR ORIGINAL**



NUCLEAR SAFETY RELATED  
 CONSTRUCTION SP-22  
 LIMITED CONSTRUCTION AS NOTED  
 PRELIMINARY NOT FOR CONSTRUCTION BIDDING PURPOSES  
 DATE RELEASED FOR ENGR  
 THE CLEVELAND ELECTRIC ILLUMINATING COMPANY  
 PERRY NUCLEAR POWER PLANT UNIT 1  
 ELECTRICAL  
 CONDUIT LAYOUT  
 REACTOR BUILDING - EAST - EL. 652'-2"

REVISION	DATE	BY	DESCRIPTION
1	1/18/64	JMS	ISSUED FOR CONSTRUCTION
2	2/10/64	JMS	REVISED AS NOTED
3	3/10/64	JMS	REVISED AS NOTED
4	4/10/64	JMS	REVISED AS NOTED
5	5/10/64	JMS	REVISED AS NOTED
6	6/10/64	JMS	REVISED AS NOTED
7	7/10/64	JMS	REVISED AS NOTED
8	8/10/64	JMS	REVISED AS NOTED
9	9/10/64	JMS	REVISED AS NOTED
10	10/10/64	JMS	REVISED AS NOTED
11	11/10/64	JMS	REVISED AS NOTED
12	12/10/64	JMS	REVISED AS NOTED

CONDUIT LAYOUT  
 14 13 12 11 10 9 8 7 6 5 4 3 2 1  
 A B C D E F G H J K  
 178" x 11-0" 04 4549 D-215-351 E  
 84549-000 DRAWING NUMBER REV

RIDS

812030438

