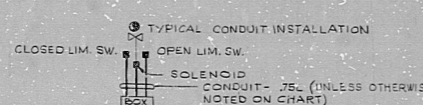
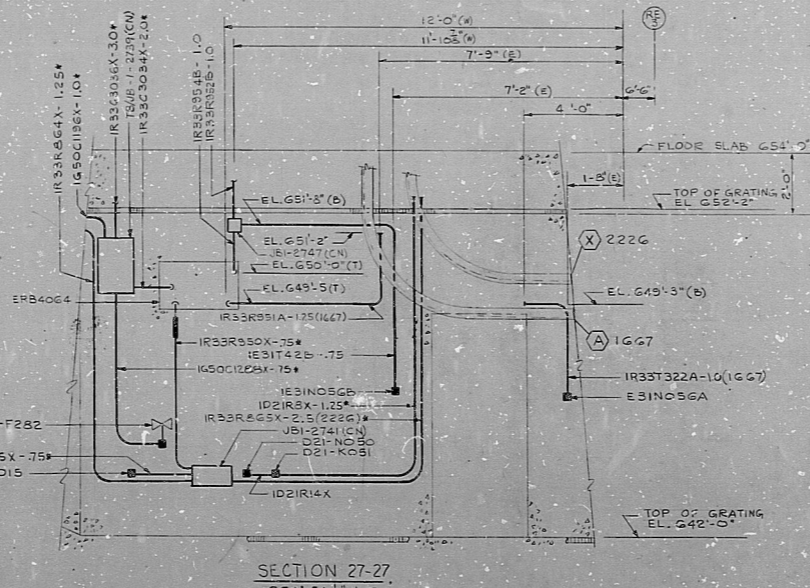


- NOTES:
1. FOR LEGEND, NOTES, REFERENCES, AND STANDARD DETAILS, SEE DWG. D-215-001.
 2. CONDUITS CONTINUED DOWN, SEE DWG. D-215-331.
 3. CONDUITS CONTINUED UP, SEE DWG. D-215-351.



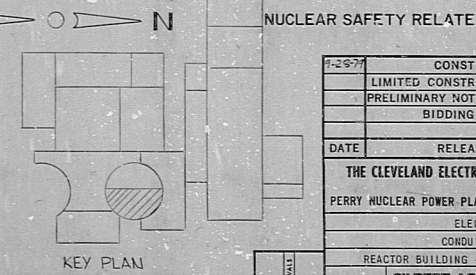
TYPICAL CONDUIT INSTALLATION

VALVE MPL NO.	SOLENOID NO.	CONDUIT NO.	LIMIT SW. NO.
G50-F278	IE12-F305A	IE12-F305B	IE12-F305C
G50-F275	IE12-F302X	IE12-F302Y	IE12-F302Z
G50-F276	IE12-F302X	IE12-F302Y	IE12-F302Z
G50-F277	IE12-F302X	IE12-F302Y	IE12-F302Z
G50-F279	IE12-F302X	IE12-F302Y	IE12-F302Z
G50-F280	IE12-F302X	IE12-F302Y	IE12-F302Z
G50-F281	IE12-F302X	IE12-F302Y	IE12-F302Z
G50-F282	IE12-F302X	IE12-F302Y	IE12-F302Z
G50-F283	IE12-F302X	IE12-F302Y	IE12-F302Z
G50-F284	IE12-F302X	IE12-F302Y	IE12-F302Z
G50-F285	IE12-F302X	IE12-F302Y	IE12-F302Z



SECTION 27-27 SCALE: 1/4" = 1'-0"

POOR ORIGINAL



REVISED AS INDICATED AT PLACE, ALSO AS REV. 10/26/54, 25-1310 AT COORDS. A14, B15, B14.

D	10/26/54	10/26/54
C	10/26/54	10/26/54
B	10/26/54	10/26/54
A	10/26/54	10/26/54

REVISIONS

NO.	DATE	BY	REVISION
1	11/11/54
2

CONSTRUCTION 3/2/55

LIMITED CONSTRUCTION: AS NOTED PRELIMINARY NOT FOR CONSTRUCTION BIDDING PURPOSES

RELEASED FOR ENGR.

THE CLEVELAND ELECTRIC ILLUMINATING COMPANY

PERRY NUCLEAR POWER PLANT UNIT 1

ELECTRICAL CONDUIT LAYOUT

REACTOR BUILDING - EAST - EL. 642'-0"

GILBERT ASSOCIATES, INC. ENGINEERS AND CONSULTANTS

DATE: 04 4549 D-215-341

DRAWING NUMBER: 04543-000

C O M D L Y T R V B E A S T E L . 6 4 2 ' 0 "

RIDS

8112030434

