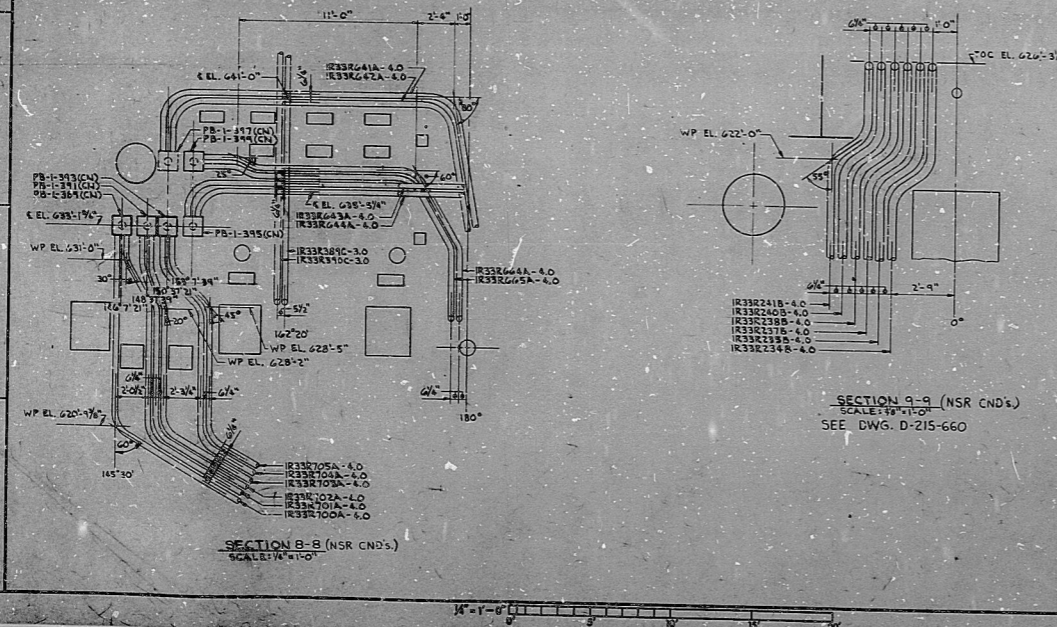
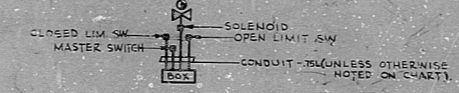


CHART A
WEST TO EAST
IP54B2A-75
IP54B2A-125
IP54B2A-10

CHART B
WEST TO EAST
IP54B2A-15 (22)
IP282A-75

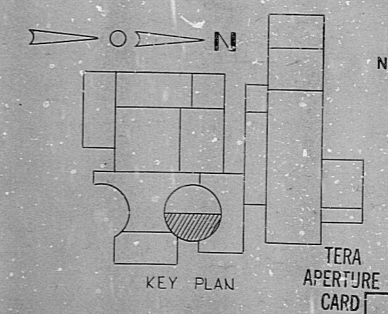
- NOTES:
- FOR LEGEND, NOTES, REFERENCES, AND STANDARD DETAILS, SEE DWG. D-215-001.
 - CONDUITS CONTINUED UP, SEE DWG. D-215-341.
 - CONDUITS CONTINUED DOWN, SEE DWG. D-215-321.
- THIS DRAWING TO BE WORKED IN CONJUNCTION WITH THE FOLLOWING CONDUIT SUPPORT DRAWINGS:
- SS-215-331, SHEET C7
 - SS-215-331, SHEET C8
 - SS-215-331, SHEET C11
 - SS-215-331, SHEET D12
 - SS-215-331, SHEET D18
 - SS-215-331, SHEET D19

TYPICAL CONDUIT INSTALLATION FOR VALVE SOLENOID & LIMIT SWITCHES.



VALVE WP. L. NO.	BOX NO.	SOLENOID NO.	LIMIT SWITCH NO.	MASTER SW. NO.
CND. NR. (OPEN)	CND. NR. (CLOSED)	CND. NR.	CND. NR.	CND. NR.
IE12-F039A	IE12-F039B	IE12-F039C	IE12-F039D	IE12-F039E
IE12-F041A	IE12-F041B	IE12-F041C	IE12-F041D	IE12-F041E
IE12-F039C	IE12-F039D	IE12-F039E	IE12-F039F	IE12-F039G
IE12-F041C	IE12-F041D	IE12-F041E	IE12-F041F	IE12-F041G
IE12-F041D	IE12-F041E	IE12-F041F	IE12-F041G	IE12-F041H
IE12-F041E	IE12-F041F	IE12-F041G	IE12-F041H	IE12-F041I
IE12-F041F	IE12-F041G	IE12-F041H	IE12-F041I	IE12-F041J
IE12-F041G	IE12-F041H	IE12-F041I	IE12-F041J	IE12-F041K
IE12-F041H	IE12-F041I	IE12-F041J	IE12-F041K	IE12-F041L
IE12-F041I	IE12-F041J	IE12-F041K	IE12-F041L	IE12-F041M
IE12-F041J	IE12-F041K	IE12-F041L	IE12-F041M	IE12-F041N
IE12-F041K	IE12-F041L	IE12-F041M	IE12-F041N	IE12-F041O
IE12-F041L	IE12-F041M	IE12-F041N	IE12-F041O	IE12-F041P
IE12-F041M	IE12-F041N	IE12-F041O	IE12-F041P	IE12-F041Q
IE12-F041N	IE12-F041O	IE12-F041P	IE12-F041Q	IE12-F041R
IE12-F041O	IE12-F041P	IE12-F041Q	IE12-F041R	IE12-F041S
IE12-F041P	IE12-F041Q	IE12-F041R	IE12-F041S	IE12-F041T
IE12-F041Q	IE12-F041R	IE12-F041S	IE12-F041T	IE12-F041U
IE12-F041R	IE12-F041S	IE12-F041T	IE12-F041U	IE12-F041V
IE12-F041S	IE12-F041T	IE12-F041U	IE12-F041V	IE12-F041W
IE12-F041T	IE12-F041U	IE12-F041V	IE12-F041W	IE12-F041X
IE12-F041U	IE12-F041V	IE12-F041W	IE12-F041X	IE12-F041Y
IE12-F041V	IE12-F041W	IE12-F041X	IE12-F041Y	IE12-F041Z
IE12-F041W	IE12-F041X	IE12-F041Y	IE12-F041Z	
IE12-F041X	IE12-F041Y	IE12-F041Z		
IE12-F041Y	IE12-F041Z			
IE12-F041Z				

POOR ORIGINAL



NUCLEAR SAFETY RELATED

REVISIONS

NO.	DATE	BY	DESCRIPTION
1			

CONSTRUCTION 5/93

LIMITED CONSTRUCTION: AS NOTED

PRELIMINARY NOT FOR CONSTRUCTION BIDDING PURPOSES

DATE RELEASED FOR ENGR.

THE CLEVELAND ELECTRIC ILLUMINATING COMPANY

PERRY NUCLEAR POWER PLANT UNIT 1

ELECTRICAL CONDUIT LAYOUT

REACTOR BUILDING - EAST - EL. 620'-0"

GILBERT ASSOCIATES, INC. ENGINEERS AND CONSULTANTS

DATE: 04 4549 D-215-331

DRAWING NUMBER: 04549-005

CND L Y F R / R EAST EL 620'-0"

RIDS

8112030429

